



17 Pretoria Road  
Canterbury CT1 1QL  
£1,500 PCM





# 17 Pretoria Road, Canterbury, CT1 1QL

A four bedroom student house located close to CCU. The accommodation offers a versatile space that would suit a group of students or a family tenancy.

For students, there are four bedrooms, the landlord would look to offer the tenancy until 30th June 2026 and there is an option for a bills package which we are able to discuss prices for you.

For a family, the property would serve itself well as a three bedroom home with two reception rooms downstairs. The property has a ground floor WC and upstairs family bathroom.

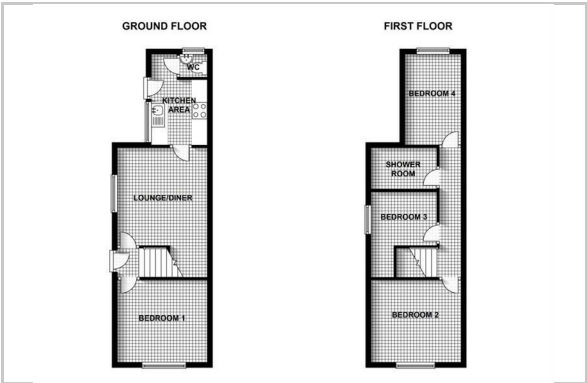
Note: 12 Months. Council Tax Band C. Deposit for a family £1,730.76.



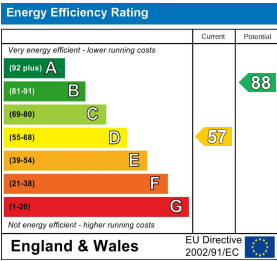
## Area Map



## Floor Plan



## Energy Efficiency Graph



These particulars, whilst believed to be accurate are set out as a general outline only for guidance and do not constitute any part of an offer or contract. Intending purchasers should not rely on them as statements of representation of fact, but must satisfy themselves by inspection or otherwise as to their accuracy. No person in this firms employment has the authority to make or give any representation or warranty in respect of the property.