



Jubilee Court
Wincheap Canterbury CT1 3FJ
£925 PCM- Council Tax Band B



Jubilee Court, Wincheap, Canterbury, CT1 3FJ

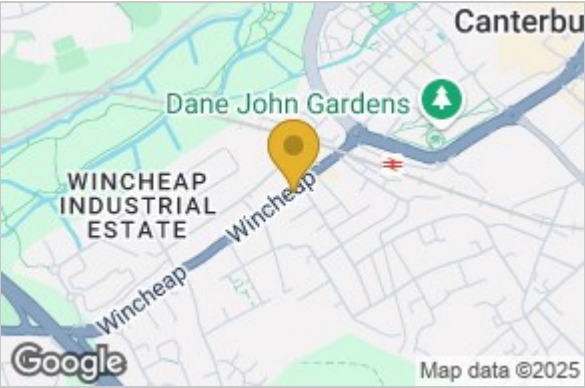
A one double bedroom first floor apartment with open plan living space located just a few hundred yards from the City Walls. An open plan lounge/ dining room with a juliet balcony window overlooking Wincheap High Street. The kitchen area contains a range of high gloss fitted units including stainless steel sink unit, base and wall cupboards, split level cooker and hob unit, extractor fan, washing machine/dryer and fridge/freezer. A fully tiled luxury shower room offers chrome centrally heated towel rail, wash hand basin and low dual flush WC. Carpeted double bedroom.

One parking space can be provided for £50.00 PCM.

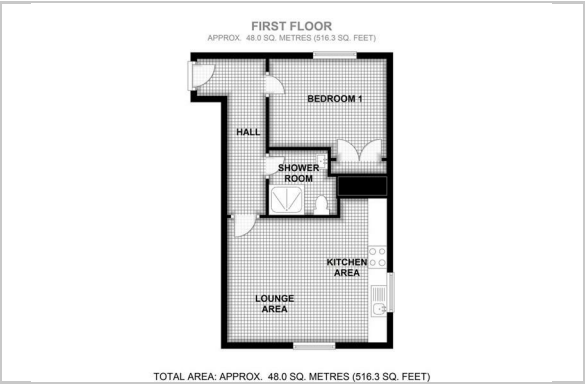
NOTE: Unfurnished. 12 Months Minimum. Council Tax Band B. Guarantors must be provided.



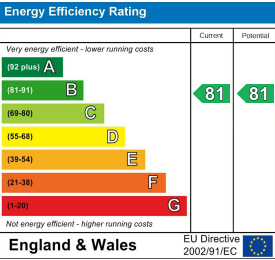
Area Map



Floor Plan



Energy Efficiency Graph



These particulars, whilst believed to be accurate are set out as a general outline only for guidance and do not constitute any part of an offer or contract. Intending purchasers should not rely on them as statements of representation of fact, but must satisfy themselves by inspection or otherwise as to their accuracy. No person in this firms employment has the authority to make or give any representation or warranty in respect of the property.