



52 King Street / 8 St Alphege Lane  
Canterbury CT1 2XS  
£2,520 Per Calendar Month





52 King Street / 8 St Alphege Lane, Canterbury, CT1 2XS

**\*\*STUDENT ACCOMMODATION 25/26\*\***

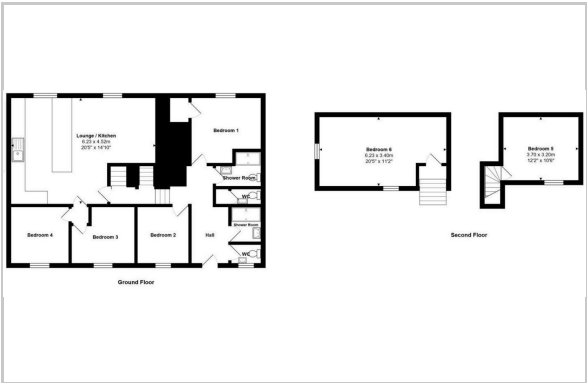
- SIX DOUBLE BEDROOM ACCOMMODATION
- LOCATED WITHIN THE CITY WALLS
- STONE THROW AWAY FROM THE CATHEDRAL
- 2X SEPARATE WCS
- 2X SEPARATE SHOWER ROOM
- GREAT COMMUNAL AREA
- Bills Package available, please contact us direct for more information.



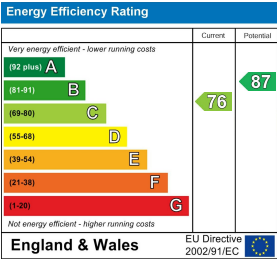
Area Map



Floor Plan



Energy Efficiency Graph



These particulars, whilst believed to be accurate are set out as a general outline only for guidance and do not constitute any part of an offer or contract. Intending purchasers should not rely on them as statements of representation of fact, but must satisfy themselves by inspection or otherwise as to their accuracy. No person in this firms employment has the authority to make or give any representation or warranty in respect of the property.

57 Castle Street, Canterbury, Kent, CT1 2PY  
Tel: 01227 767200 Email: lettingssales@regal-estates.co.uk