



Park House  
Marlowe Avenue Canterbury CT1 2QN  
£750 PCM



Park House, Marlowe Avenue, Canterbury, CT1 2QN

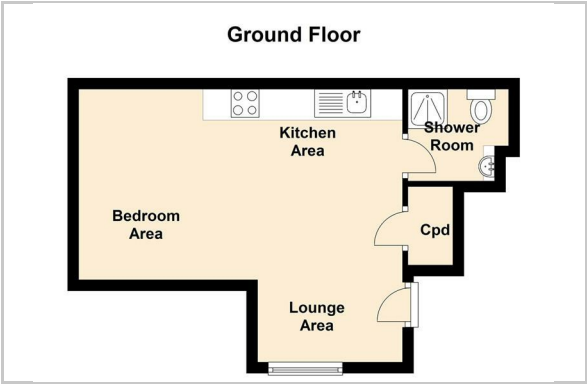
Regal Lettings are delighted to offer this modern double ground floor studio apartment, located in the City Centre which is conveniently close to all amenities, comprises open plan lounge, kitchen and bedroom area fitted wardrobes and shower room.

Note: 12 Months. Furnished. Council Tax Band B. Guarantors must be provided.

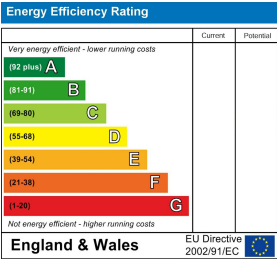
Area Map



Floor Plan



Energy Efficiency Graph



These particulars, whilst believed to be accurate are set out as a general outline only for guidance and do not constitute any part of an offer or contract. Intending purchasers should not rely on them as statements of representation of fact, but must satisfy themselves by inspection or otherwise as to their accuracy. No person in this firms employment has the authority to make or give any representation or warranty in respect of the property.