



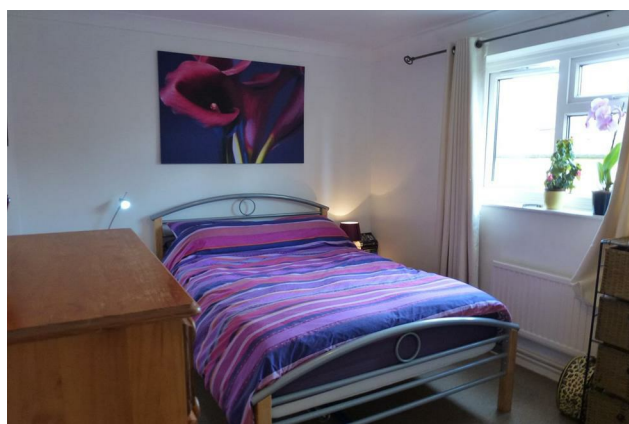
Forge House
The Street Ickham CT3 1QW
£875 PCM - Council Tax Band A



5 Forge House, The Street, Ickham, CT3 1QW

This purpose built ground floor flat is located in the beautiful village of Ickham, on the outskirts of Canterbury. The accommodation offers a double bedroom, lounge/diner, modern kitchen and bathroom. Other benefits include UPVC double glazed windows, gas fired central heating. To the outside there is secure parking.

NOTE No pets. Council Tax Band A.



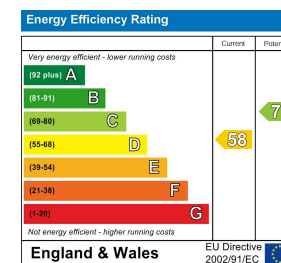
Area Map



Floor Plan



Energy Efficiency Graph



These particulars, whilst believed to be accurate are set out as a general outline only for guidance and do not constitute any part of an offer or contract. Intending purchasers should not rely on them as statements of representation of fact, but must satisfy themselves by inspection or otherwise as to their accuracy. No person in this firm's employment has the authority to make or give any representation or warranty in respect of the property.