

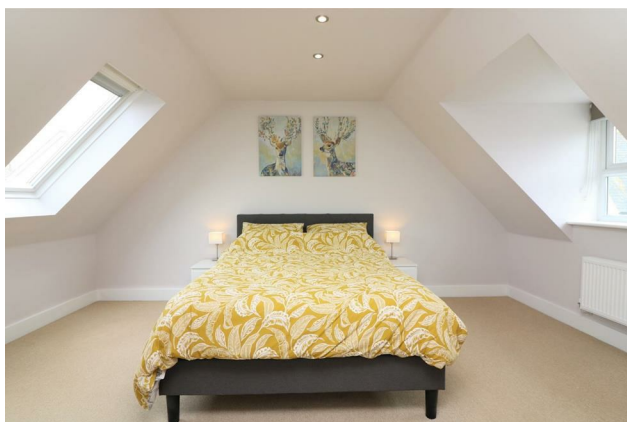


21 Heronden View  
Eastry Kent CT13 0EZ  
£1,800 PCM

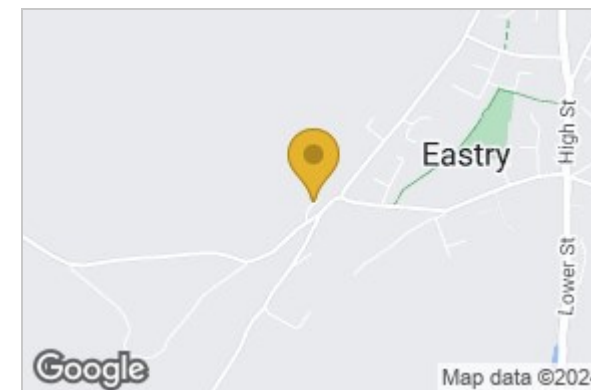
## 21 Heronden View, Eastry, Kent, CT13 0EZ

This four bedroom family home is located on the edge of the village of Eastry. The ground floor accommodation comprises entrance hallway, ground floor WC, kitchen/ dining room which was recently refitted and a dual aspect living room. To the first floor is three bedrooms and a family bathroom and second principle bedroom with en-suite. The landlord has also recently redecorated throughout. Mainly laid to lawn rear garden. There is a single garage, with driveway offering parking for one car.

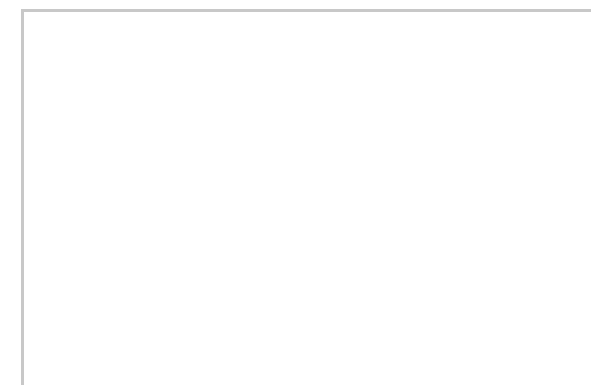
Note: 12 Months. Unfurnished. Council Tax Band E.



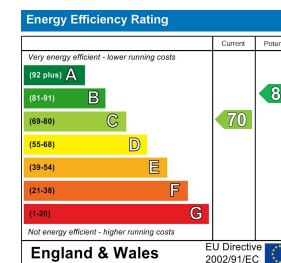
### Area Map



### Floor Plan



### Energy Efficiency Graph



These particulars, whilst believed to be accurate are set out as a general outline only for guidance and do not constitute any part of an offer or contract. Intending purchasers should not rely on them as statements of representation of fact, but must satisfy themselves by inspection or otherwise as to their accuracy. No person in this firm's employment has the authority to make or give any representation or warranty in respect of the property.