



13 Zealand Road
Canterbury CT1 3QW
£1,500 Per Calendar Month

 3  1  2  D

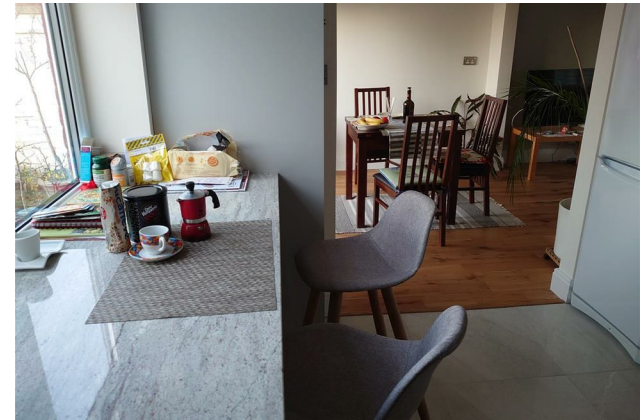
13 Zealand Road, Canterbury, CT1 3QW

Welcome to this charming semi-detached house located on Zealand Road in the picturesque city of Canterbury. This property boasts a flowing reception room, perfect for entertaining guests or simply relaxing with your loved ones. With three bedrooms (two doubles and a single), there is ample space for a growing family or for those who enjoy having a home office or hobby room.

The house features a well-maintained bathroom, ensuring convenience and comfort for all residents. One of the highlights of this property is the parking space available for two vehicles, a rare find in this bustling city. Say goodbye to the hassle of searching for parking after a long day at work!

Situated in a desirable location, this house offers not only a comfortable living space but also easy access to local amenities, schools, and transport links. The garden has been beautifully maintained by the landlord and lovingly restored inside.

Note: 12 Months Minimum Council Tax Band B



These particulars, whilst believed to be accurate are set out as a general outline only for guidance and do not constitute any part of an offer or contract. Intending purchasers should not rely on them as statements of representation of fact, but must satisfy themselves by inspection or otherwise as to their accuracy. No person in this firm's employment has the authority to make or give any representation or warranty in respect of the property.

57 Castle Street, Canterbury, Kent, CT1 2PY
Tel: 01227 767200 Email: lettingsales@regal-estates.co.uk