



6 Rochester Court
Canterbury Kent CT1 3YF
£1,100 PCM - Council Tax Band B



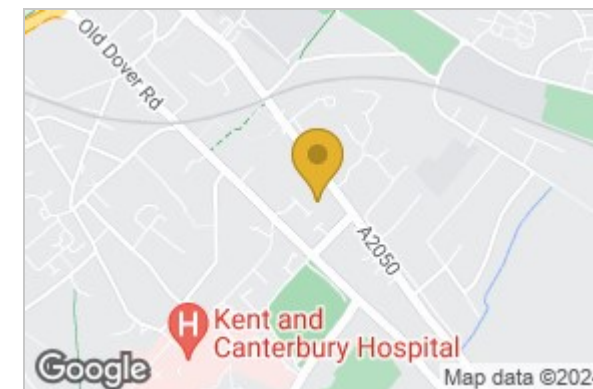
6 Rochester Court, Canterbury, Kent, CT1 3YF

First Floor Two Bedroom apartment located in South Canterbury, offering generously sized accommodation throughout. The property comprises of an `L` shaped hallway with plenty of storage, two bedrooms, bathroom with bath and separate shower, fitted kitchen/breakfast room with white goods and double aspect lounge. There is a private car park with your one allocated space.

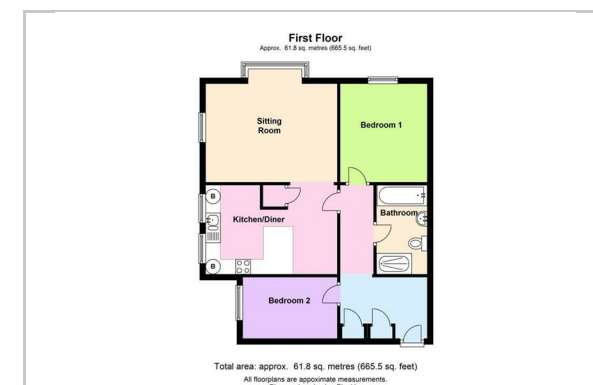
NOTE: Unfurnished - No pets, no smokers and working professionals only. Council Tax - B. EPC - C



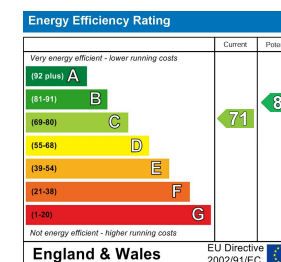
Area Map



Floor Plan



Energy Efficiency Graph



These particulars, whilst believed to be accurate are set out as a general outline only for guidance and do not constitute any part of an offer or contract. Intending purchasers should not rely on them as statements of representation of fact, but must satisfy themselves by inspection or otherwise as to their accuracy. No person in this firm's employment has the authority to make or give any representation or warranty in respect of the property.