



1 Queenborough Business Park Main Road  
Queenborough ME11 5DY  
£1,250 Per Month



# 1 Queenborough Business Park Main Road, Queenborough, ME11 5DY

The office is located on the second floor of this recently refurbished building, achieving a sophisticated and modern finish.

Positioned prominently, it enjoys a prime location directly across from Queenborough train station and boast convenient access to the M2 and M20 motorways.

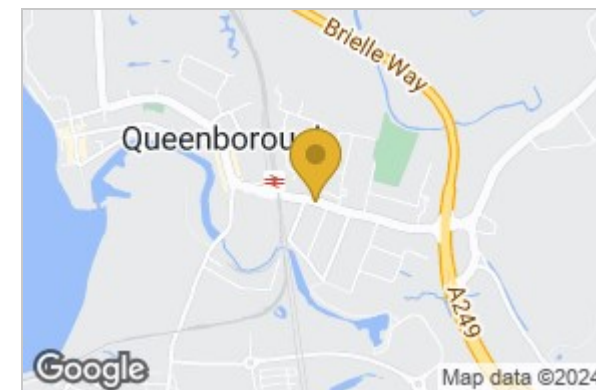
The office measures 9.1m x 5m and is equipped with a cutting-edge air conditioning and heating system, ensuring optimal comfort.

Additionally, they are fully integrated with network and internet access to meet modern technological needs (subject to our fair usage policy). Common areas undergo thorough cleaning on a weekly basis to guarantee a hygienic and well-maintained shared environment for everyone.

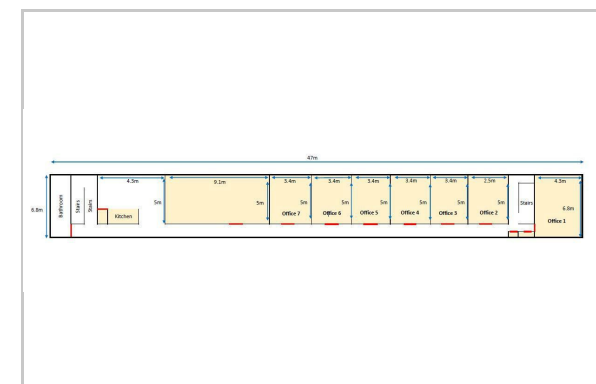
You will also enjoy complimentary access to a communal kitchen. This shared space comes fully equipped with essential white goods and everyday kitchen appliances. Furthermore, there is available seating at our breakfast bar where you can relax, enjoy a beverage, and take a break from your office or desk space.



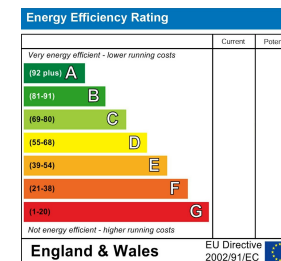
## Area Map



## Floor Plan



## Energy Efficiency Graph



These particulars, whilst believed to be accurate are set out as a general outline only for guidance and do not constitute any part of an offer or contract. Intending purchasers should not rely on them as statements of representation of fact, but must satisfy themselves by inspection or otherwise as to their accuracy. No person in this firm's employment has the authority to make or give any representation or warranty in respect of the property.