



10 The Elders
Court Hill Littlebourne CT3 1XT
£1,050 PCM



10 The Elders, Court Hill, Littlebourne, CT3 1XT

A two bedroom house located in the popular village of Littlebourne, located just outside of Canterbury. The layout comprises of a kitchen/breakfast room and separate living room with a door leading to the garden. Upstairs there are two double bedrooms and an additional study (not useable as a bedroom). On street parking.

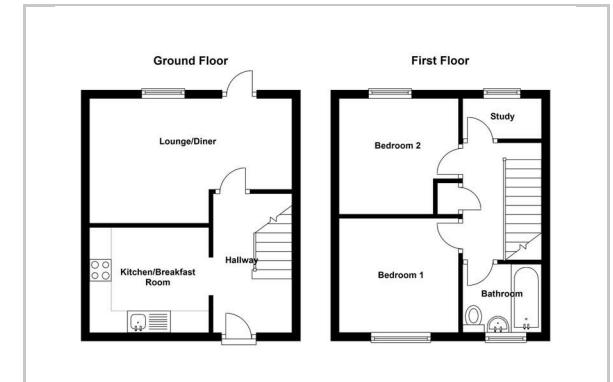
NOTE: Unfurnished. Council Tax Band B. 12 Months.



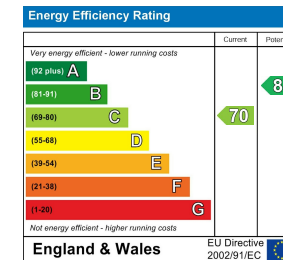
Area Map



Floor Plan



Energy Efficiency Graph



These particulars, whilst believed to be accurate are set out as a general outline only for guidance and do not constitute any part of an offer or contract. Intending purchasers should not rely on them as statements of representation of fact, but must satisfy themselves by inspection or otherwise as to their accuracy. No person in this firm's employment has the authority to make or give any representation or warranty in respect of the property.