



4 Railway Terrace Sandwich Road
Woodnesborough Sandwich CT13 0LY
£1,350 Per Calendar Month



3



1



1



A

4 Railway Terrace Sandwich Road, Woodnesborough, Sandwich, CT13 0LY

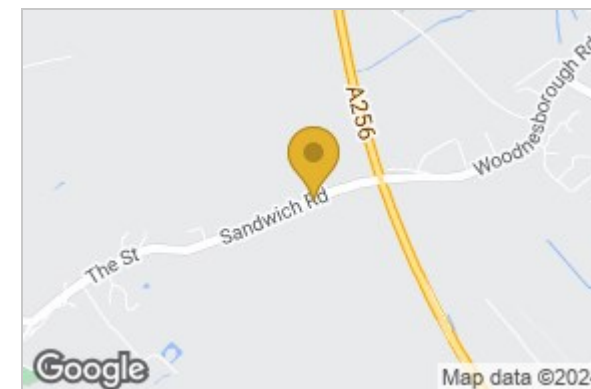
Welcome to this charming semi-detached house located on Sandwich Road in the picturesque village of Woodnesborough, near the historic town of Sandwich where there is a collection of four new build properties to choose from. This delightful property boasts a cosy reception room, perfect for relaxing or entertaining guests, a good sized kitchen/dining room and downstairs WC. With three inviting bedrooms, there is ample space for a growing family or visiting friends. The house features a well-appointed bathroom, ensuring convenience for all residents. The house is also fitted with solar panels and electric car charging point.

If you're looking for a new family home, this property has the potential to fulfil your needs. Don't miss the opportunity to make this brand new house your own and enjoy the benefits this has to offer.

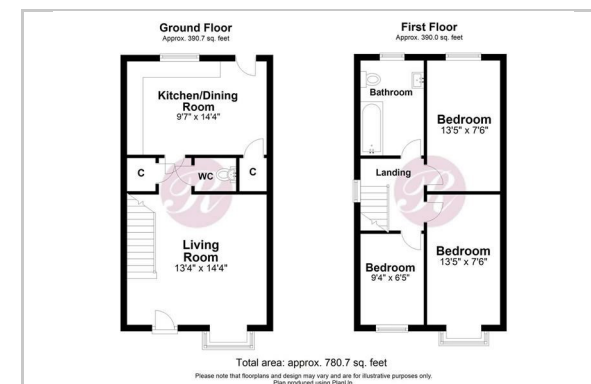
Note: 12 Months. Unfurnished.



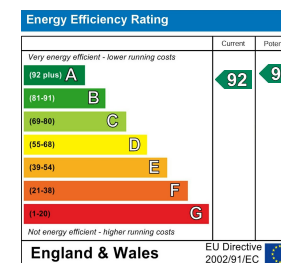
Area Map



Floor Plan



Energy Efficiency Graph



These particulars, whilst believed to be accurate are set out as a general outline only for guidance and do not constitute any part of an offer or contract. Intending purchasers should not rely on them as statements of representation of fact, but must satisfy themselves by inspection or otherwise as to their accuracy. No person in this firm's employment has the authority to make or give any representation or warranty in respect of the property.