



8 Pippin Close
Ash Kent CT3 2AU
£1,250 PCM



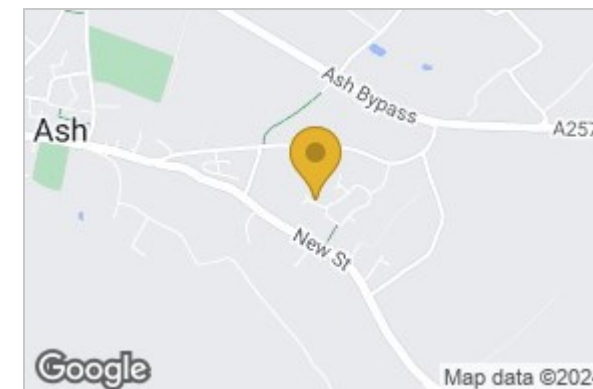
8 Pippin Close, Ash, Kent, CT3 2AU

A well presented three bedroom modern home situated within the popular village of Ash, with ground floor WC, living room, kitchen/ dining room, three first floor bedrooms and bathroom, en-suite to main bedroom, approximately 25ft rear garden and driveway leading to a spacious garage.

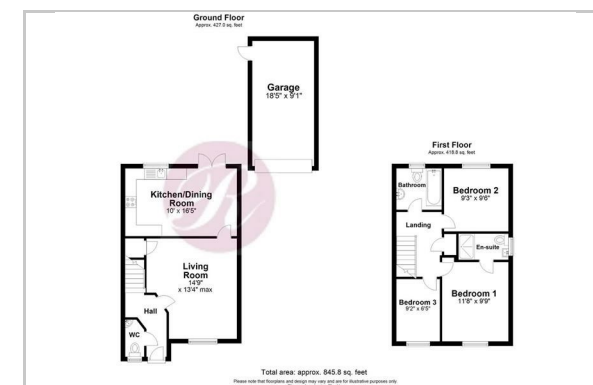
Note: Unfurnished. 12 Months. Council Tax Band C.



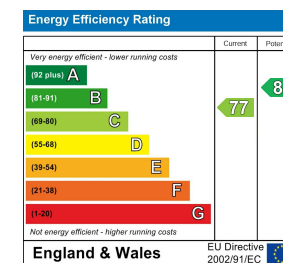
Area Map



Floor Plan



Energy Efficiency Graph



These particulars, whilst believed to be accurate are set out as a general outline only for guidance and do not constitute any part of an offer or contract. Intending purchasers should not rely on them as statements of representation of fact, but must satisfy themselves by inspection or otherwise as to their accuracy. No person in this firm's employment has the authority to make or give any representation or warranty in respect of the property.