



Sturry Villas  
Sturry Hill Sturry CT2 0NQ  
£860 PCM - Council Tax Band B



## Sturry Villas, Sturry Hill, Sturry, CT2 0NQ

The property available is a one bedroom ground floor apartment comprising of a kitchen, lounge/diner, one double bedroom and a bathroom. The property will be offered with one allocated parking space.

Sturry Village is perfectly placed on the outskirts of Canterbury and provides good access to the city and surrounding coastal towns such as Whitstable, Herne Bay and Margate. The development is located nearby a Sturry Train Station, which allows you access to the HS1 train link to St Pancras International, via Ashford, in 1 hour.

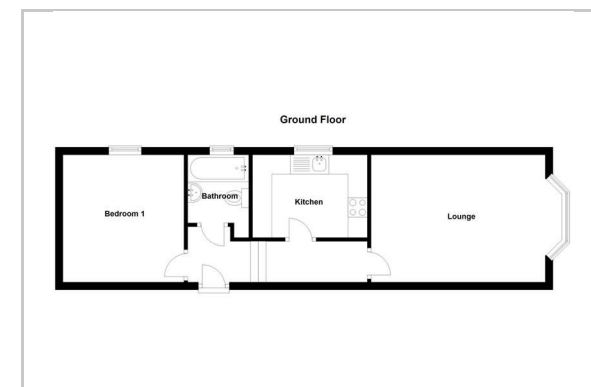
Note: 24 Month Contract. Unfurnished.



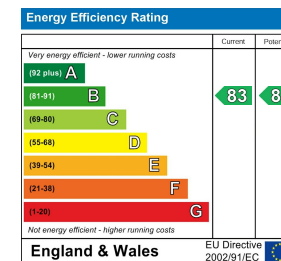
## Area Map



## Floor Plan



## Energy Efficiency Graph



These particulars, whilst believed to be accurate are set out as a general outline only for guidance and do not constitute any part of an offer or contract. Intending purchasers should not rely on them as statements of representation of fact, but must satisfy themselves by inspection or otherwise as to their accuracy. No person in this firm's employment has the authority to make or give any representation or warranty in respect of the property.