



HUNTERS[®]
HERE TO GET *you* THERE

145 Greenhaven Drive, Thamesmead, London, SE28 8FT

145 Greenhaven Drive, Thamesmead, London, SE28 8FT

Guide Price £270,000-£280,000

Situated in the popular Greenhaven Drive with Views over looking the River Thames is this charming second-floor apartment. The property offers a delightful living experience with stunning river views from the lounge and the separate kitchen plus two well-proportioned bedrooms and bathroom, making it an ideal choice for couples, small families, or investors seeking a rental opportunity.

The flat is presented in excellent condition and is chain-free, allowing for a smooth and hassle-free purchase. It features double glazing throughout, ensuring a warm and quiet environment, complemented by efficient gas-fired central heating for those cooler months, plus the benefit of one parking space.

Residents will appreciate the well-maintained communal gardens, providing a lovely outdoor space to relax and unwind. The location is particularly advantageous, with the benefit of the Thames Path, convenient bus routes nearby that offer easy access to Abbey Wood and Woolwich Arsenal train stations, Elizabeth Line, as well as the Docklands Light Railway (DLR). This makes commuting to central London and beyond both straightforward and efficient.

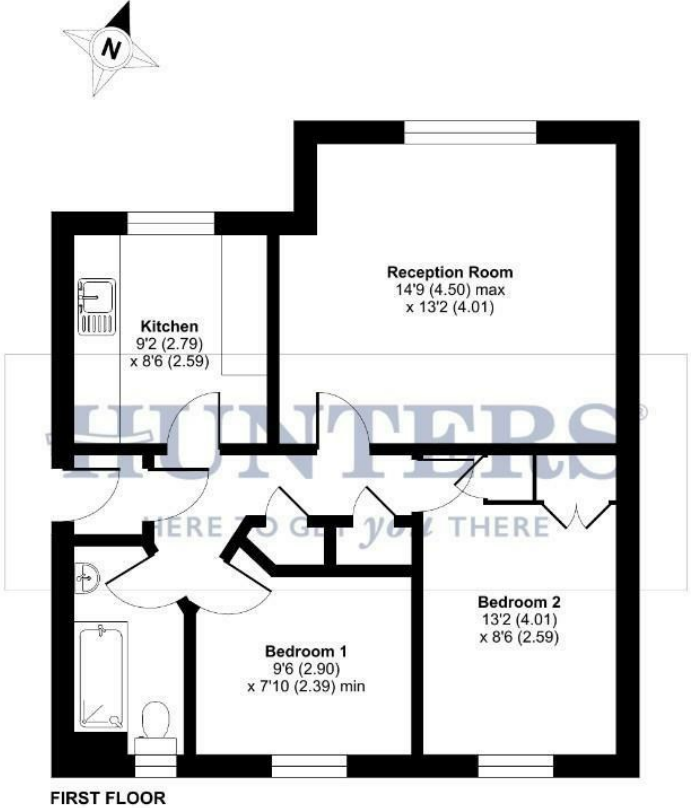
Additionally, the property is close to the town Centre, where you will find a variety of shops and amenities to cater to your daily needs. For those who enjoy outdoor activities, the nearby Thames Path offers scenic walks along the river, perfect for leisurely strolls or invigorating jogs.

In summary, this two-bedroom flat on Greenhaven Drive presents a fantastic opportunity to acquire a well-located home with beautiful river views, excellent transport links, and a vibrant community atmosphere. Don't miss the chance to make this lovely property your own.

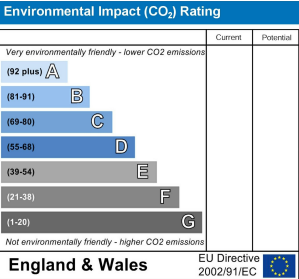
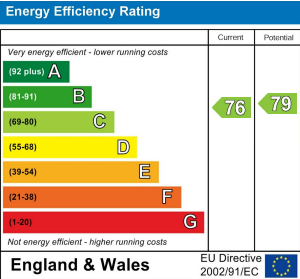
Hunters Abbey Wood 19-21 Wilton Road, Abbey Wood, London SE2 9RH | 020 8311 1000
abbeywood@hunters.com | www.hunters.com

Greenhaven Drive, London, SE28

Approximate Area = 596 sq ft / 55.4 sq m
For identification only - Not to scale



Floor plan produced in accordance with RICS Property Measurement Standards incorporating International Property Measurement Standards (IPMS2 Residential). ©richcom 2025.
Produced for Hunters Kent Ltd – Abbeywood & Bexleyheath. REF: 1261904



COMMUNAL ENTRANCE

ENTRANCE LOBBY

ENTRANCE HALL

KITCHEN

9'2 x 8'6

LOUNGE

14'9 x 13'2

BEDROOM ONE

13'2 x 8'6

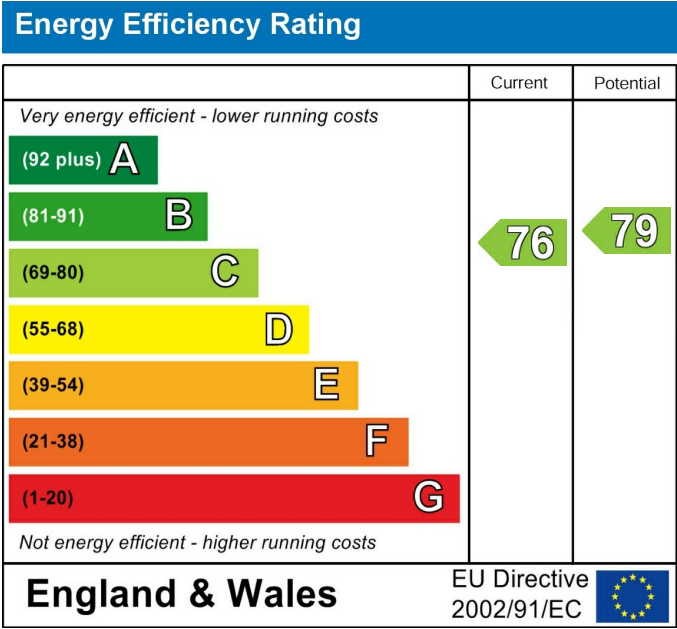
BEDROOM TWO

9'6 x 7'10

BATHROOM

COMMUNAL GARDEN

ALLOCATED PARKING SPACE



These particulars are intended to give a fair and reliable description of the property but no responsibility for any inaccuracy or error can be accepted and do not constitute an offer or contract. We have not tested any services or appliances (including central heating if fitted) referred to in these particulars and the purchasers are advised to satisfy themselves as to the working order and condition. If a property is unoccupied at any time there may be reconnection charges for any switched off/disconnected or drained services or appliances - All measurements are approximate. If you are thinking of selling your home or just curious to discover the value of your property, Hunters would be pleased to provide free, no obligation sales and marketing advice. Even if your home is outside the area covered by our local offices we can arrange a Market Appraisal through our national network of Hunters estate agents.









