



WINDSOR COURT | LONDON | NW11

 2  1  Y  855.00 sq ft

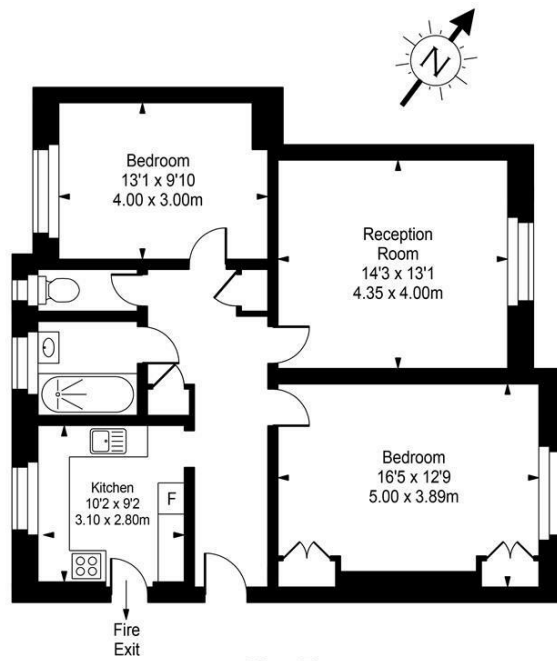
£599,950 Share of Freehold



- Share of freehold
- Two double bedrooms
- First floor
- Large reception room

alan goldin estates

Windsor Court



First Floor

Approx Gross Internal Area 855 Sq Ft - 79.40 Sq M

FOR ILLUSTRATIVE PURPOSES ONLY. NOT TO SCALE.

Whilst every attempt has been made to ensure the accuracy of the floorplan shown, all measurements, positioning, fixtures, fittings and any other data shown are an approximate interpretation for illustrative purposes only and are not to scale. No responsibility is taken for any error, omission, misstatement or use of data shown. Floor plan by www.bestangle.co.uk.

WINDSOR COURT | LONDON | NW11

EPC: Current - D Potential - C

Terms: Share of Freehold Ground Rent Type here Service Charge type here



15 Temple Fortune Parade Finchley Road London NW11 0QS

☎ 020 8209 0101 ✉ info@alangoldinestates.co.uk 🌐 alangoldinestates.co.uk

Registered in England No. 3252459 Registered Office: Sterling House, Fulbourne Rd, Walthamstow, London E17 4EE

Sales • Lettings • Management • Investments