



HAVEN LODGE | LONDON | NW11

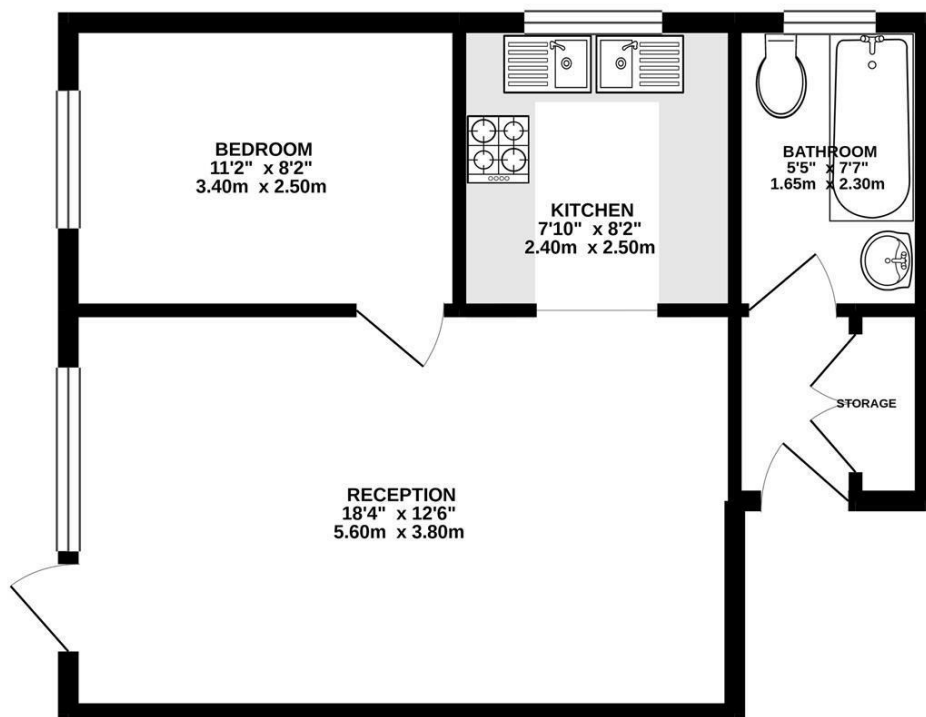
 1
  1
  Y
  sq ft

£1,295 Per Month



■ Keys

alan
goldin estates



TOTAL FLOOR AREA : 450 sq.ft. (41.8 sq.m.) approx.

Whilst every attempt has been made to ensure the accuracy of the floorplan contained here, measurements of doors, windows, rooms and any other items are approximate and no responsibility is taken for any error, omission or mis-statement. This plan is for illustrative purposes only and should be used as such by any prospective purchaser. The services, systems and appliances shown have not been tested and no guarantee as to their operability or efficiency can be given.



HAVEN LODGE | LONDON | NW11

EPC: Current - C Potential - C

Terms: Ground Rent Type here Service Charge type here

15 Temple Fortune Parade Finchley Road London NW11 0QS

☎ 020 8209 0101 ✉ info@alangoldinestates.co.uk 🌐 alangoldinestates.co.uk

Registered in England No. 3252459 Registered Office: Sterling House, Fulbourne Rd, Walthamstow, London E17 4EE

Sales • Lettings • Management • Investments