

OPEN SATURDAYS 10.30AM - 3.00PM
**** STAMP DUTY INCENTIVES AVAILABLE ****



Fishers Wood Grove, Bromley BR2 8HA

£800,000 Freehold



jdm New Homes invites you to view FISHERS WOOD GROVE, nine impressively presented new build homes. Set in a BEAUTIFUL ENVIRONMENT this new gated development has a semi-rural feel with the houses set within fields, yet moments from Bromley Common and Oakley Road.

This hidden and SURPRISING ENCLAVE offers five detached houses with 4 or 5 bedrooms and four semi-detached houses with 3 bedrooms. Reception space is well provided for and all accommodation is set over just two floors.

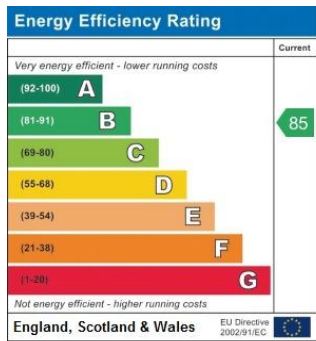
Other features you will see on viewing include highly attractive individual finish Gardiners kitchens with granite work surfaces and upstands; integrated appliances including Bosch electric oven with 3D hot air distribution, Bosch brushed steel gas hob, (some with wok style central burner), Bosch canopy extractor hood; integrated dishwasher and integrated 70:30 split fridge/freezer. The bathrooms showcase contemporary white suites by Duravit & Alveus, Hansgrohe chrome mixer taps and thermostatic showers, chrome heated towel rails and fitted mirrors.

Further highlights include Cat 6 cabling, Virgin Media wiring, installed alarm system, a mixture of flooring including porcelain tiles, oak and carpet, fully landscaped front gardens and central courtyard and a 10 year build warranty.

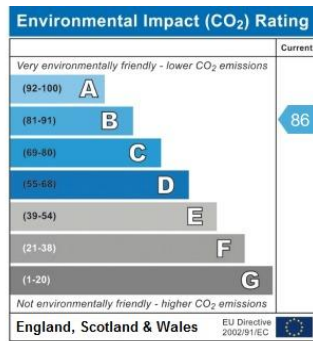
FISHERS WOOD GROVE is situated in a great spot for local schools including Bromley College, Bishop Justus, Ravensbourne, Ravenswood, Bromley High and the Hayes schools. Transport is very convenient with the station at Bromley South for trains into London Victoria and London Blackfriars, along with various bus routes from Bromley Common.

Locally lifestyle and leisure are well catered for with golf courses and various health & exercise clubs along with many other sports including tennis, cricket and horse riding plus parks, commons and woodlands. Locksbottom Village is nearby with an attractive selection of individual restaurants, pubs, tea and coffee shops plus supermarkets and health and lifestyle facilities. Wider shopping is easy at the Glades shopping centre in Bromley town centre and there is further extensive shopping at the Bluewater shopping mall about a 16 mile drive away.

Photos are of various houses at Fishers Wood Grove. Distances are approximate.



Reference:
Plots 4 - 7



Please refer to

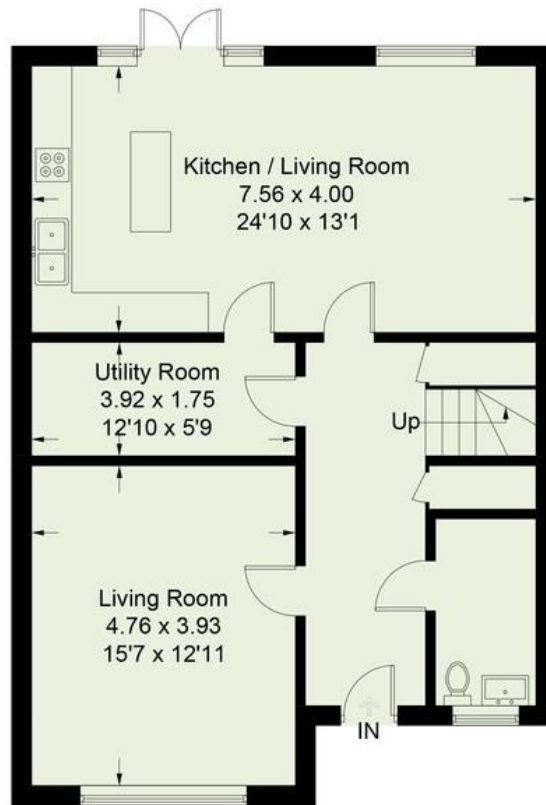
www.jdmestateagents.com

to view our full area guides

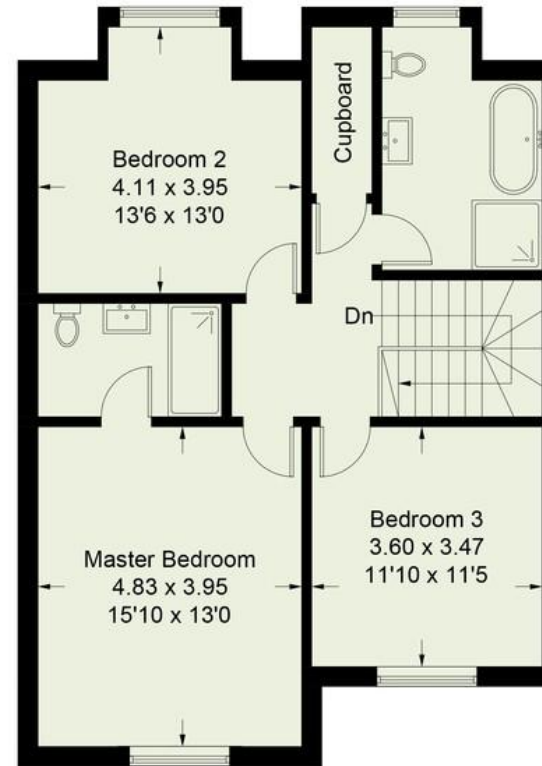


Houses 4, 5, 6 & 7 Semi - detached

Approximate Gross Internal Area = 152.1 sq m / 1637 sq ft + separate garage



Ground Floor



First Floor

Please note the floor plan may be handed in some plots

Illustration for identification purposes only, measurements are approximate, not to scale. floorplansUsketch.com © (ID479853)

