



## 11 Castle Point, Wood Street

, Hinckley, LE10 1JQ

Offers In The Region Of £124,000



A modern 2 bedroom, 2 bathroom first floor apartment, ideally located close to all local amenities and Hinckley town centre. Additional benefits of electric panel heating, PVCu double glazing, secure car parking, security intercom, modern fitted kitchen, lounge with Juliet balcony.

**MUST BE VIEWED**

Ideally located for commuting to all major road links, such as the A5, M1, M6 and M69.



**Communal entrance hall (heated)**  
Leading to first floor apartment.

**Reception hall 12'4" x 11'2" (3.77 x 3.42)**  
Security intercom, down lights to the ceiling, electric panel heater, Cupboard housing washing machine and water tank.

**Modern fitted kitchen (rear) 10'3" x 7'10" (3.13 x 2.41)**  
Stainless steel sink unit, range of base and wall units, associated work surfaces.split level ceramic hob, electric (fan assisted) oven, extractor hood, ceramic tiled floor, fitted fridge, fitted freezer,

**Lounge / dining room (front) 12'9" x 10'3" (3.89 x 3.13)**  
PVCu double glazed french doors with juliet balcony, laminate floor and down lights to the ceiling.

**Bedroom 1 (front) 12'11" (max) x 9'1" (max) (3.95 (max) x 2.77 (max))**  
PVCu double glazed window, electric panel heater and down lights to the ceiling.

**En-suite shower (side) 5'4" x 5'3" (1.65 x 1.61)**  
Fitted shower cubicle with chrome mixer shower and side screen, wash hand basin, low flush wc, ceramic tiled floor, extractor fan, shaver point and ladder styled radiator.

**Bedroom 2 (front) 9'11" x 9'3" (3.03 x 2.83)**  
PVCu double glazed window, electric panel heater and down lights to the ceiling.

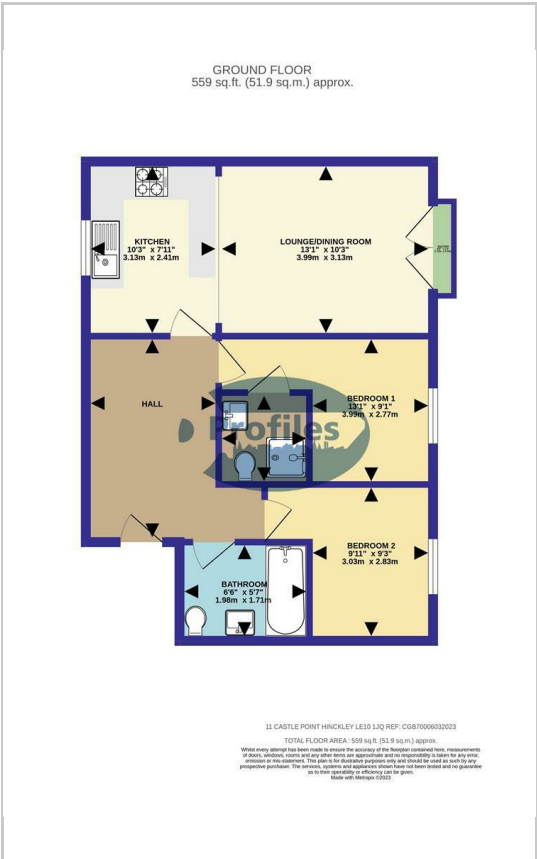
**Modern bathroom (side) 6'5" x 5'7" (1.98 x 1.71)**  
Full suite in white, comprising of panel bath, with a chrome mixer shower, wash hand basin, low flush wc, electric ladders styled radiator, and ceramic tiled floor.

**Outside**  
Secure parking.

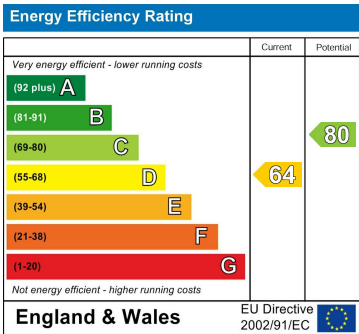
**Area Map**



**Floor Plans**



**Energy Efficiency Graph**



These particulars, whilst believed to be accurate are set out as a general outline only for guidance and do not constitute any part of an offer or contract. Intending purchasers should not rely on them as statements of representation of fact, but must satisfy themselves by inspection or otherwise as to their accuracy. No person in this firms employment has the authority to make or give any representation or warranty in respect of the property.