



Station Road, Lichfield WS13 6HZ

HUNTERS[®]
EXCLUSIVE



Station Road, Lichfield WS13 6HZ

This recently refurbished, three bedroomed detached property is located within the City Centre of Lichfield. Conveniently located for transport links and rail links giving easy access to Birmingham and surrounding areas. The accommodation in brief comprises of; Entrance Hallway, Living Room, Kitchen/Diner, First Floor Landing, Master Bedroom with En-suite, two further Bedrooms and a Family Bathroom. Gardens to front and rear and driveway providing off-road parking. EPC rating - C





Entrance

Accessed via a wooden door into the entrance porch, with a double-glazed obscured window and door giving access into the hallway

Hallway

having a ceiling light point, radiator and laminate wood effect flooring

Living Room

with a UPVC double glazed bay window and window to the side, radiator and ceiling light point

Kitchen/Diner

having a range of wooden base units with marble effect work surfaces and coordinating breakfast bar, belfast sink with mixer tap, electric hob and oven with extractor fan and a useful understairs storage cupboard. Also having spotlights, radiator, two UPVC double-glazed windows to the side with bifold doors leading into the garden and a UPVC glass door giving access to the side of the property.

First Floor Landing

having a UPVC double-glazed window to the side aspect and spotlights



Bedroom One

with a UPVC double-glazed window to the rear aspect, high ceilings with exposed wooden beams, radiator, a fitted wardrobe and access to the en-suite

En-Suite

with tiles to wall, laminate flooring, spotlights, a UPVC double-glazed obscured window to the side, walk in mains shower cubicle, vanity handwash basin, heated towel rail and a low level WC

Bedroom Two

having a double-glazed UPVC window to the front and side aspect, original brick feature fireplace, high ceilings with exposed wooden beams, ceiling light point and radiator

Bedroom Three

having a UPVC double-glazed window to the rear, radiator and high ceilings with exposed beams

Family Bathroom

having a mains shower over bath, low level WC, vanity handwash basin and LED wall mirror, heated towel rail, tiles to wall and spotlights

Outside

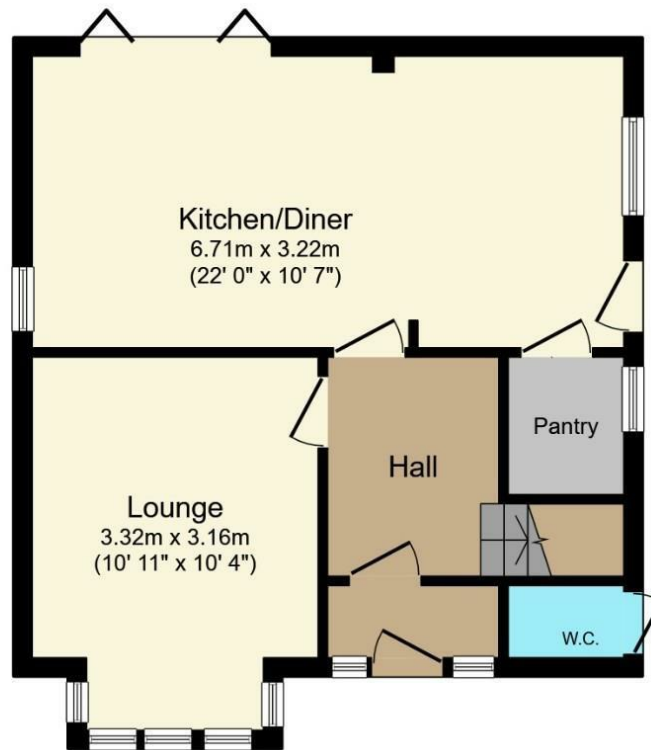


the rear garden is majority laid to lawn with a patio area and pedestrian footpath, also benefitting from a wooden shed.

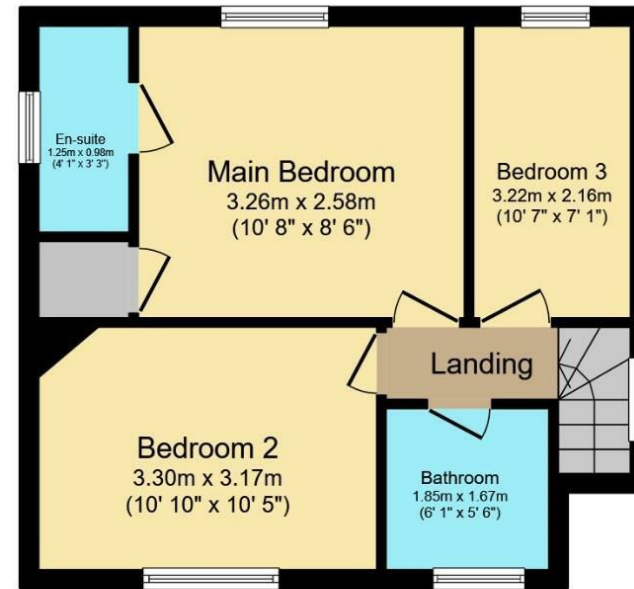
The front of the property is set back from the road with driveway space to the side of the property and a front garden.



These particulars are intended to give a fair and reliable description of the property but no responsibility for any inaccuracy or error can be accepted and do not constitute an offer or contract. We have not tested any services or appliances (including central heating if fitted) referred to in these particulars and the purchasers are advised to satisfy themselves as to the working order and condition. If a property is unoccupied at any time there may be reconnection charges for any switched off/disconnected or drained services or appliances - All measurements are approximate. If you are thinking of selling your home or just curious to discover the value of your property, Hunters would be pleased to provide free, no obligation sales and marketing advice. Even if your home is outside the area covered by our local offices we can arrange a Market Appraisal through our national network of Hunters estate agents.



Ground Floor

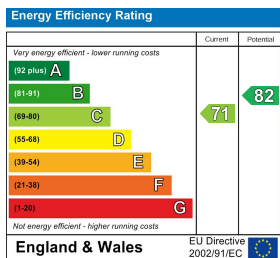


First Floor

Total floor area 83.2 m² (896 sq.ft.) approx

This floor plan is for illustrative purposes only. It is not drawn to scale. Any measurements, floor areas (including any total floor area), openings and orientation are approximate. No details are guaranteed, they cannot be relied upon for any purpose and they do not form part of any agreement. No liability is taken for any error, omission or misstatement. A party must rely upon its own inspection(s).

Powered by www.focalagent.com



Viewing Arrangements

Strictly by prior appointment only through the agent Hunters Hunters Lichfield - 01543 419000 <http://www.hunters.com>

HUNTERS[®]
EXCLUSIVE



HUNTERS[®]
EXCLUSIVE