

HUNTERS®

HERE TO GET *you* THERE



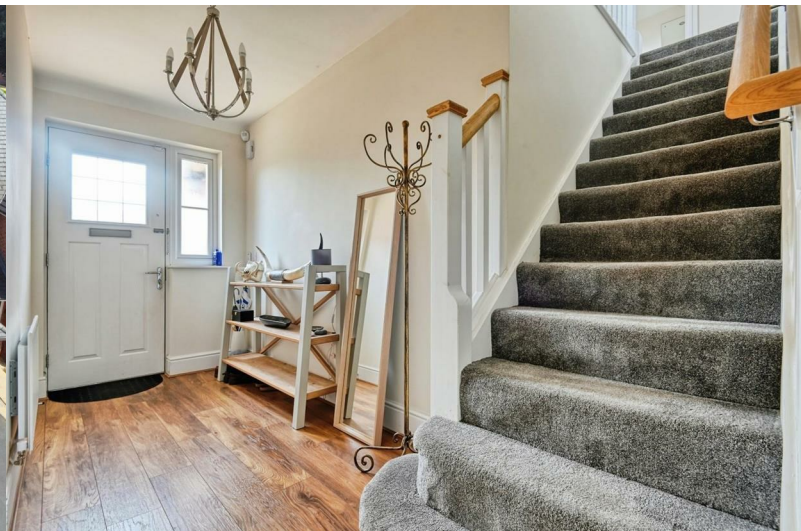
Alstonefield Close

Amington, Tamworth, B77 4FL

Asking Price £525,000



Council Tax: F



9 Alstonefield Close

Amington, Tamworth, B77 4FL

Asking Price £525,000



Front

Tarmac driveway with parking for multiple vehicles, lawn and shrubs, paved pathway

Lounge

16'10" x 11'10" (5.13m x 3.61m)

Double glazed window to front, wood effect laminate flooring, ceiling light, radiator, power points

Downstairs WC

Wood effect laminate flooring, part tiled walls, low flush WC, sink, radiator, extractor fan

Snug

9'9" x 9'5" (2.97m x 2.87m)

Double glazed window to rear, wood effect laminate flooring, ceiling light, radiator, power points

Utility Room

9'4" x 5'3" (2.84m x 1.60m)

Door to garden, wood effect laminate flooring, wall and base units, stainless steel sink and drainer, plumbing for washing machine and drainer, radiator, power points

Kitchen/ Diner

19'8" x 13'9" (5.99m x 4.19m)

Double glazed window to rear, double doors to garden, wood effect laminate flooring, wall and base units, breakfast bar, part tiled walls, built in double oven and hob, extractor hood, stainless steel sink and drainer, spot lights, radiator, power points

Bedroom One

13'6" x 11'11" (4.11m x 3.63m)

Double glazed window to front, carpeted flooring, ceiling light, radiator, power points

En-Suite

9'9" x 6'6" (2.97m x 1.98m)

Double glazed window to side, ceramic tile flooring, sink and vanity unit, low flush WC, walk in shower, heated towel rail, spot lights, extractor fan

Bedroom Two

15'7" x 9'2" (4.75m x 2.79m)

Double glazed window to rear, carpeted flooring, ceiling light, radiator, power points,

En-Suite

6'7" x 6'6" (2.01m x 1.98m)

Double glazed window to side, ceramic tile flooring, part tiled walls low flush WC, sink, walk in shower, heated towel rail, spot lights

Bedroom Three

11'6" x 8'11" (3.51m x 2.72m)

Double glazed window to rear, carpeted flooring, ceiling light, radiator, power points

Bedroom Four

11'6" x 9'9" (3.51m x 2.97m)

Double glazed window to rear, carpeted flooring, ceiling light, radiator, power points

Bathroom

8'6" x 6'3" (2.59m x 1.91m)

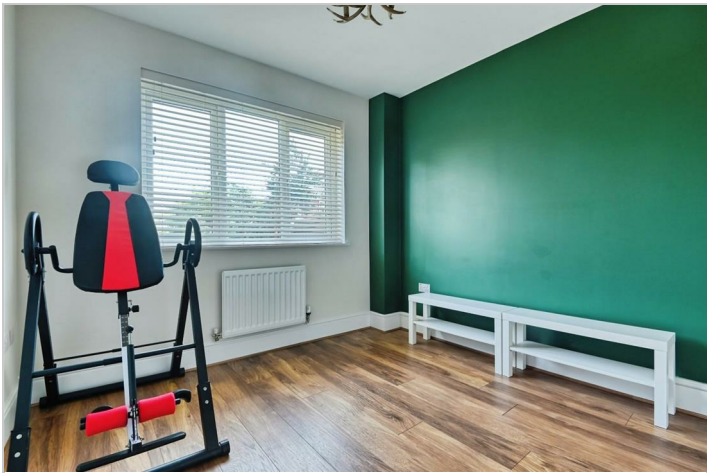
Garage

17'9" x 6'2" (5.41m x 1.88m)

Ceiling light, power points, up and over door

Garden

Enclosed garden with paved patio and lawn area



Road Map



Hybrid Map



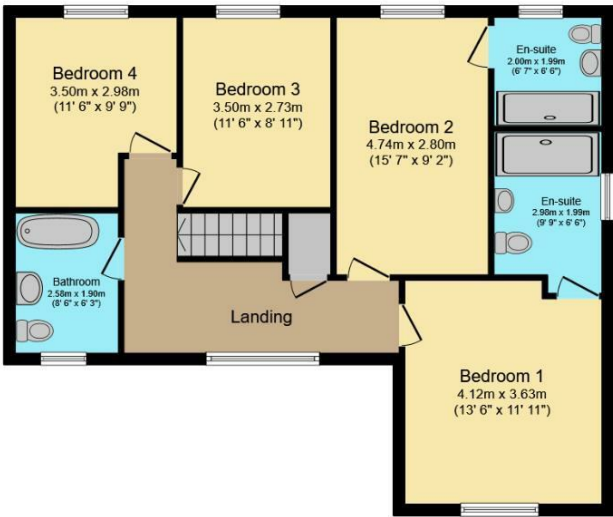
Terrain Map



Floor Plan



Ground Floor
Floor area 98.9 sq.m. (1,065 sq.ft.)



First Floor
Floor area 76.8 sq.m. (827 sq.ft.)

Total floor area: 175.7 sq.m. (1,892 sq.ft.)

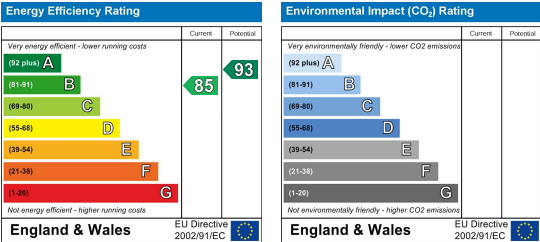
This floor plan is for illustrative purposes only. It is not drawn to scale. Any measurements, floor areas (including any total floor area), openings and orientations are approximate. No details are guaranteed, they cannot be relied upon for any purpose and do not form any part of any agreement. No liability is taken for any error, omission or misstatement. A party must rely upon its own inspection(s). Powered by www.Propertybox.io



Viewing

Please contact our Hunters Tamworth Office on 01827 66277 if you wish to arrange a viewing appointment for this property or require further information.

Energy Efficiency Graph



These particulars are intended to give a fair and reliable description of the property but no responsibility for any inaccuracy or error can be accepted and do not constitute an offer or contract. We have not tested any services or appliances (including central heating if fitted) referred to in these particulars and the purchasers are advised to satisfy themselves as to the working order and condition. If a property is unoccupied at any time there may be reconnection charges for any switched off/disconnected or drained services or appliances - All measurements are approximate. **THINKING OF SELLING?** If you are thinking of selling your home or just curious to discover the value of your property, Hunters would be pleased to provide free, no obligation sales and marketing advice. Even if your home is outside the area covered by our local offices we can arrange a Market Appraisal through our national network of Hunters estate agents.