

HUNTERS®

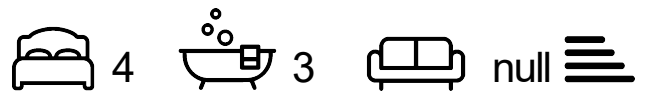
HERE TO GET *you* THERE



Whitesands Close

Amington, Tamworth, B77 3RD

Asking Price £425,000



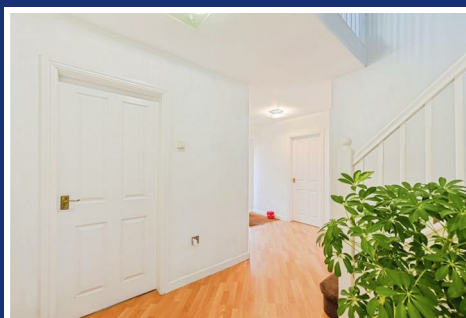
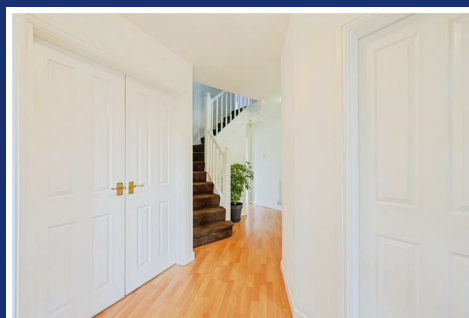
Council Tax: D



5 Whitesands Close

Amington, Tamworth, B77 3RD

Asking Price £425,000



Frontage

Driveway and lawn area.

Study

8'6 x 6'4 (2.59m x 1.93m)

Wood effect laminate flooring, double glazed window to front, radiator, ceiling light and power points.

Lounge

17'10 x 12'8 (5.44m x 3.86m)

Wood effect flooring, double doors to garden, ceiling light, radiator and power points.

Kitchen/Breakfast Room

16'3 x 9 (4.95m x 2.74m)

Stone tiled flooring, wall and base units, double glazed window to rear, double doors to garden, radiator and sink and drainer.

Utility

6'10 x 6'5 (2.08m x 1.96m)

Stone tile flooring, plumbing for washing machine, door to side, tile splash back and power points.

Dining Room

11'8 x 10'7 (3.56m x 3.23m)

Carpeted flooring, double glazed window to front, power points and radiator.

WC

7'10 x 3'10 (2.39m x 1.17m)

Wood effect laminate flooring, double glazed window to front, hand wash basin, low flush WC and radiator.

Bedroom One

15'4 x 12'11 (4.67m x 3.94m)

Carpeted flooring, double glazed window to rear, power points, ceiling light and radiator.

En-Suite

9'4 x 6'4 (2.84m x 1.93m)

Tiled effect flooring, walk in shower, low flush WC, part tiled walls, sink and vanity unit, double glazed window to rear and heated towel rail.

Bedroom Two

9'9 x 9'6 (2.97m x 2.90m)

Carpeted flooring, double glazed window to rear, power points, radiator and built in wardrobes.

Bedroom Three

9'6 x 9'3 (2.90m x 2.82m)

Carpeted flooring, double glazed window to side, built in cupboard, power points and radiator.

Bedroom Four

10'4 x 9'9 (3.15m x 2.97m)

Carpeted flooring, double glazed window to front, power points and radiator.

Bathroom

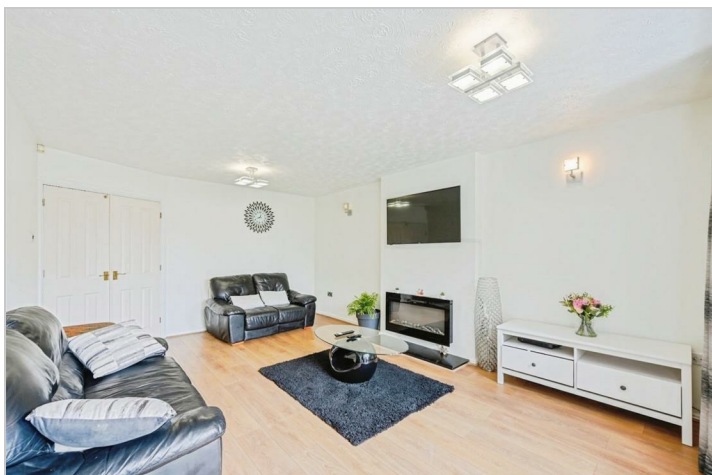
9'8 x 5'6 (2.95m x 1.68m)

Garden

Decking area and lawn.

Double garage

Up and over door, power points and light.



Road Map



Hybrid Map



Terrain Map



Floor Plan

Ground Floor

First Floor

Double Garage

This floor plan is for illustrative purposes only. It is not drawn to scale. Any measurements, floor areas (including any total floor area), openings and orientations are approximate. No details are guaranteed, they cannot be relied upon for any purpose and do not form any part of any agreement. No liability is taken for any error, omission or misstatement. A party must rely upon its own inspection(s). Powered by www.Propertybox.io

Viewing

Please contact our Hunters Tamworth Office on 01827 66277 if you wish to arrange a viewing appointment for this property or require further information.

Energy Efficiency Graph



These particulars are intended to give a fair and reliable description of the property but no responsibility for any inaccuracy or error can be accepted and do not constitute an offer or contract. We have not tested any services or appliances (including central heating if fitted) referred to in these particulars and the purchasers are advised to satisfy themselves as to the working order and condition. If a property is unoccupied at any time there may be reconnection charges for any switched off/disconnected or drained services or appliances - All measurements are approximate. **THINKING OF SELLING?** If you are thinking of selling your home or just curious to discover the value of your property, Hunters would be pleased to provide free, no obligation sales and marketing advice. Even if your home is outside the area covered by our local offices we can arrange a Market Appraisal through our national network of Hunters estate agents.