

**HUNTERS**<sup>®</sup>  
HERE TO GET *you* THERE

 3  1  2  D

# Cromwell Road, Tamworth

## Offers In Excess Of £280,000



HUNTERS OF TAMWORTH are delighted to offer FOR SALE with NO ONWARD CHAIN this charming three bedroom link-detached family home, Located in the highly sought after North side of Tamworth location which benefits from being a stone throw away from Tamworth town centre, local schools and transport links which is perfect for families looking for their next home!

In brief the property comprises; Entrance hallway, lounge, kitchen, dining room, three bedrooms and a family bathroom. To the rear of the property is an enclosed garden.

7 Bore Street, Lichfield, Staffordshire, WS13 6LJ | 01543 419000  
lichfield@hunters.com | www.hunters.com

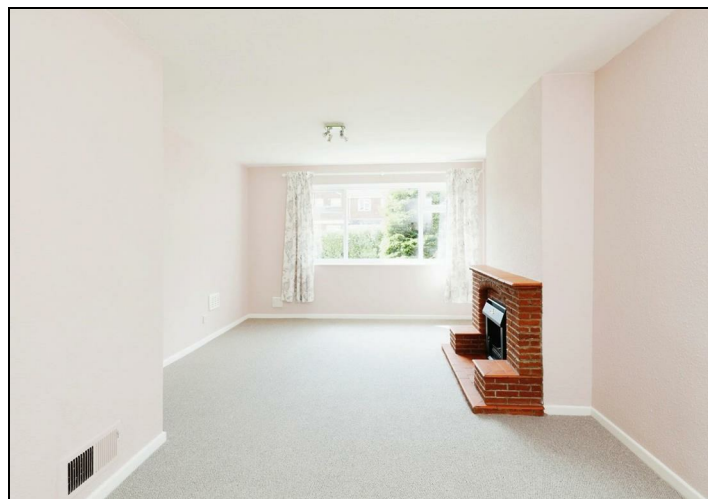
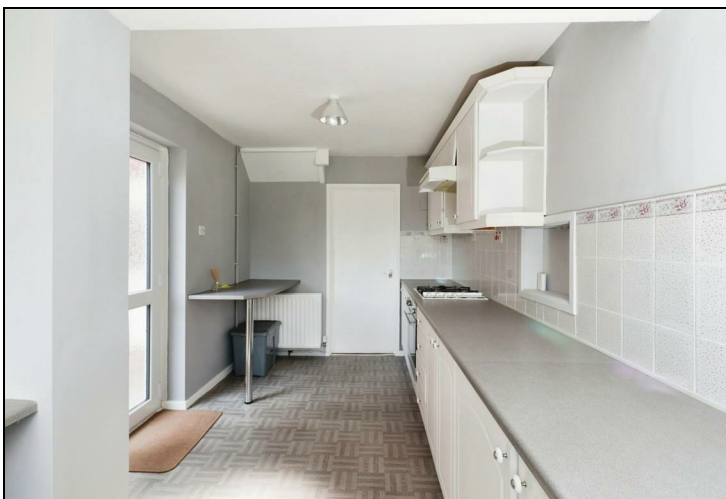


A wholly owned part of Hunters Property Group Limited | Registered Address 2 St Stephens Court, St Stephens Road, Bournemouth, Dorset, BH2 6LA | Registered Number: 03947557 England and Wales | VAT No: 180 8978 59

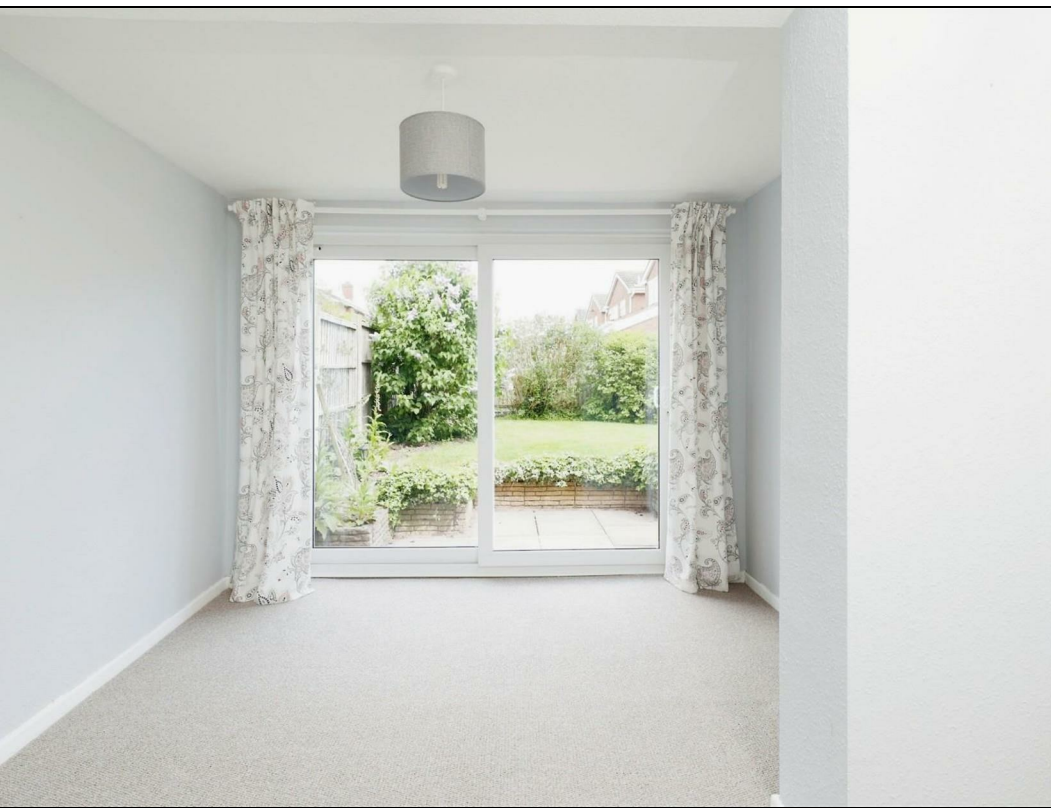
Your privacy is important to us, which is why we will never sell the personal data you provide to us to any third parties.

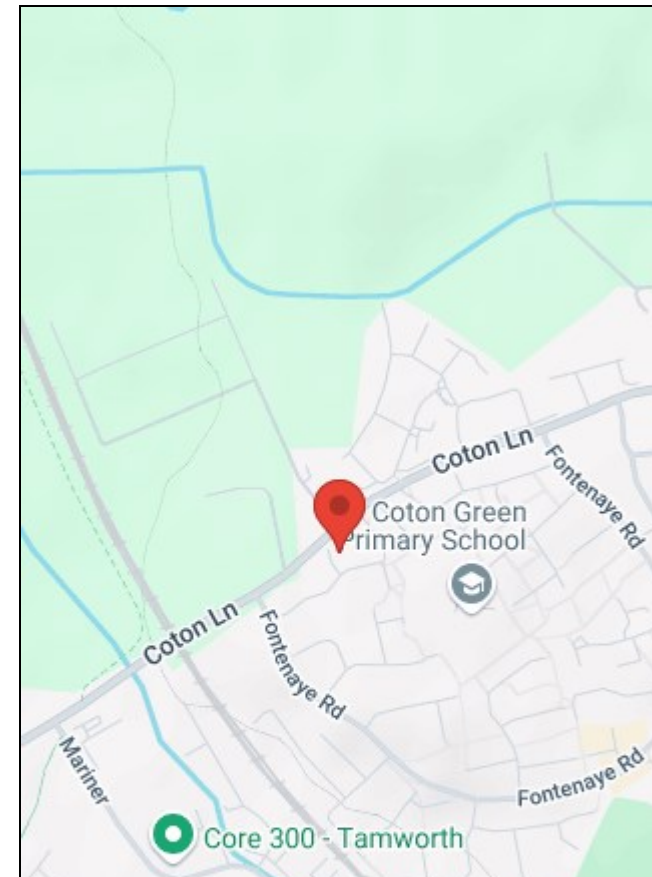
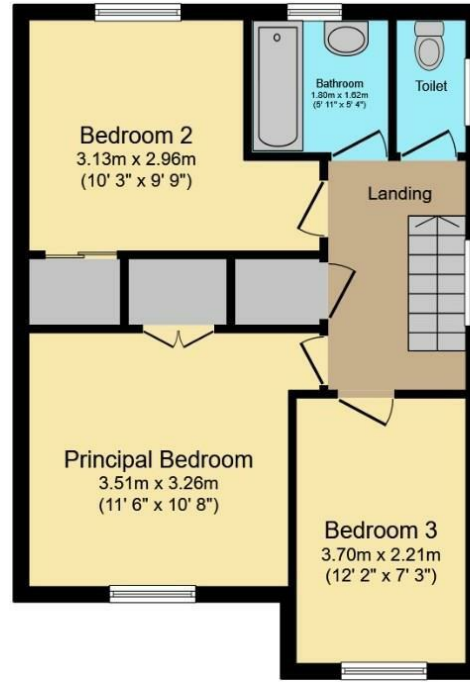
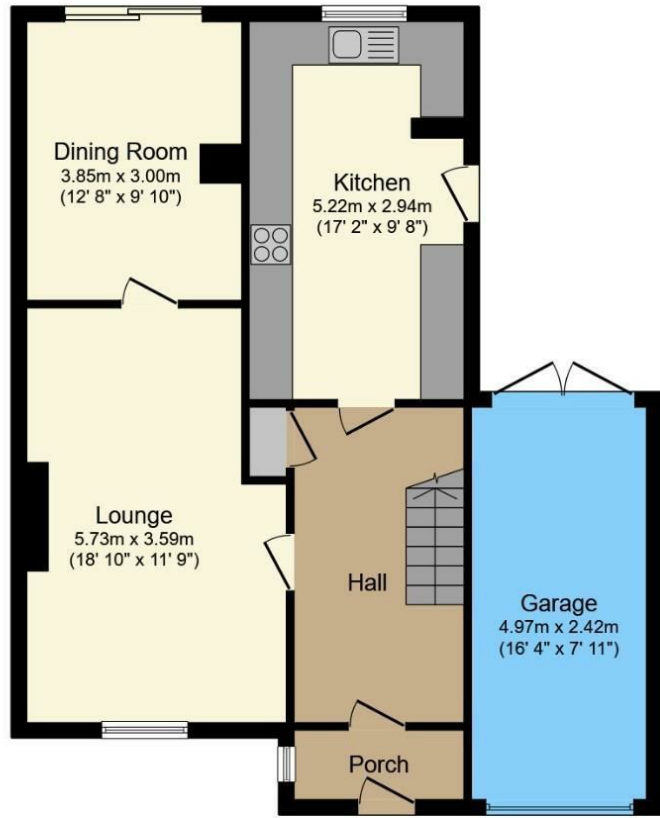
## KEY FEATURES

- LINK-DETACHED
- THREE BEDROOMS
- SOUGHT AFTER LOCATION
- CLOSE TO SCHOOLS
- TRANSPORT LINKS
- MUST VIEW









This floor plan is for illustrative purposes only. It is not drawn to scale. Any measurements, floor areas (including any total floor area), openings and orientation are approximate. No details are guaranteed, they cannot be relied upon for any purpose and they do not form part of any agreement. No liability is taken for any error, omission or misstatement. A party must rely upon its own inspection(s). Powered by [www.focalagent.com](http://www.focalagent.com)

Energy Efficiency Rating	
Current	Potential
	82
68	

Very energy efficient - lower running costs

Very energy efficient - lower running costs

(92 plus) A

(81-91) B

(69-80) C

(55-68) D

(39-54) E

(21-38) F

(1-20) G

Not energy efficient - higher running costs

EU Directive 2002/91/EC

England & Wales

Environmental Impact (CO <sub>2</sub> ) Rating	
Current	Potential

Very environmentally friendly - lower CO<sub>2</sub> emissions

Very environmentally friendly - lower CO<sub>2</sub> emissions

(92 plus) A

(81-91) B

(69-80) C

(55-68) D

(39-54) E

(21-38) F

(1-20) G

Not environmentally friendly - higher CO<sub>2</sub> emissions

EU Directive 2002/91/EC

England & Wales

7 Bore Street, Lichfield, Staffordshire, WS13 6LJ | 01543 419000  
 lichfield@hunters.com | www.hunters.com



A wholly owned part of Hunters Property Group Limited | Registered Address 2 St Stephens Court, St Stephens Road, Bournemouth, Dorset, BH2 6LA | Registered Number: 03947557 England and Wales | VAT No: 180 8978 59

Your privacy is important to us, which is why we will never sell the personal data you provide to us to any third parties.