



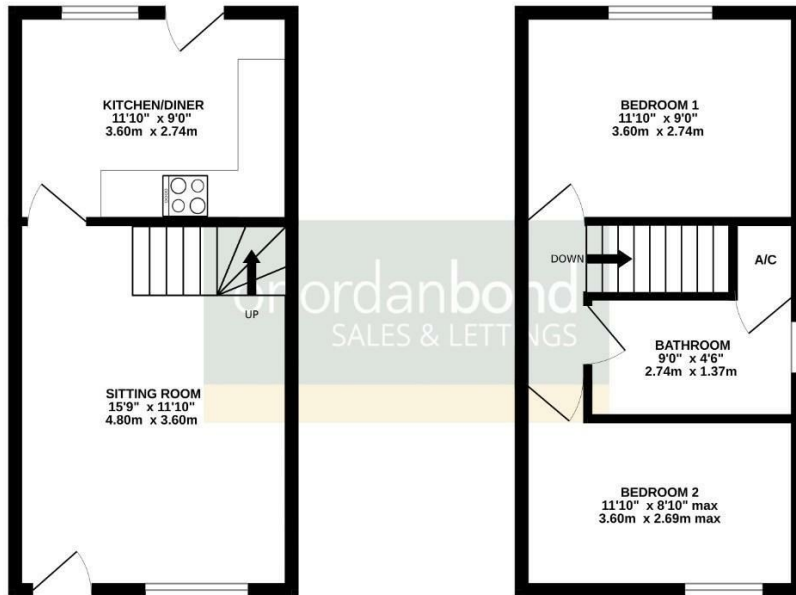
Downsway
East Hunsbury, Northampton

oriordanbond
SALES & LETTINGS



GROUND FLOOR
292 sq.ft. (27.1 sq.m.) approx.

1ST FLOOR
292 sq.ft. (27.1 sq.m.) approx.



TOTAL FLOOR AREA: 583 sq.ft. (54.2 sq.m.) approx.

Whilst every attempt has been made to ensure the accuracy of the floorplans contained herein, measurements of doors, windows, rooms and any other items are approximate and no responsibility is taken for any error, omission or mis-statement. This plan is for illustrative purposes only and should be used as such by any prospective purchaser. The services, systems and appliances shown have not been tested and no guarantee as to their operability or efficiency can be given.
Made with Metreplan 02024

Downsway

East Hunsbury
NN4 0TD

PRICE £228,000

INVESTOR PURCHASE ONLY - A well presented two double bedroom semi-detached property, situated towards the end of a cul-de-sac, in this popular residential area in sought after East Hunsbury. The property is offered for sale with tenants currently in situ.

The accommodation comprises entrance hall, sitting room, kitchen/dining room, two first floor double bedrooms and a family bathroom. Outside are gardens to the front and rear and a driveway providing off road parking leading to a single garage. Further benefits include uPVC double glazing and electric heating. (B/581/S)

Additional information

- Council Tax Band: B
- Energy Efficiency Rating: D

Viewing

Viewing strictly by appointment – details below

Disclaimer

O'Riordan Bond Estate Agents Limited has not tested apparatus, equipment, fittings or services and so cannot verify they are in working order. The buyer is advised to obtain verification from their solicitor or surveyor.

O'Riordan Bond Hunsbury Sales
01604 706007

hunsbury@oriordanbond.co.uk

