



Sundew Court

West Hunsbury, Northampton

oriordanbond
SALES & LETTINGS



Sundew Court

West Hunsbury
NN4 9XH

Price
£499,995

Offered to the market with no onward chain is this well presented three double bedroom detached bungalow occupying an enviable corner plot position within the desirable area of West Hunsbury. This bungalow offers over 1,000 square feet of accommodation.

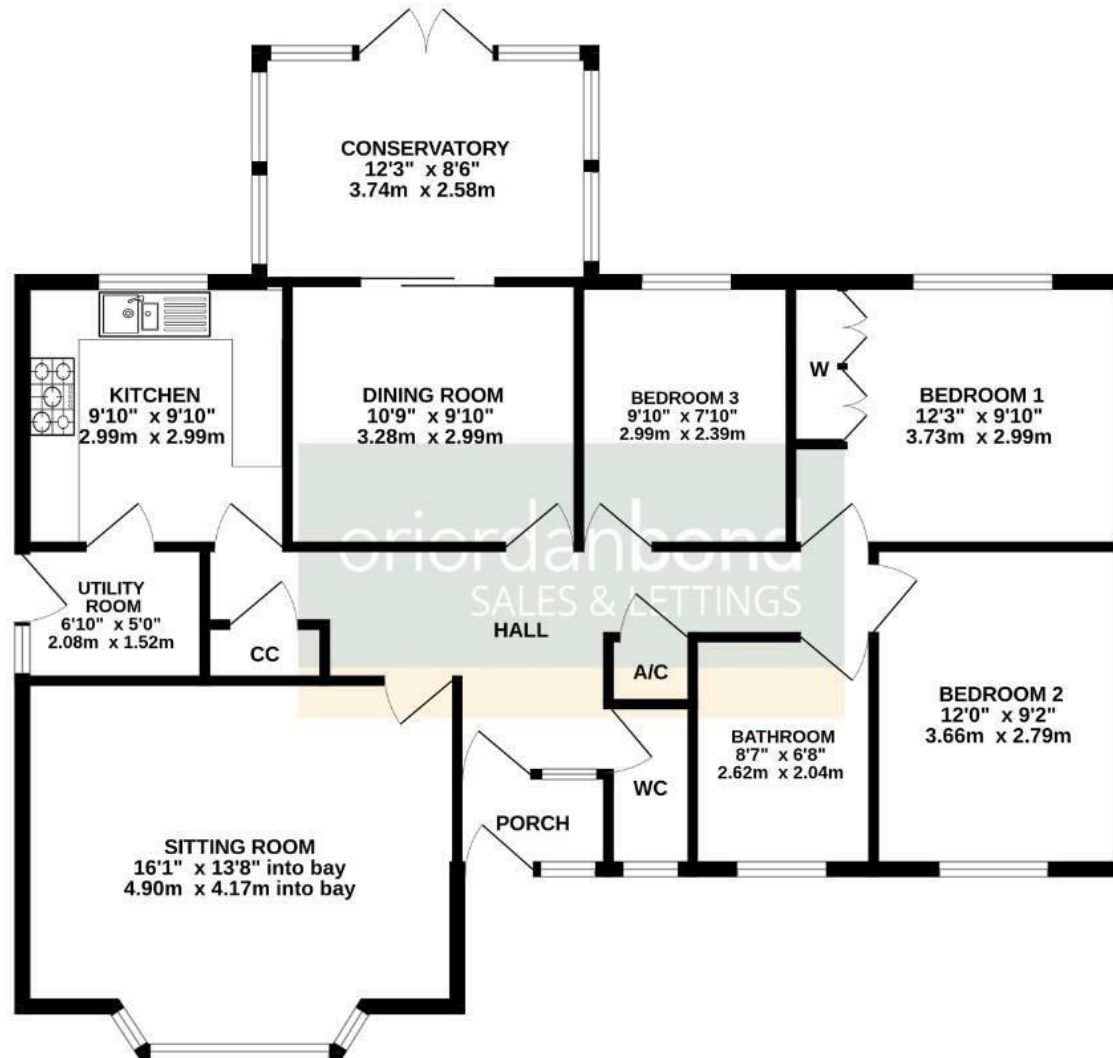
Entrance porch with further door leading to a large entrance hall where you will find access to the loft space, a cloaks cupboard, airing cupboard, cloakroom/WC and doors to all other rooms. There is a spacious sitting room with bay window, a separate dining room with a conservatory off, a fabulous re-fitted kitchen with integrated appliances and granite worktops. There is also a re-fitted utility room, three double bedrooms and a re-fitted four-piece bathroom. Outside, the property sits on a corner plot with lawned areas to the front and side, a double width block paved driveway and a detached double garage with electronically operated doors. The rear garden is mainly laid to lawn, has a patio seating area, fish pond and timber fencing to enclose. Further benefits include uPVC double glazing and gas radiator heating. (A/1083/M)

- Three double bedroom detached bungalow
- Two reception rooms and conservatory
- Re-fitted kitchen and four-piece bathroom
- Gas radiator heating
- Enclosed rear garden
- Double garage with electric doors





GROUND FLOOR
1083 sq.ft. (100.6 sq.m.) approx.



TOTAL FLOOR AREA: 1083 sq.ft. (100.6 sq.m.) approx.

Whilst every attempt has been made to ensure the accuracy of the floorplan contained here, measurements of doors, windows, rooms and any other items are approximate and no responsibility is taken for any error, omission or mis-statement. This plan is for illustrative purposes only and should be used as such by any prospective purchaser. The services, systems and appliances shown have not been tested and no guarantee as to their operability or efficiency can be given.
Made with Metroplan ©2025



Additional information

- Council Tax Band: E
- Energy Efficiency Rating: D

Viewing

Viewing strictly by appointment – details below

Disclaimer

O'Riordan Bond Estate Agents Limited has not tested apparatus, equipment, fittings or services and so cannot verify they are in working order. The buyer is advised to obtain verification from their solicitor or surveyor.

O'Riordan Bond Hunsbury Sales

01604 706007

hunsbury@oriordanbond.co.uk

