



Ramfield Crescent

Collingtree Park, Northampton

oriordanbond
SALES & LETTINGS



Ramfield Crescent

Collingtree Park
NN4 0AH

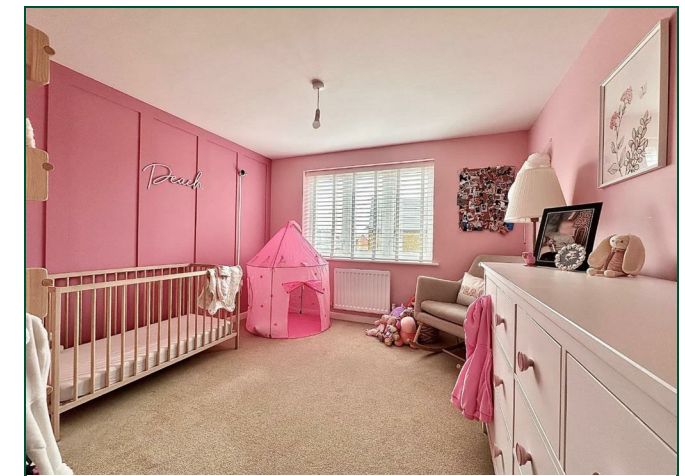
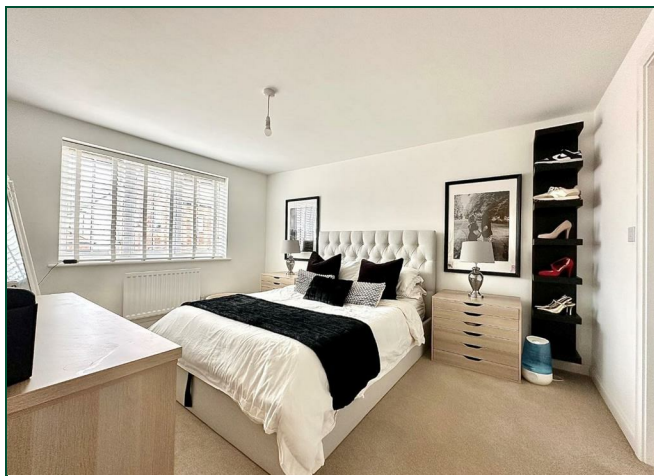
Guide Price
£400,000

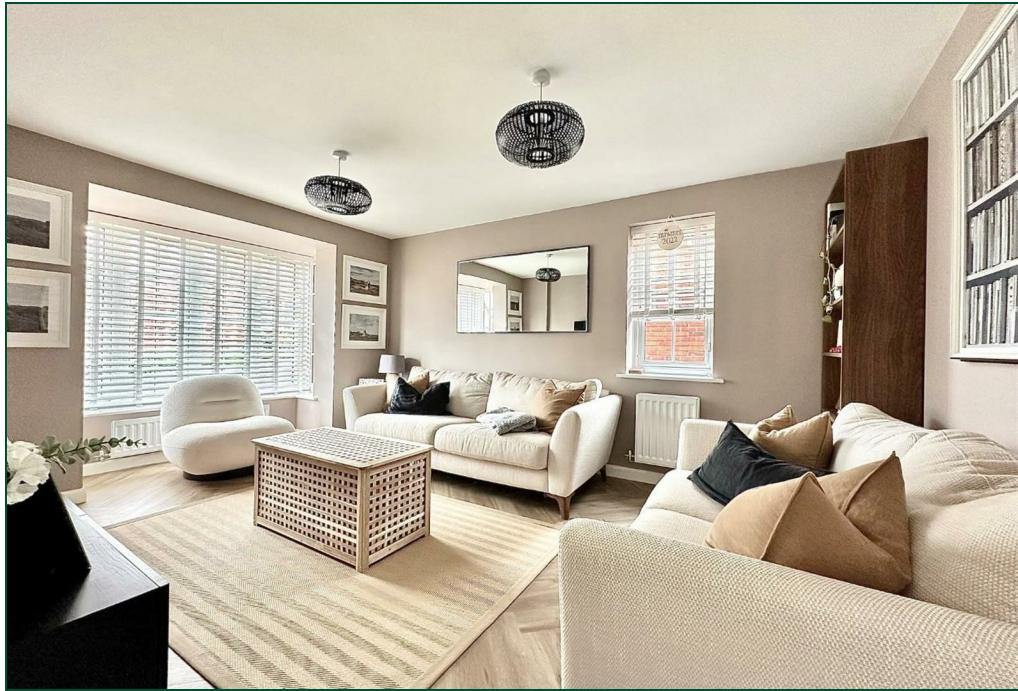
A beautifully presented three bedroom detached family home, situated in the desirable Collingtree Park development, offering over 1,000 square feet of accommodation over two floors.

Spacious 18' entrance hall, a cloakroom/WC, generous sitting room with dual aspect windows, a fabulous 18' kitchen/dining room with fully integrated appliances and a separate utility room. To the first floor are three ample bedrooms with en-suite to the master and a separate family bathroom. Outside, to the front of the property is a small garden and driveway leading to a detached single garage. The rear garden is westerly facing and landscaped with a patio seating area leading to a lawn with timber fencing to enclose. Further benefits include uPVC double glazing and gas radiator heating. (A/1082/S)

AGENTS NOTE - Service Charges apply, please ask the agent for details.

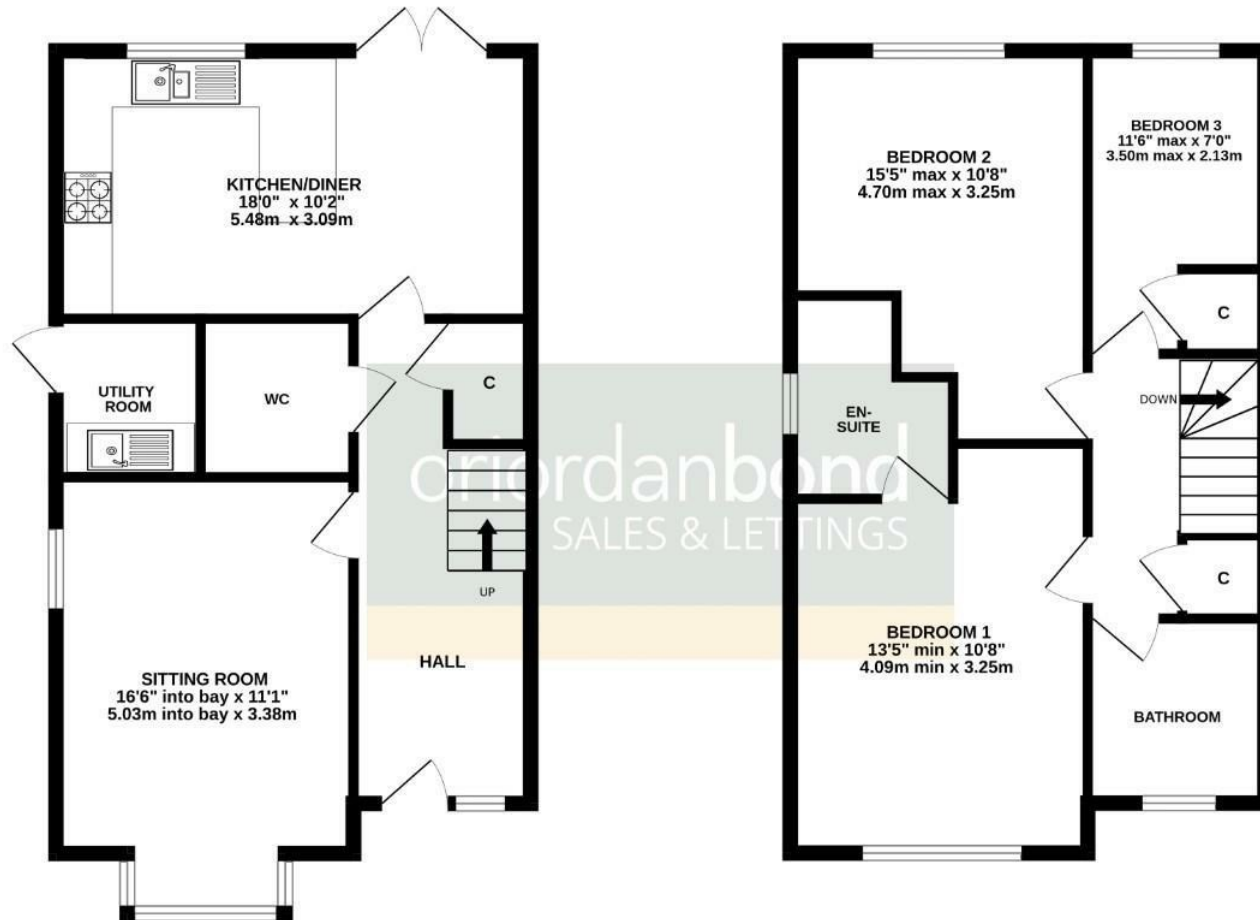
- Beautifully presented three bedroom detached home
- En-suite to master bedroom
- 18' kitchen/dining room with fully integrated appliances
- Gas radiator heating
- Westerly facing landscaped rear garden
- Driveway and detached garage





GROUND FLOOR
548 sq.ft. (50.9 sq.m.) approx.

1ST FLOOR
534 sq.ft. (49.6 sq.m.) approx.



TOTAL FLOOR AREA : 1082 sq.ft. (100.5 sq.m.) approx.

Whilst every attempt has been made to ensure the accuracy of the floorplan contained here, measurements of doors, windows, rooms and any other items are approximate and no responsibility is taken for any error, omission or mis-statement. This plan is for illustrative purposes only and should be used as such by any prospective purchaser. The services, systems and appliances shown have not been tested and no guarantee as to their operability or efficiency can be given.
Made with Metropix ©2025



Additional information

- Council Tax Band: E
- Energy Efficiency Rating: B

Viewing

Viewing strictly by appointment – details below

Disclaimer

O'Riordan Bond Estate Agents Limited has not tested apparatus, equipment, fittings or services and so cannot verify they are in working order. The buyer is advised to obtain verification from their solicitor or surveyor.

O'Riordan Bond Hunsbury Sales

01604 706007

hunsbury@oriordanbond.co.uk

