



Olympia Close

East Hunsbury, Northampton

oriordanbond
SALES & LETTINGS



Olympia Close

East Hunsbury
NN4 0RU

Price
£460,000

An immaculately presented four bedroom detached family home, situated in a desirable cul-de-sac, within the popular area of East Hunsbury. This property offers of circa 1,300 square feet over two floors.

Entrance hall with stairs to the first floor with storage under, a cloakroom/WC, an 18' sitting room with inglenook fireplace and inset multi fuel burner, a fabulous, re-fitted kitchen/dining room with a fully integrated appliances and Quartz surfaces. There is also a separate utility room and a wonderful conservatory with a glass roof and hot/cold air conditioning. To the first floor is a light and airy landing offering access to the loft space, an airing cupboard and doors to four bedrooms, the main bedroom providing fitted wardrobes and an en-suite shower room. There is also a separate family bathroom with a shower over the bath. To the front is a lawned garden and block paved driveway leading to a detached double garage. The rear garden is a generous size, easterly facing and landscaped with a paved patio seating area, lawn, planted borders and timber fencing to enclose. Other benefits are upvc double glazing, gas radiator heating and multi zone under floor heating to the hallway, kitchen and conservatory. (A/1298/M)

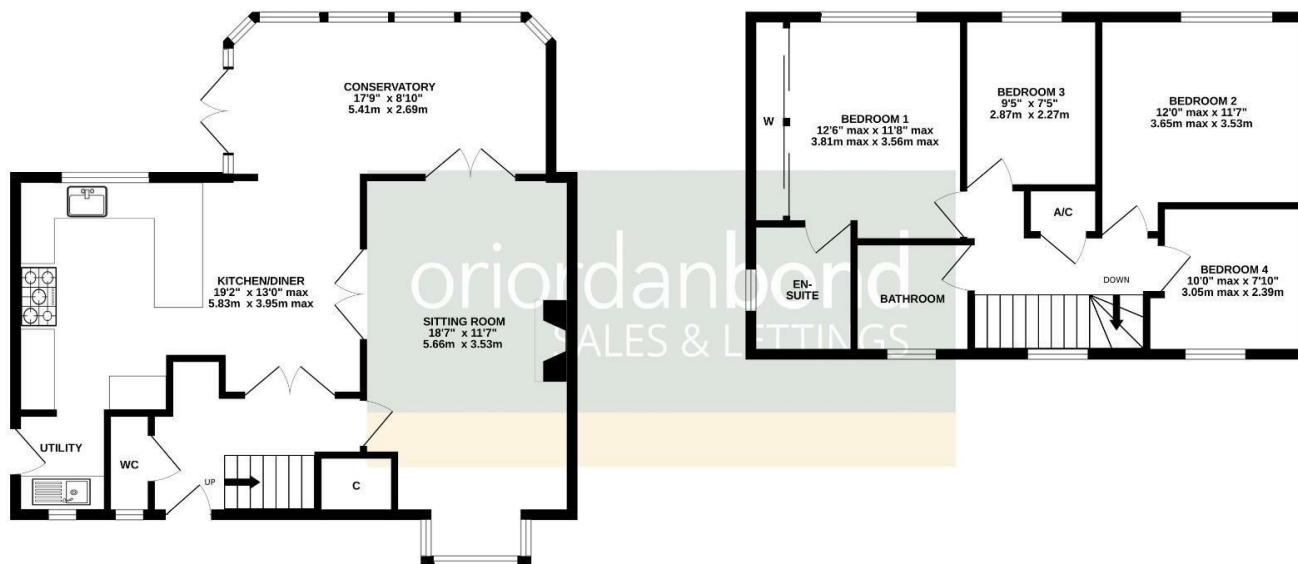
- Four Bedroom Detached
- Refitted Kitchen/Diner
- Conservatory with Air Con
- En-Suite to Main Bedroom
- Front and Rear Gardens
- Double Garage and Driveway





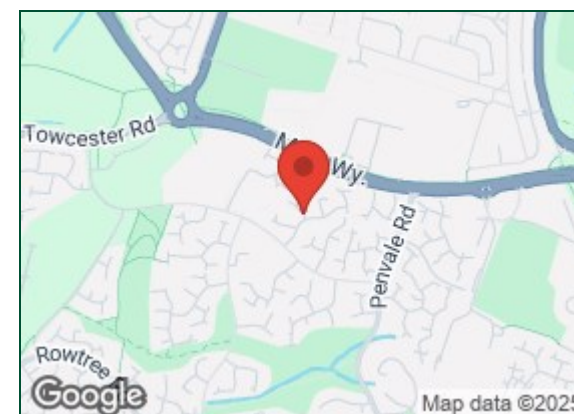
GROUND FLOOR
729 sq.ft. (67.8 sq.m.) approx.

1ST FLOOR
569 sq.ft. (52.8 sq.m.) approx.



TOTAL FLOOR AREA : 1298 sq.ft. (120.6 sq.m.) approx.

Whilst every attempt has been made to ensure the accuracy of the floorplan contained here, measurements of doors, windows, rooms and any other items are approximate and no responsibility is taken for any error, omission or mis-statement. This plan is for illustrative purposes only and should be used as such by any prospective purchaser. The services, systems and appliances shown have not been tested and no guarantee as to their operability or efficiency can be given.
Made with Metropix ©2025



Additional information

- Council Tax Band: E
- Energy Efficiency Rating: E

Viewing

Viewing strictly by appointment – details below

Disclaimer

O'Riordan Bond Estate Agents Limited has not tested apparatus, equipment, fittings or services and so cannot verify they are in working order. The buyer is advised to obtain verification from their solicitor or surveyor.

O'Riordan Bond Hunsbury Sales
01604 706007

hunsbury@oriordanbond.co.uk

