



Stagshaw Close

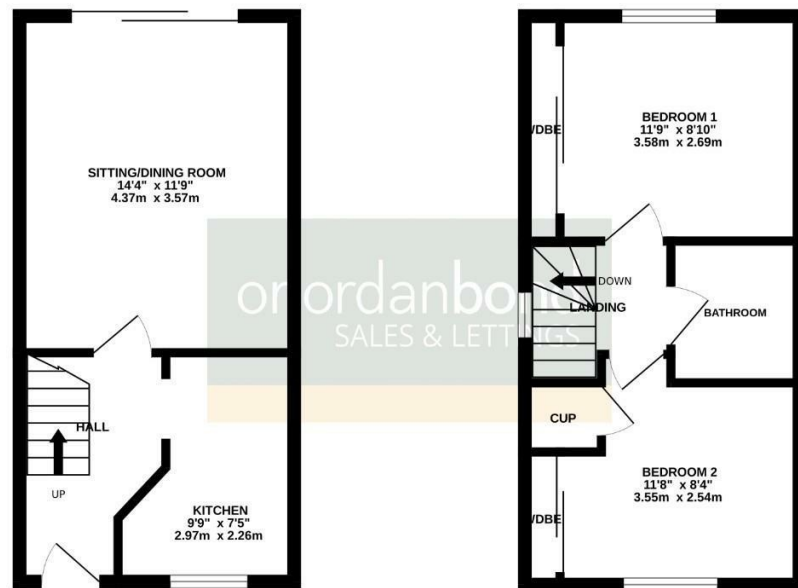
East Hunsbury, Northampton

oriordanbond
SALES & LETTINGS



GROUND FLOOR

1ST FLOOR



TOTAL FLOOR AREA : 566 sq.ft. (52.6 sq.m.) approx.

Whilst every attempt has been made to ensure the accuracy of the floorplan contained here, measurements of doors, windows, rooms and any other items are approximate and no responsibility is taken for any error, omission or mis-statement. This plan is for illustrative purposes only and should be used as such by any prospective purchaser. The services, systems and appliances shown have not been tested and no guarantee as to their operability or efficiency can be given.
Made with Herraige C2025

Stagshaw Close

East Hunsbury

NN4 0WE

PRICE £219,995

A well presented two bedroom terraced property located within the heart of the East Hunsbury estate, close to local amenities and many local surrounding schools.

The accommodation comprises entrance hall, re-fitted kitchen with built-in oven, hob and extractor fan, a sitting room with feature fireplace and sliding patio doors to the rear garden, first floor landing, master bedroom with built-in wardrobes, second double bedroom with built-in wardrobes and a family bathroom with fitted three-piece suite. Outside offers an open plan front garden, an enclosed low maintenance rear garden with decking and artificial lawn and a garage with parking in front. Further benefits include uPVC double glazing and gas radiator heating. (B/566/M)

Additional information

- Council Tax Band: B
- Energy Efficiency Rating: D

Viewing

Viewing strictly by appointment – details below

Disclaimer

O'Riordan Bond Estate Agents Limited has not tested apparatus, equipment, fittings or services and so cannot verify they are in working order. The buyer is advised to obtain verification from their solicitor or surveyor.

O'Riordan Bond Hunsbury Sales

01604 706007

hunsbury@oriordanbond.co.uk

