



# Frosty Hollow

East Hunsbury, Northampton

oriordanbond  
SALES & LETTINGS



# Frosty Hollow

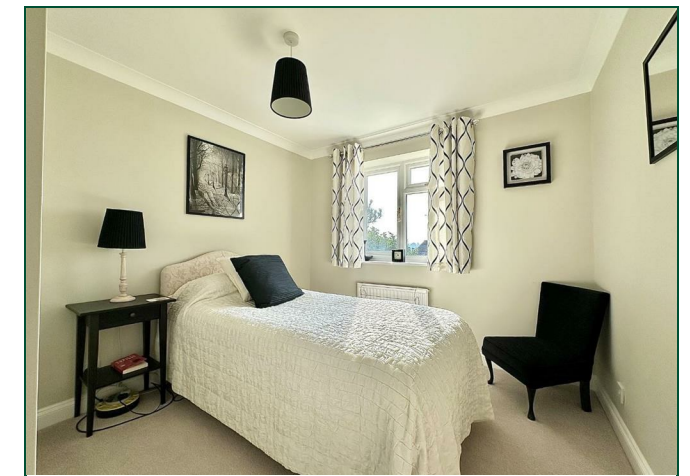
East Hunsbury  
NN4 0UD

Price  
£450,000

Offered to the market with no onward chain is this outstanding four bedroom detached family home, nestled in a desirable cul-de-sac within East Hunsbury. This property has been tastefully modernised by the current owner and provides generous accommodation over two floors.

Entrance hall, a re-fitted cloakroom/WC, a good size sitting room with bay window and feature fireplace, a stunning re-fitted kitchen/dining room with fully integrated appliances, a study/family room and a conservatory with glass roof. To the first floor is access to the loft space, four bedrooms and a fabulous re-fitted shower room. Two of the bedrooms offer fitted wardrobes and the master bedroom has a lovely re-fitted en-suite shower room. Outside is a lawned garden to the front and an imprinted concrete driveway leading to an integral garage with electric door. The rear garden is southerly facing and landscaped with a patio seating area, manicured lawn, planted borders and timber fencing to enclose. Further benefits include uPVC double glazing and gas radiator heating. (A/1535/M)

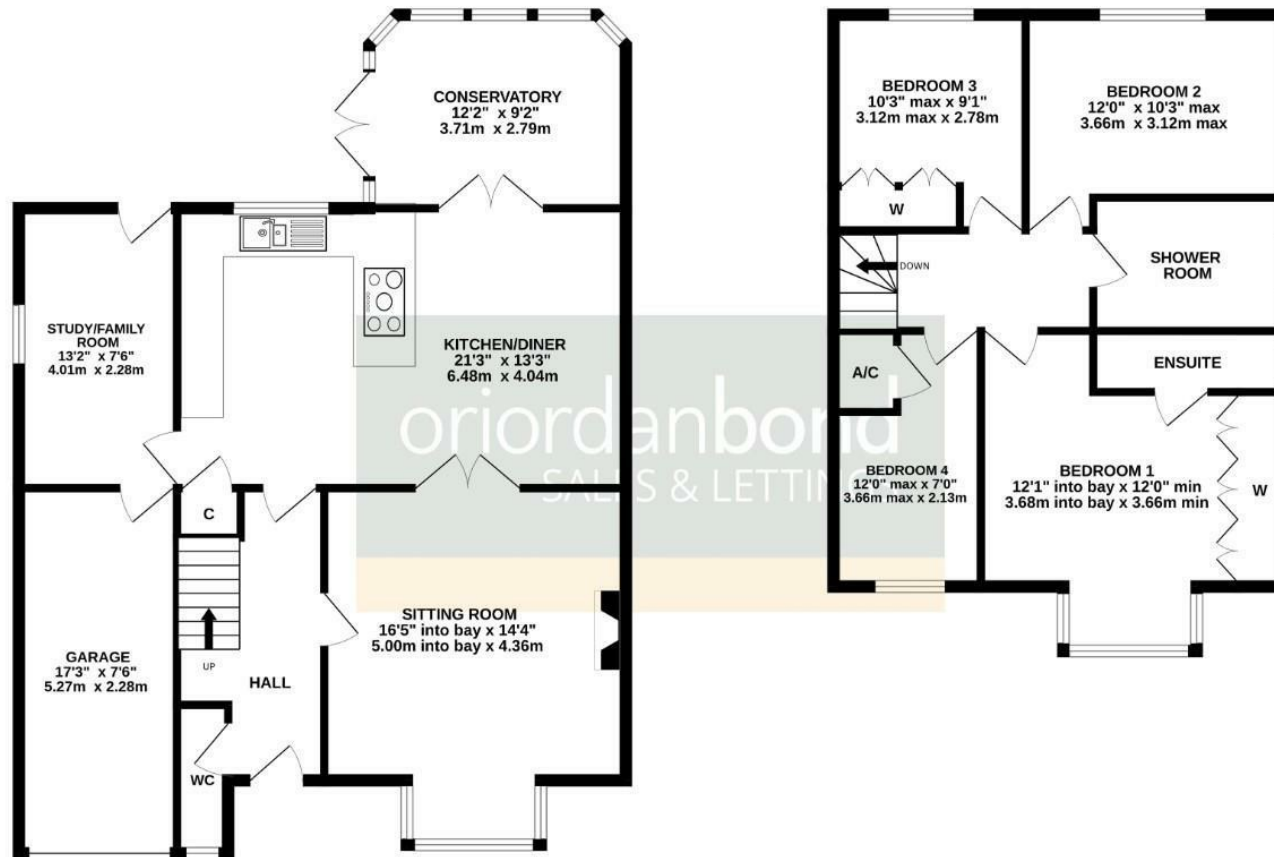
- Outstanding four bedroom detached home
- Re-fitted en-suite to master bedroom
- Stunning re-fitted kitchen/dining room
- Conservatory with glass roof
- South facing landscaped rear garden
- Driveway and garage with electric door





GROUND FLOOR  
939 sq.ft. (87.2 sq.m.) approx.

1ST FLOOR  
596 sq.ft. (55.4 sq.m.) approx.



TOTAL FLOOR AREA : 1535 sq.ft. (142.6 sq.m.) approx.

Whilst every attempt has been made to ensure the accuracy of the floorplan contained here, measurements of doors, windows, rooms and any other items are approximate and no responsibility is taken for any error, omission or mis-statement. This plan is for illustrative purposes only and should be used as such by any prospective purchaser. The services, systems and appliances shown have not been tested and no guarantee as to their operability or efficiency can be given.  
Made with Metropix ©2025



#### Additional information

- Council Tax Band: E
- Energy Efficiency Rating: C

#### Viewing

Viewing strictly by appointment – details below

#### Disclaimer

O'Riordan Bond Estate Agents Limited has not tested apparatus, equipment, fittings or services and so cannot verify they are in working order. The buyer is advised to obtain verification from their solicitor or surveyor.

**O'Riordan Bond Hunsbury Sales**

**01604 706007**

[hunsbury@oriordanbond.co.uk](mailto:hunsbury@oriordanbond.co.uk)

