



Gresham Drive

West Hunsbury, Northampton

oriordanbond
SALES & LETTINGS



Gresham Drive

West Hunsbury
NN4 9SZ

Offers Over
£400,000

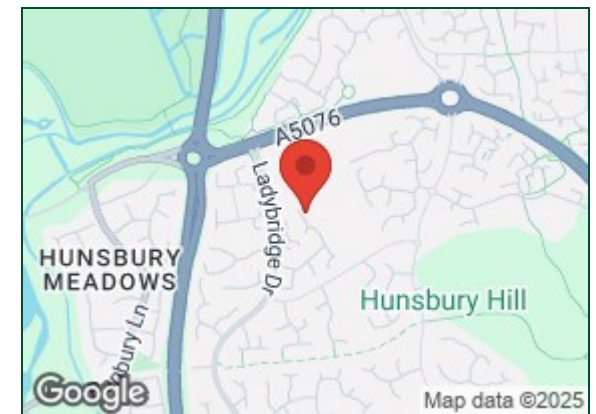
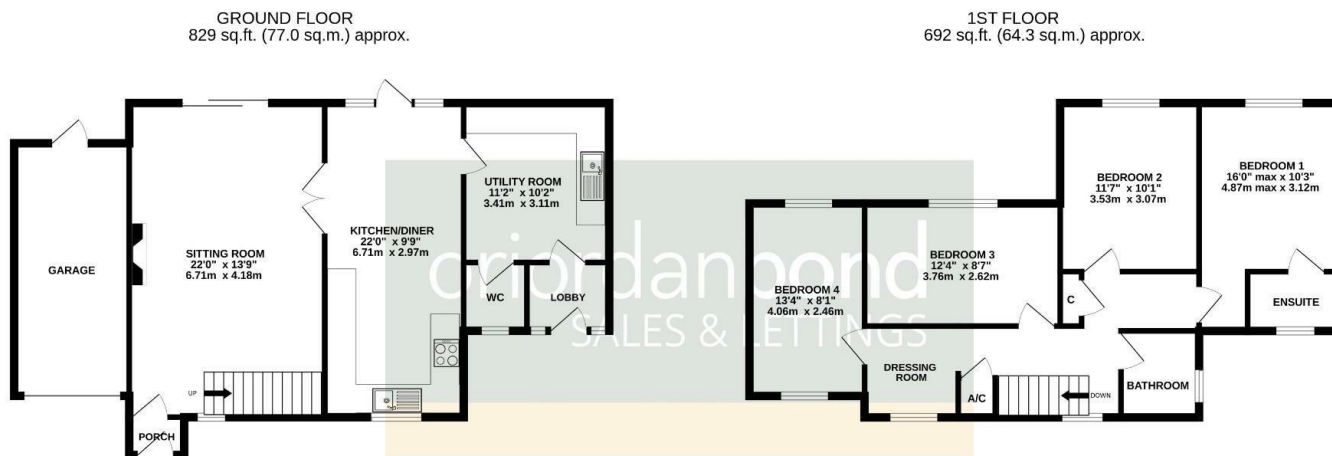
An extended four double bedroom detached family home, situated in a cul-de-sac, within the desirable area of West Hunsbury. This property offers accommodation approaching 1,500 square feet over two floors.

Entrance porch, 22' sitting room with patio doors to the rear garden, a feature fireplace and double doors to a generous kitchen/dining room with integrated appliances and a large, separate utility/laundry room with cloakroom/WC off and lobby. To the first floor are four spacious double bedrooms with en-suite to the master bedroom and a modern family bathroom. Outside is a block paved driveway for several cars to the front and an integral garage. The rear garden is private and backs directly onto woodland with a lawn, patio areas and timber fencing to enclose. Further benefits include uPVC double glazing, gas radiator heating and solar PV panels. (C/1521/M)

- Extended four double bedroom detached
- En-suite to master bedroom
- Generous kitchen/diner with integrated appliances
- Gas radiator heating
- Private rear garden backing onto woodland
- Ample off road parking and integral garage







Additional information

- Council Tax Band: C
- Energy Efficiency Rating: C

Viewing

Viewing strictly by appointment – details below

Disclaimer

O'Riordan Bond Estate Agents Limited has not tested apparatus, equipment, fittings or services and so cannot verify they are in working order. The buyer is advised to obtain verification from their solicitor or surveyor.

O'Riordan Bond Hunsbury Sales

01604 706007

hunsbury@oriordanbond.co.uk

