



# Ravens Croft

East Hunsbury, Northampton

oriordanbond  
SALES & LETTINGS





# Ravens Croft

East Hunsbury  
NN4 0RL

Guide Price  
£525,000

**A beautifully presented four bedroom detached family home, situated in a desirable cul-de-sac, within the popular area of East Hunsbury. This stunning property offers generous accommodation over two floors.**

Entrance hall, cloakroom/WC, good size sitting room with feature fireplace and patio doors to the rear garden, a separate dining room, study and a fantastic kitchen/breakfast room with integrated appliances, quartz work surfaces to include a breakfast bar and a 17' utility room with matching units and surfaces. To the first floor is a spacious landing, four double bedrooms with fitted wardrobes to two rooms, a contemporary en-suite to the master bedroom and a family bathroom. Outside, the property occupies a prominent position with a lawned front garden and double width driveway ample for four cars leading to an attached double garage with two electronically operated doors and an internal personal door to the house. The rear garden is very private and westerly facing with a paved patio seating area, manicured lawn, mature planted borders, mature trees and timber fencing to enclose. (A/1697/M)

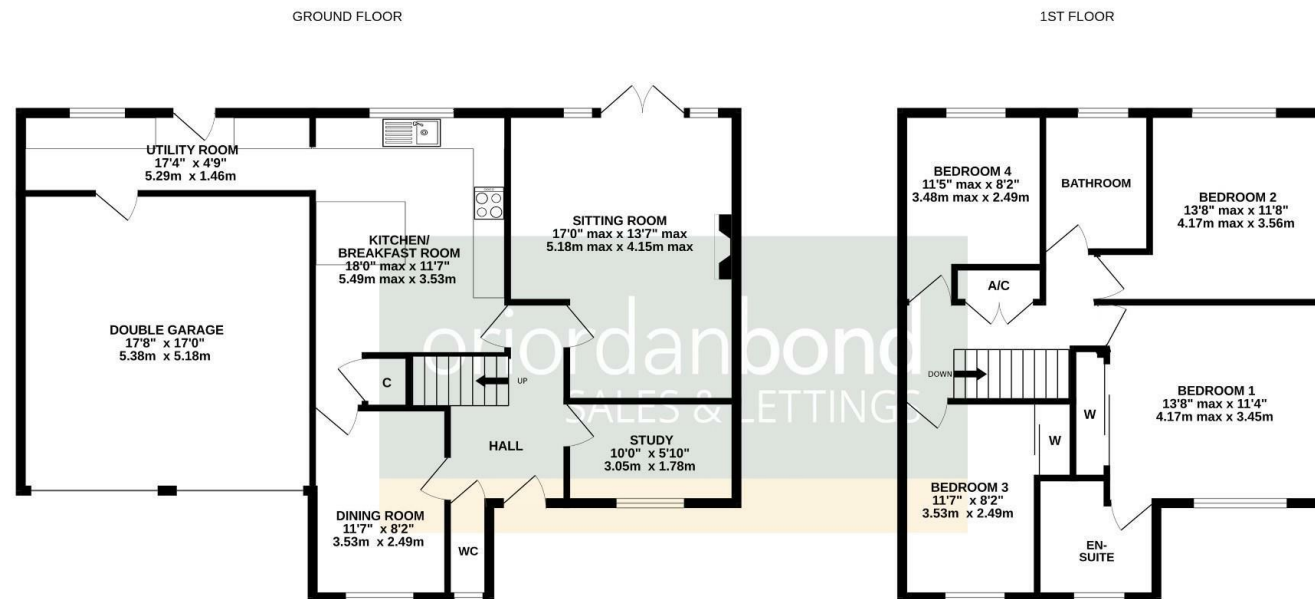
- Beautifully presented four bedroom detached
- En-suite to master bedroom
- Three reception rooms
- Kitchen/breakfast room with integrated appliances
- Westerly facing secluded rear garden
- Ample parking and double garage











TOTAL FLOOR AREA : 1696 sq.ft. (157.6 sq.m.) approx.

Whilst every attempt has been made to ensure the accuracy of the floorplan contained here, measurements of doors, windows, rooms and any other items are approximate and no responsibility is taken for any error, omission or mis-statement. This plan is for illustrative purposes only and should be used as such by any prospective purchaser. The services, systems and appliances shown have not been tested and no guarantee as to their operability or efficiency can be given.  
Made with Metropix ©2025



### Additional information

- Council Tax Band: F
- Energy Efficiency Rating: C

### Viewing

Viewing strictly by appointment – details below

### Disclaimer

O'Riordan Bond Estate Agents Limited has not tested apparatus, equipment, fittings or services and so cannot verify they are in working order. The buyer is advised to obtain verification from their solicitor or surveyor.

**O'Riordan Bond Hunsbury Sales**  
01604 706007

[hunsbury@oriordanbond.co.uk](mailto:hunsbury@oriordanbond.co.uk)

