



Teal Close

West Hunsbury, Northampton

oriordanbond
SALES & LETTINGS





Teal Close

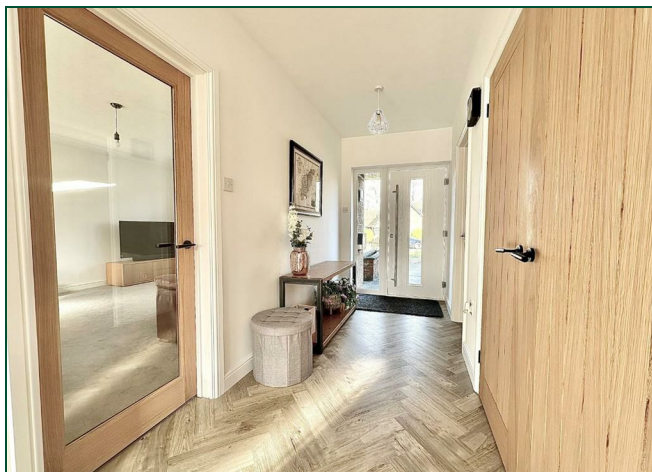
West Hunsbury
NN4 9XF

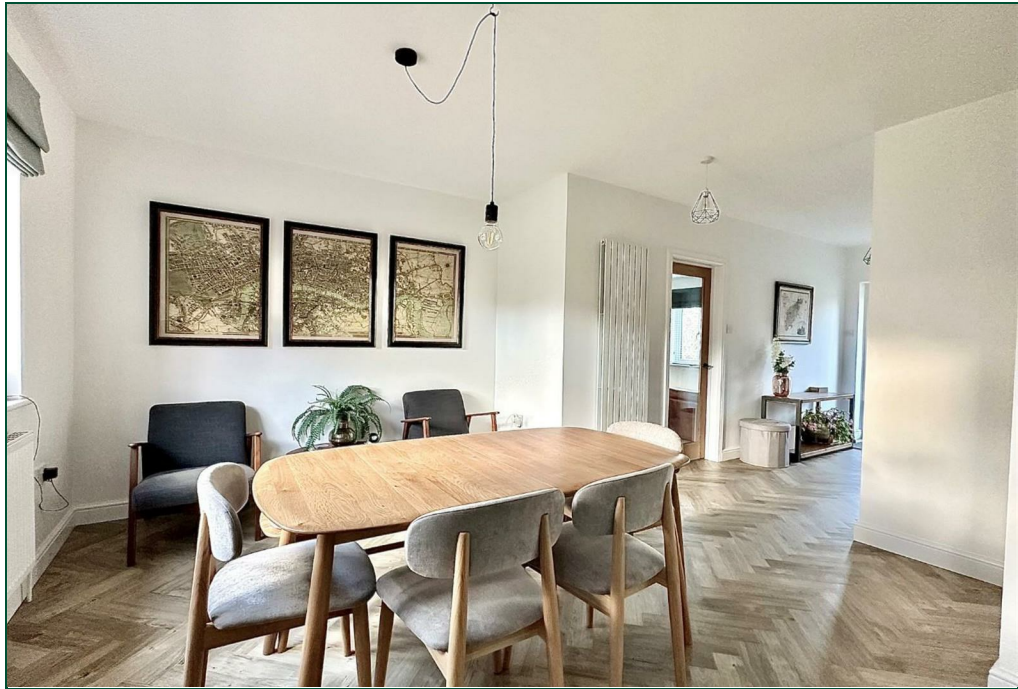
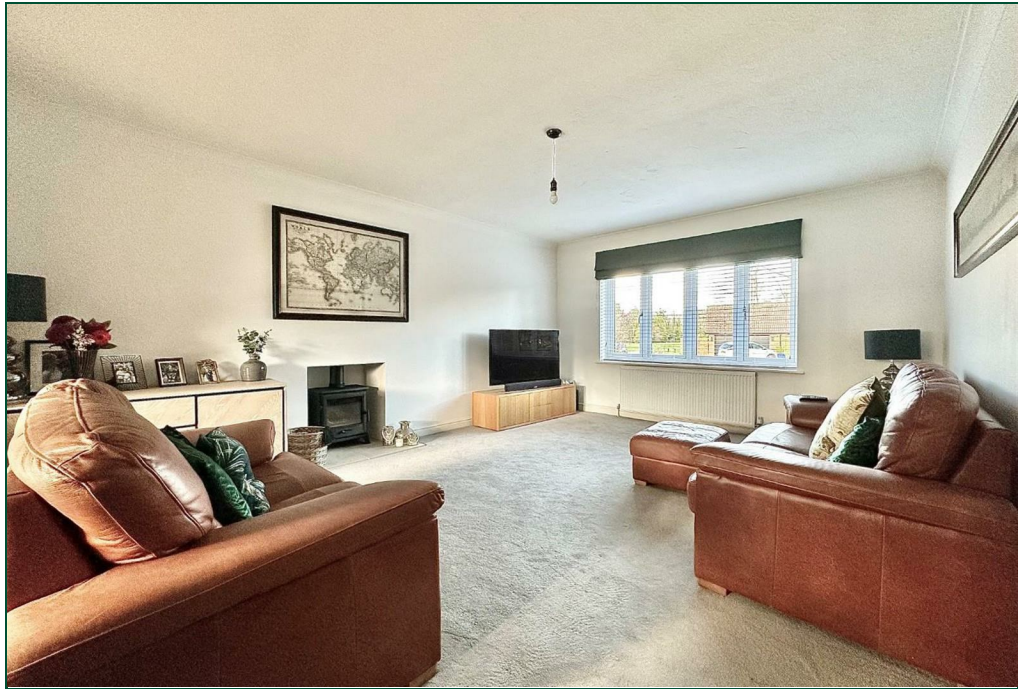
Price
£725,000

An outstanding four bedroom detached bungalow, situated on approximately 0.34 acres, within one of the most desirable roads in West Hunsbury. This property has recently undergone a full renovation and offers spacious and versatile, contemporary accommodation.

Light and airy entrance hall with cloaks cupboard, a re-fitted cloakroom/WC, a door to an inner hallway and all other rooms off. There is a generous sitting room with wood burner, ample space for furniture and patio doors opening to an Alfresco dining area and rear garden. The kitchen and dining room have been combined into one impressive space and re-fitted with a vast range of kitchen units, fully integrated appliances, a dining area and a utility room off. The inner hallway offers two storage cupboards, doors to four bedrooms, a bathroom and access to the garage. All four bedrooms are generous in size with the main bedroom providing a re-fitted contemporary en-suite with large shower enclosure and the family bathroom tastefully re-fitted with a four-piece suite comprising a quadrant shower enclosure, a wonderful free-standing bath, hand basin and WC. Outside, the bungalow sits on an enviable plot, away from the road, with a large lawned front garden and spacious driveway for several cars leading to an attached double garage with workshop area at the rear. The rear garden is private and southerly facing offering a paved patio seating area, an amazing lawned garden with timber fencing to enclose and gated side access. This outstanding property must be viewed to be fully appreciated. (A/2193/L)

- Outstanding four bedroom detached bungalow
- Re-fitted en-suite to master bedroom
- Large re-fitted kitchen/dining room
- Re-fitted four-piece family bathroom
- 0.34 acre plot with private south facing garden
- Ample off road parking and double garage



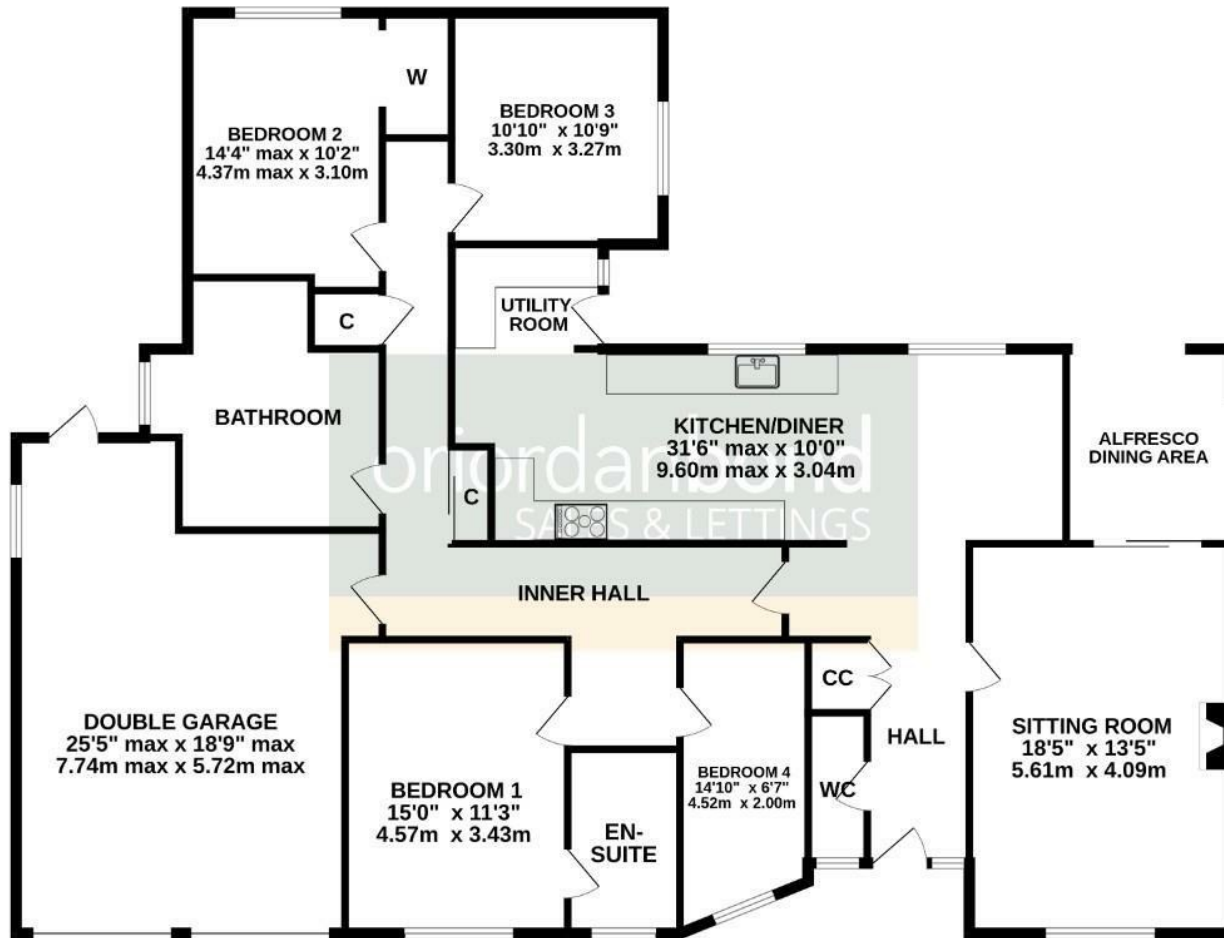








GROUND FLOOR
2193 sq.ft. (203.8 sq.m.) approx.



TOTAL FLOOR AREA : 2193 sq.ft. (203.8 sq.m.) approx.

Whilst every attempt has been made to ensure the accuracy of the floorplan contained here, measurements of doors, windows, rooms and any other items are approximate and no responsibility is taken for any error, omission or mis-statement. This plan is for illustrative purposes only and should be used as such by any prospective purchaser. The services, systems and appliances shown have not been tested and no guarantee as to their operability or efficiency can be given.
Made with Metropix ©2024



Additional information

- Council Tax Band: F
- Energy Efficiency Rating: D

Viewing

Viewing strictly by appointment – details below

Disclaimer

O'Riordan Bond Estate Agents Limited has not tested apparatus, equipment, fittings or services and so cannot verify they are in working order. The buyer is advised to obtain verification from their solicitor or surveyor.

O'Riordan Bond Hunsbury Sales

01604 706007

hunsbury@oriordanbond.co.uk

