



Whistlets Close

West Hunsbury, Northampton

oriordanbond
SALES & LETTINGS



Whistlets Close

West Hunsbury
NN4 9XB

Price
£465,000

Offered to the market with no onward chain is this rarely available three bedroom detached bungalow, situated on a corner plot, in the desirable area of West Hunsbury. This property offers single storey accommodation approaching 1,000 sq. ft.

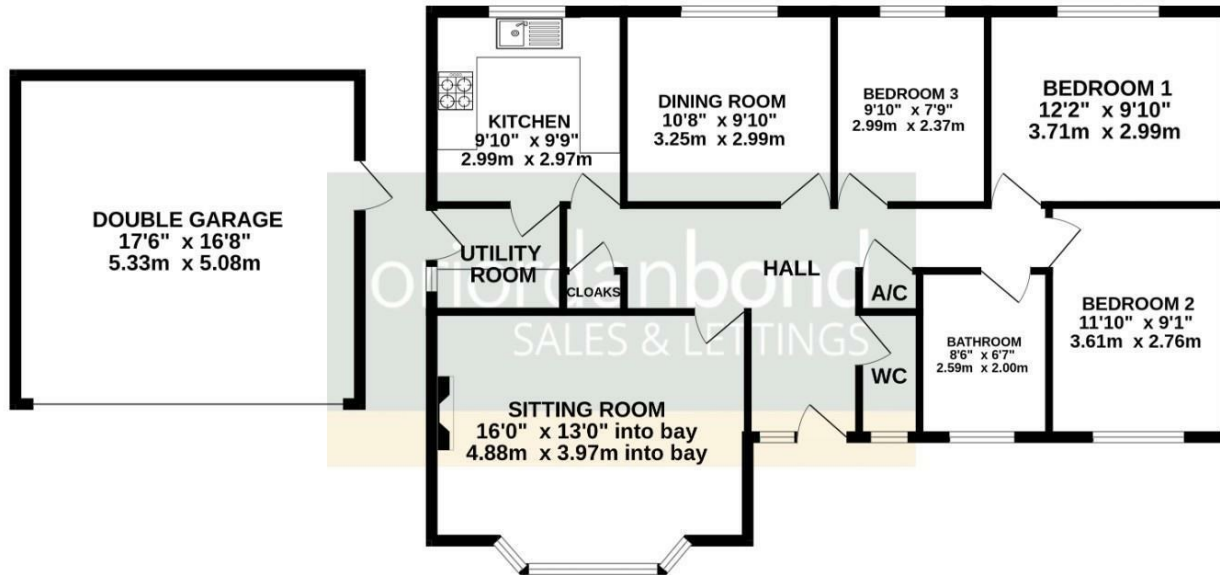
Spacious entrance hall via a double glazed door where you will find access to the loft space, a cloaks cupboard, airing cupboard and doors to all rooms. There is a lovely sitting room with fireplace and bay window, a separate dining room offering space for a dining suite and fitted kitchen adjacent with integrated appliances and separate utility room. There are also three good size bedrooms, a four-piece bathroom with bath and shower cubicle and a separate cloakroom/WC. Benefits include double glazing and gas radiator heating. The bungalow sits on a corner plot with a lawned front garden and block paved driveway for four cars leading to a detached double garage with electronically operated door. The rear garden is private and well maintained with a lawn, planted borders, shrubs/bushes and timber fencing/brick walling to enclose. There is also a side garden with a timber shed that could be extended onto to provide an en-suite to the master bedroom (subject to planning permission.) (B/964/M)

- Rarely available three bedroom detached bungalow
- Two reception rooms
- Four-piece bathroom suite
- Private well maintained rear garden
- Driveway and detached double garage
- No onward chain



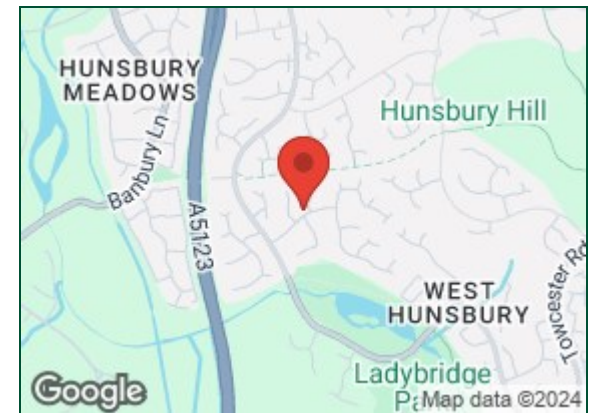


GROUND FLOOR
964 sq.ft. (89.6 sq.m.) approx.



TOTAL FLOOR AREA : 964 sq.ft. (89.6 sq.m.) approx.

Whilst every attempt has been made to ensure the accuracy of the floorplan contained here, measurements of doors, windows, rooms and any other items are approximate and no responsibility is taken for any error, omission or mis-statement. This plan is for illustrative purposes only and should be used as such by any prospective purchaser. The services, systems and appliances shown have not been tested and no guarantee as to their operability or efficiency can be given.
Made with Metropix ©2024



Additional information

- Council Tax Band: E
- Energy Efficiency Rating: D

Viewing

Viewing strictly by appointment – details below

Disclaimer

O'Riordan Bond Estate Agents Limited has not tested apparatus, equipment, fittings or services and so cannot verify they are in working order. The buyer is advised to obtain verification from their solicitor or surveyor.

O'Riordan Bond Hunsbury Sales

01604 706007

hunsbury@oriordanbond.co.uk

