



# Lindisfarne Way

East Hunsbury, Northampton

oriordanbond  
SALES & LETTINGS



## Lindisfarne Way

East Hunsbury  
NN4 0WL

GUIDE PRICE £239,995

A three bedroom end terrace property, located in a quiet cul-de-sac, within the heart of the East Hunsbury estate, close to local amenities. The property requires modernisation throughout and is offered for sale with no onward chain.

Accommodation comprises entrance hall, cloakroom/WC, kitchen, sitting/dining room, three first floor bedrooms and a family bathroom. Outside is lawned frontage and driveway providing off road parking. To the rear is an enclosed low maintenance garden. Further benefits include uPVC double glazing and gas radiator heating. (C/729/M)

### Additional information

- Council Tax Band: B
- Energy Efficiency Rating: C

### Viewing

Viewing strictly by appointment – details below

### Disclaimer

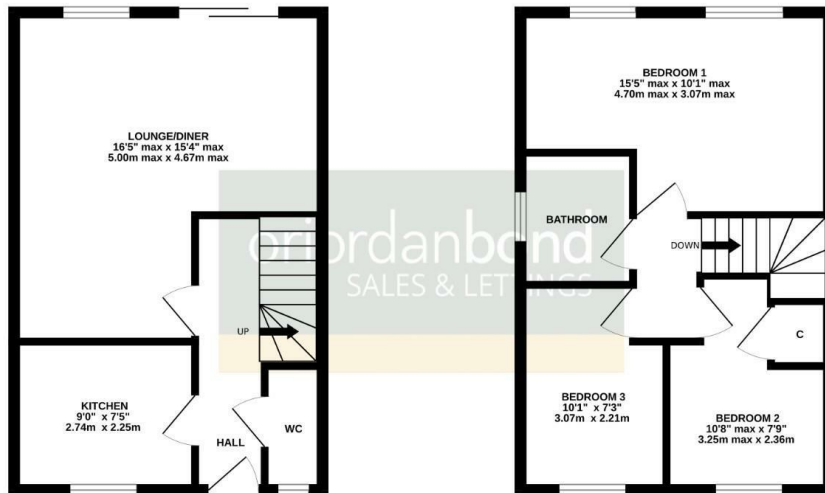
O'Riordan Bond Estate Agents Limited has not tested apparatus, equipment, fittings or services and so cannot verify they are in working order. The buyer is advised to obtain verification from their solicitor or surveyor.

O'Riordan Bond Hunsbury Sales  
01604 706007

[hunsbury@oriordanbond.co.uk](mailto:hunsbury@oriordanbond.co.uk)

GROUND FLOOR  
364 sq.ft. (33.9 sq.m.) approx.

1ST FLOOR  
364 sq.ft. (33.9 sq.m.) approx.



TOTAL FLOOR AREA: 729 sq.ft. (67.7 sq.m.) approx.

Whilst every attempt has been made to ensure the accuracy of the floorplan contained here, measurements of doors, windows, rooms and any other items are approximate and no responsibility is taken for any error, omission or mis-statement. This plan is for illustrative purposes only and should be used as such by any prospective purchaser. The services, systems and appliances shown have not been tested and no guarantee as to their operability or efficiency can be given.  
Made with Metropix 03/24

