



# Ravens Croft

East Hunsbury, Northampton

oriordanbond  
SALES & LETTINGS



## Ravens Croft

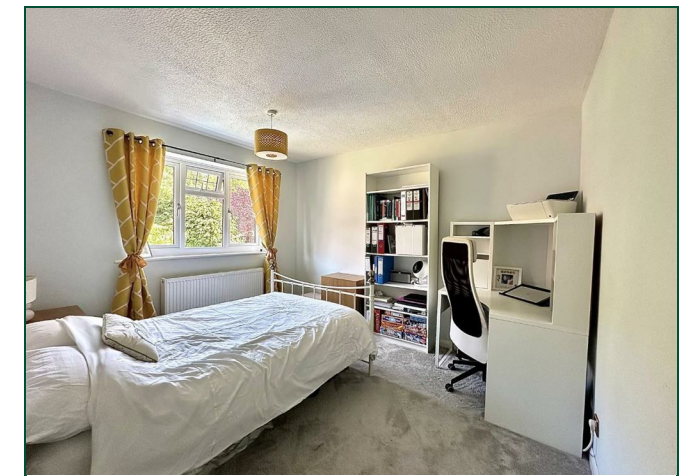
East Hunsbury  
NN4 0RL

Guide Price  
£500,000

**A beautifully presented four bedroom detached family home, situated in a desirable cul-de-sac within East Hunsbury, offering generous and versatile accommodation over two floors.**

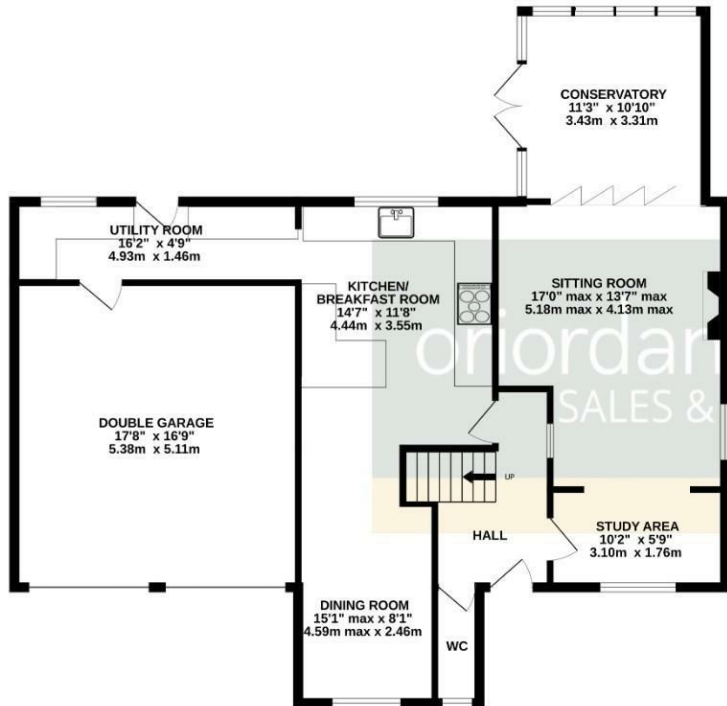
Entrance hall, cloakroom/WC, 17' sitting room with fireplace, an arch to a study area which was previously a formal study and bi-folding doors opening to a fabulous glass roof conservatory. There is a stunning, re-fitted kitchen/breakfast room with integrated appliances and breakfast bar, a large utility room and a dining room. To the first floor are four bedrooms and a contemporary re-fitted four-piece family bathroom. Three of the bedrooms are double rooms, the fourth is a good single and the master bedroom provides an en-suite. Outside are front and side gardens with lawn and planted areas and a double width block paved driveway leading to an attached double garage with two up and over doors and courtesy door to the utility room. The rear garden has been landscaped offering a patio seating area, well maintained lawn and timber fencing to enclose. Further benefits include uPVC double glazing and gas radiator heating. (A/1833/L)

- Beautifully presented four bedroom detached home
- Re-fitted en-suite to master bedroom
- Stunning re-fitted kitchen/breakfast room
- Glass roof conservatory
- Gardens to three aspects with landscaped rear garden
- Driveway and double garage

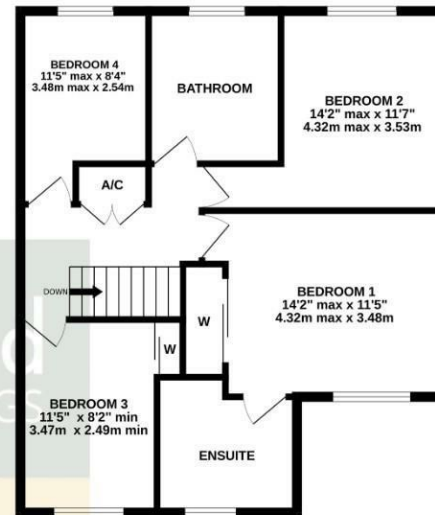




GROUND FLOOR  
1147 sq.ft. (106.6 sq.m.) approx.



1ST FLOOR  
686 sq.ft. (63.7 sq.m.) approx.



TOTAL FLOOR AREA : 1833 sq.ft. (170.2 sq.m.) approx.

Whilst every attempt has been made to ensure the accuracy of the floorplan contained here, measurements of doors, windows, rooms and any other items are approximate and no responsibility is taken for any error, omission or mis-statement. This plan is for illustrative purposes only and should be used as such by any prospective purchaser. The services, systems and appliances shown have not been tested and no guarantee as to their operability or efficiency can be given.  
Made with Metropix ©2024



### Additional information

- Council Tax Band: F
- Energy Efficiency Rating: D

### Viewing

Viewing strictly by appointment – details below

### Disclaimer

O'Riordan Bond Estate Agents Limited has not tested apparatus, equipment, fittings or services and so cannot verify they are in working order. The buyer is advised to obtain verification from their solicitor or surveyor.

O'Riordan Bond Hunsbury Sales

01604 706007

hunsbury@oriordanbond.co.uk

