



Harrier Park

East Hunsbury, Northampton

oriordanbond
SALES & LETTINGS



Harrier Park

East Hunsbury
NN4 0QG

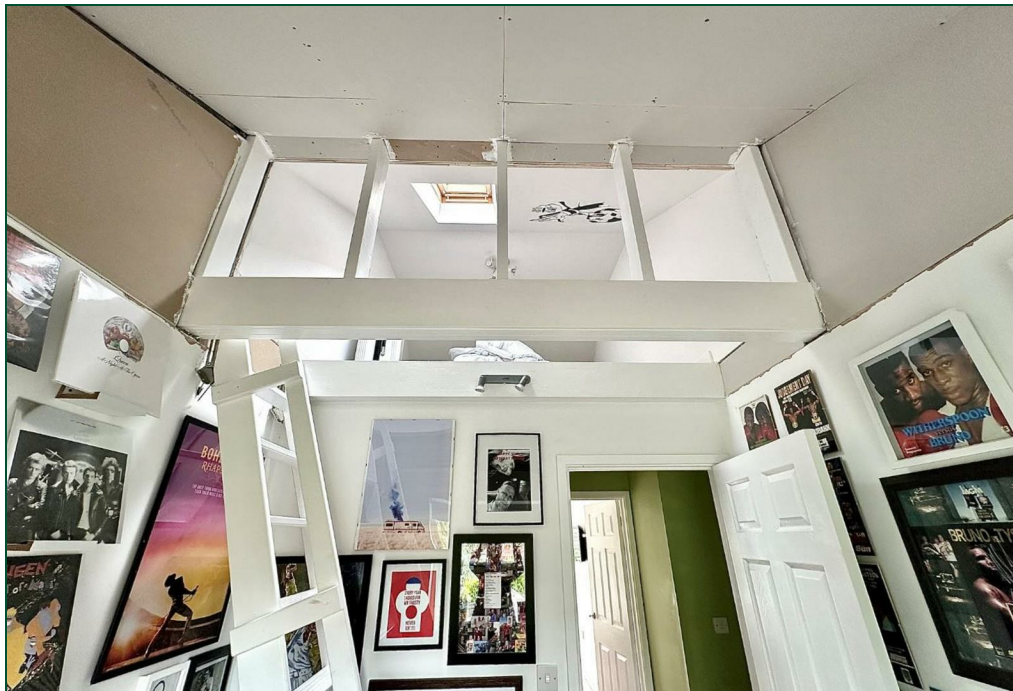
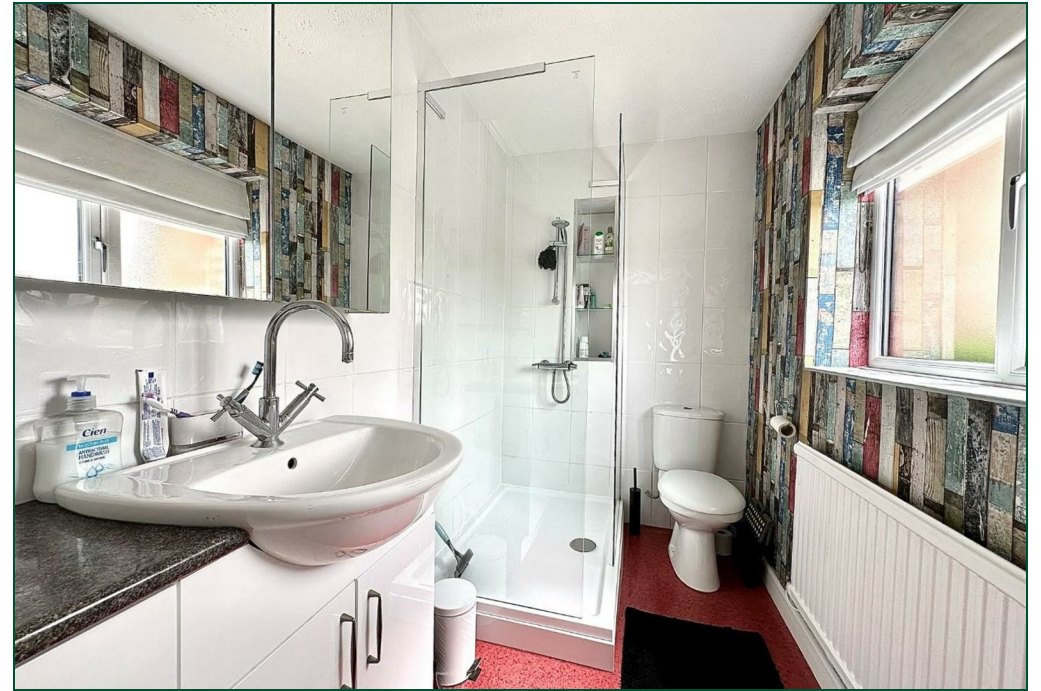
Guide Price
£520,000

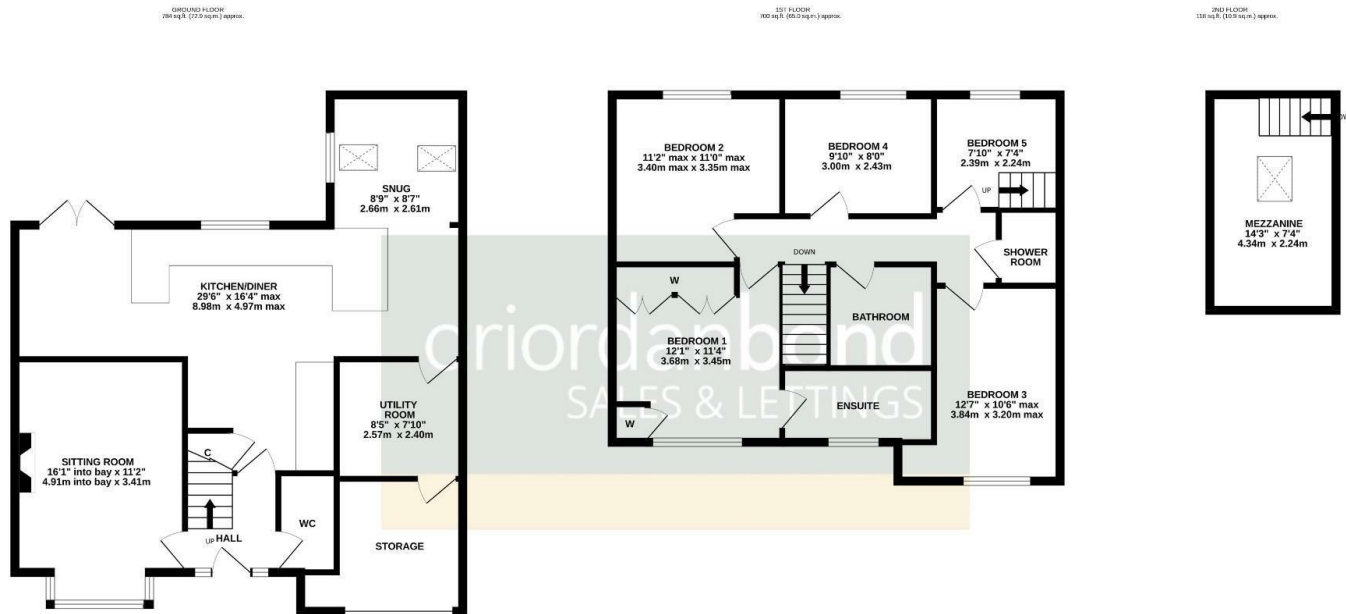
Offered to the market with no onward chain is this immaculate, extended, five bedroom detached family home, situated in a desirable cul-de-sac within East Hunsbury.

The accommodation comprises; entrance hall, cloakroom W/C, sitting room, 29' kitchen diner, utility room and snug/family room. To the first floor are five ample bedrooms with an en-suite to the main bedroom, family bathroom, shower room and mezzanine floor to bedroom five. Outside is a gravelled driveway for several cars and a private, mature rear garden. (A/1602/S)

- Extended Detached Home
- Five Bedrooms
- 29' Kitchen Diner
- Snug/Family Room
- Private Rear Garden
- No Onward Chain







TOTAL FLOOR AREA : 1602 sq.ft. (148.8 sq.m.) approx.

Whilst every attempt has been made to ensure the accuracy of the floorplan contained here, measurements of doors, windows, rooms and any other items are approximate and no responsibility is taken for any error, omission or mis-statement. This plan is for illustrative purposes only and should be used as such by any prospective purchaser. The services, systems and appliances shown have not been tested and no guarantee as to their operability or efficiency can be given.
 Made with Metropix ©2024



Additional information

- Council Tax Band: D
- Energy Efficiency Rating: C

Viewing

Viewing strictly by appointment – details below

Disclaimer

O’Riordan Bond Estate Agents Limited has not tested apparatus, equipment, fittings or services and so cannot verify they are in working order. The buyer is advised to obtain verification from their solicitor or surveyor.

O’Riordan Bond Hunsbury Sales

01604 706007

hunsbury@oriordanbond.co.uk

