



# Hedge End

East Hunsbury, Northampton

oriordanbond  
SALES & LETTINGS





## Hedge End

East Hunsbury  
NN4 0SW

Price  
£399,995

**A unique detached family home which has been extended by the current owners to provide generous accommodation over three floors, situated in a cul-de-sac, within the popular area of East Hunsbury.**

Accommodation comprises porch, hallway, cloakroom/WC, sitting room, dining room, 16' kitchen with integrated appliances and a conservatory. To the first floor are stairs to the second floor, four bedrooms and a modern family bathroom. To the second floor is a master bedroom with en-suite and dressing room off. Outside, to the front is a block paved driveway for up to three cars, lawned side garden and an integral garage with electric door. The rear garden is private and southerly facing, has a paved patio area, lawn and timber fencing to enclose. Further benefits include double glazing and gas radiator heating. (B/1678/M)

- Extended five bedroom detached home
- En-suite and dressing room to master bedroom
- Two reception rooms and conservatory
- Private south facing rear garden
- Driveway and integral garage with electric door
- No Chain

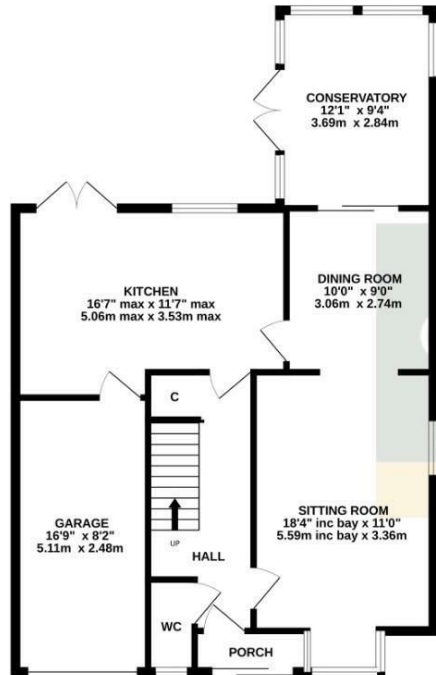




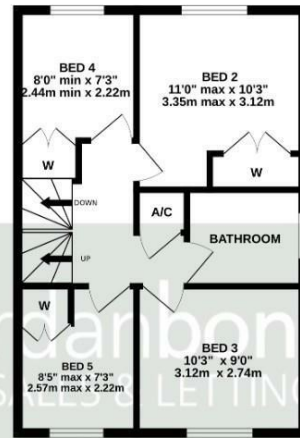




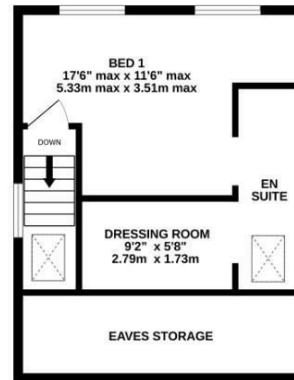
GROUND FLOOR  
832 sq.ft. (77.3 sq.m.) approx.



1ST FLOOR  
452 sq.ft. (42.0 sq.m.) approx.



2ND FLOOR  
394 sq.ft. (36.6 sq.m.) approx.



TOTAL FLOOR AREA : 1678 sq.ft. (155.9 sq.m.) approx.

Whilst every attempt has been made to ensure the accuracy of the floorplan contained here, measurements of doors, windows, rooms and any other items are approximate and no responsibility is taken for any error, omission or mis-statement. This plan is for illustrative purposes only and should be used as such by any prospective purchaser. The services, systems and appliances shown have not been tested and no guarantee as to their operability or efficiency can be given.  
 Made with Metropix ©2024



### Additional information

- Council Tax Band: D
- Energy Efficiency Rating: D

### Viewing

Viewing strictly by appointment – details below

### Disclaimer

O'Riordan Bond Estate Agents Limited has not tested apparatus, equipment, fittings or services and so cannot verify they are in working order. The buyer is advised to obtain verification from their solicitor or surveyor.

O'Riordan Bond Hunsbury Sales

01604 706007

hunsbury@oriordanbond.co.uk

