



**Riverstone Way**  
Hunsbury Meadows, Northampton

**oriordanbond**  
SALES & LETTINGS



## Riverstone Way

Hunsbury Meadows  
NN4 9QW

GUIDE PRICE £260,000

An immaculately presented three bedroom family home situated in the popular area of Hunsbury Meadows. This stylish property offers accommodation over two floors.

Entrance porch, sitting room with bay window, modern kitchen/dining room with integrated appliances, three good size bedrooms and a family bathroom. Outside, to the front is a spacious block paved driveway for several cars leading to an integral garage. The rear garden has been completely landscaped with a porcelain patio leading to raised decked areas and enclosed by timber fencing. Further benefits include uPVC double glazing and gas radiator heating with a recently re-fitted combination boiler. (A/884/M)

### Additional information

- Council Tax Band: C
- Energy Efficiency Rating: C

### Viewing

Viewing strictly by appointment – details below

### Disclaimer

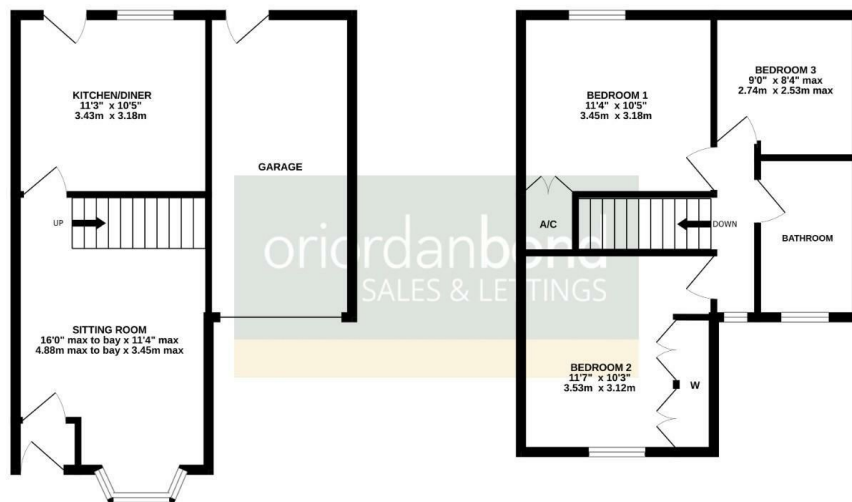
O'Riordan Bond Estate Agents Limited has not tested apparatus, equipment, fittings or services and so cannot verify they are in working order. The buyer is advised to obtain verification from their solicitor or surveyor.

O'Riordan Bond Hunsbury Sales  
01604 706007

[hunsbury@oriordanbond.co.uk](mailto:hunsbury@oriordanbond.co.uk)

GROUND FLOOR  
451 sq.ft. (41.9 sq.m.) approx.

1ST FLOOR  
433 sq.ft. (40.2 sq.m.) approx.



TOTAL FLOOR AREA: 884 sq.ft. (82.1 sq.m.) approx.

Whilst every attempt has been made to ensure the accuracy of the floorplan contained here, measurements of doors, windows, rooms and any other items are approximate and no responsibility is taken for any error, omission or mis-statement. This plan is for illustrative purposes only and should be used as such by any prospective purchaser. The services, systems and appliances shown have not been tested and no guarantee as to their operability or efficiency can be given.  
Made with Metropix 5/2024

