



10 St Clements Close, Ardsley, Barnsley, S71 5DD

Offers In The Region Of £170,000

There is so much potential with this amazing family home which is sat on a large corner plot in a quiet cul de sac. This well proportioned three bed semi detached property is in the sought after area of Ardsley. It is in immaculate condition throughout with light and spacious rooms.

The property briefly comprises of the entrance hallway with storage cupboard, living room and dining room, kitchen and detached garage to the ground floor. With Three bedrooms and the bathroom to the first floor.

This property would suit first time buyer and families among just a few.

The location is ideal for local walks, schools and access to both the M1 and A1 motorways.

LOUNGE



A lovely light and spacious room with a bay window and archway into the dining room. A gas fire sits to the chimney breast and the room is accessed from the hallway.

DINING AREA



To the back of the property and from the lounge is the dining area which has a sliding patio door onto the garden.

KITCHEN



A superb range of wall and base units provide ample storage, having light work surfaces fitted with the sink being just below the window. The rear entrance door leads out to the side of the property and rear garden.

GARDEN



Being on a corner plot, this amazing garden has three mature lawn areas which are separated with patch for access around the area. With a patio just outside of the patio dining door and several plant and paved areas.

The garage to the side adds additional storage or parking and the front driveway will easily accommodate two to three vehicles.

BATHROOM



A lovely size is this family bathroom which has the toilet, bath and sink in a traditional style and in amazing condition.

BEDROOM ONE



A large double bedroom having been recently re-plastered and decorated with a grey carpet.

BEDROOM TWO



An even larger bedroom with lots of space and being to the front of the property.

BEDROOM THREE



A lovely single bedroom with a built in storage cupboard.

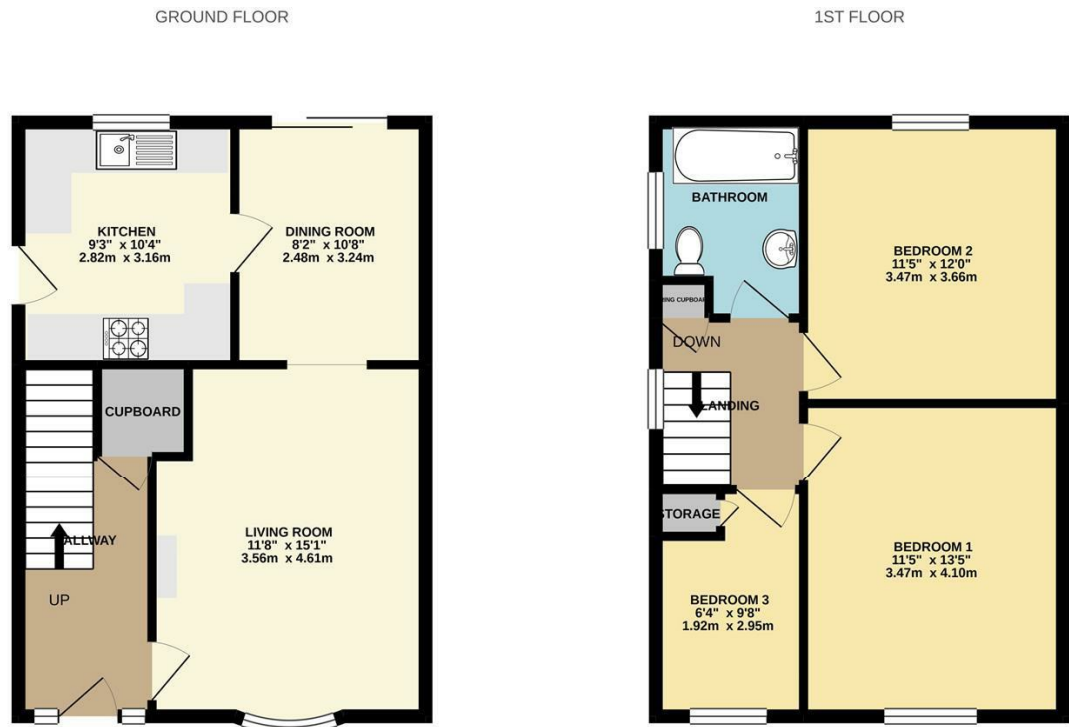


ATTIC ROOM



An amazing storage room with a Velux window and fully boarded, decorated and carpeted. Accessed through a pull down ladder.

Floor Plan



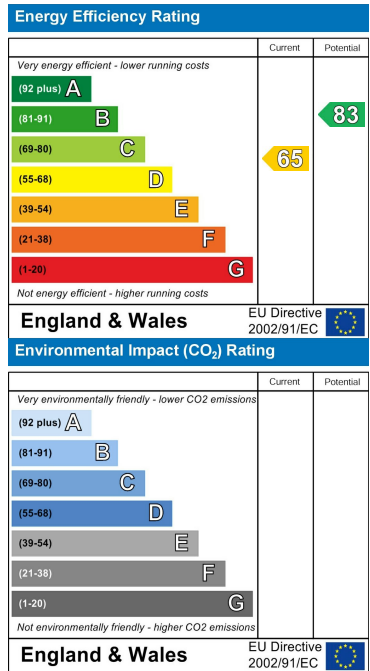
Whilst every attempt has been made to ensure the accuracy of the floorplan contained here, measurements of doors, windows, rooms and any other items are approximate and no responsibility is taken for any error, omission or mis-statement. This plan is for illustrative purposes only and should be used as such by any prospective purchaser. The services, systems and appliances shown have not been tested and no guarantee as to their operability or efficiency can be given.
Made with Metropix ©2021

Area Map



These particulars, whilst believed to be accurate are set out as a general outline only for guidance and do not constitute any part of an offer or contract. Intending purchasers should not rely on them as statements of representation of fact, but must satisfy themselves by inspection or otherwise as to their accuracy. No person in this firms employment has the authority to make or give any representation or warranty in respect of the property.

Energy Efficiency Graph



www.merryweathers.co.uk

Merryweathers (Barnsley) Limited 8 Regent Street, Barnsley, S70 2EJ

Tel: 01226 730850 E-mail: barnsley@merryweathers.co.uk

Offices also at: Rotherham, Doncaster, Mexborough & Maltby

Registered Office: 47 Moorgate Street, Rotherham, S60 2EY
Registered in England and Wales No. 6679044

