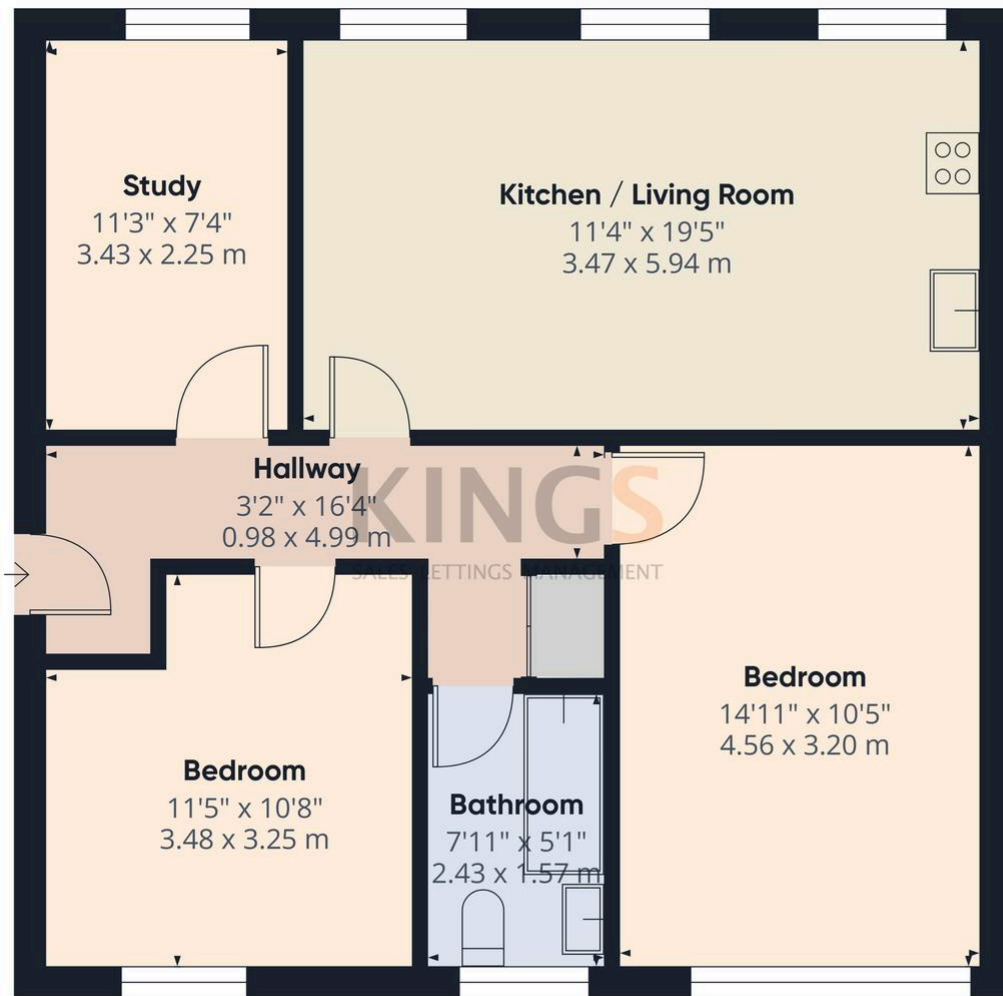


Flat 6, Leighton House 33-37 Darkes Lane, Potters Bar

£1,700 pcm

THIRD FLOOR APARTMENT • TWO DOUBLE BEDROOMS • SPACIOUS LIVING ROOM • OPEN PLAN KITCHEN • MODERN BATHROOM • STUDY/DRESSING ROOM • MOMENTS FROM TRAIN STATION • UNFURNISHED • AVAILABLE AUGUST •
EPC RATING - C

KINGS
SALES LETTINGS MANAGEMENT



KINGS
SALES LETTINGS MANAGEMENT

Approximate total area⁽¹⁾
702 ft²
65.3 m²

(1) Excluding balconies and terraces

While every attempt has been made to ensure accuracy, all measurements are approximate, not to scale. This floor plan is for illustrative purposes only.

Calculations are based on RICS IPMS 3C standard.

GIRAFFE360

You can include any text here. The text can be modified upon generating your brochure.

