

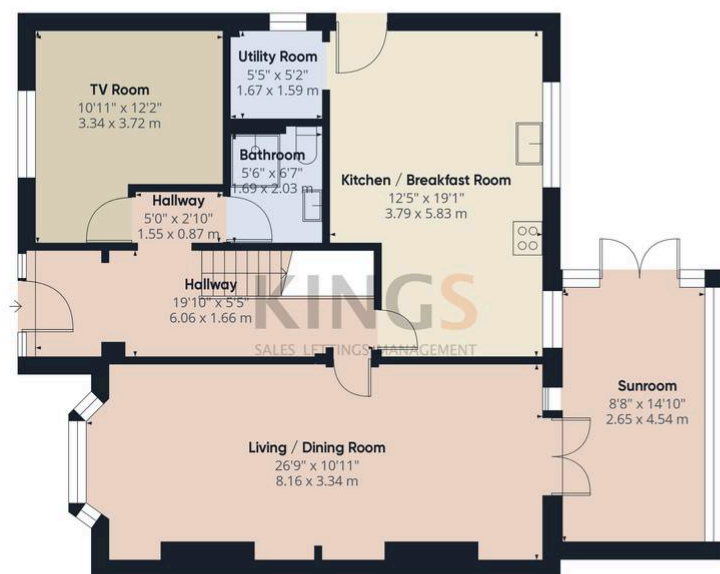


Great North Road, Welwyn Garden City

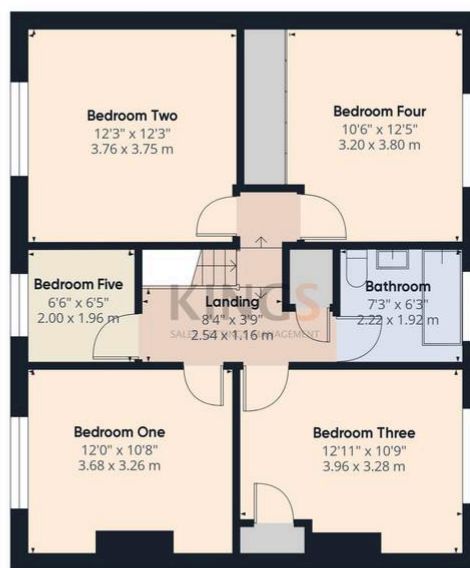
£750,000 Freehold

SEMI DETACHED • FIVE BEDROOMS • THROUGH LOUNGE/DINING ROOM • SUN LOUNGE • KITCHEN / BREAKFAST ROOM
 • PARKING FOR FIVE/SIX CARS • WEST FACING REAR GARDEN OVERLOOKING FIELD • COMPLETE CHAIN ABOVE •
 FREEHOLD • EPC RATING - TBC

KINGS
 SALES LETTINGS MANAGEMENT



Ground Floor



Floor 1

Approximate total area⁽¹⁾

1686.39 ft²

156.67 m²

(1) Excluding balconies and terraces

While every attempt has been made to ensure accuracy, all measurements are approximate, not to scale. This floor plan is for illustrative purposes only.

Calculations were based on RICS IPMS 3C standard. Please note that calculations were adjusted by a third party and therefore may not comply with RICS IPMS 3C.

GIRAFFE360

