

Sandifield, Hatfield

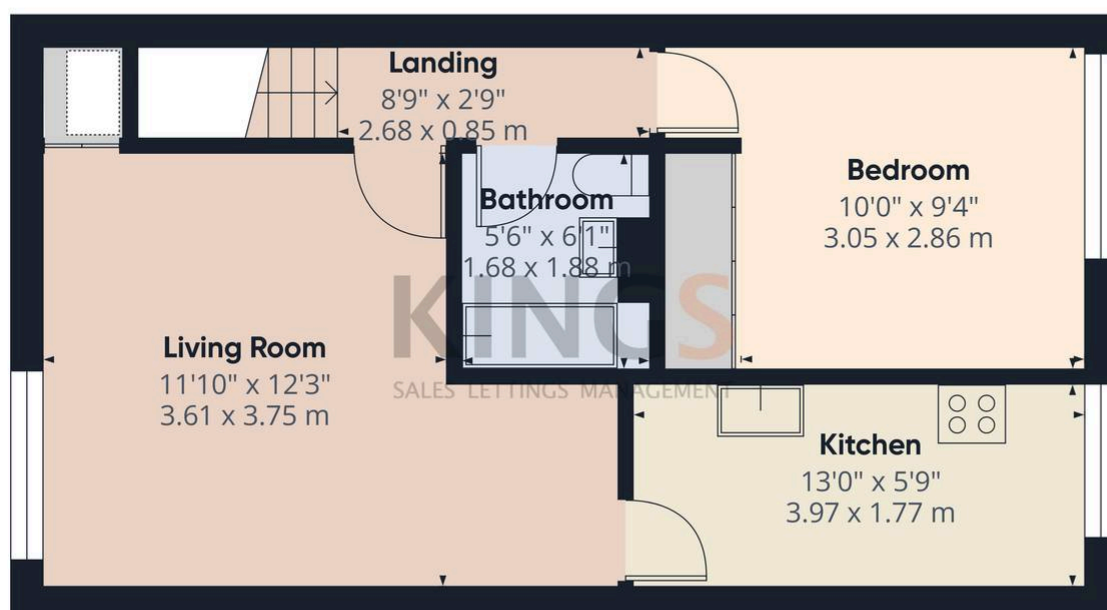
£210,000 Leasehold

FIRST FLOOR MAISONETTE • ONE DOUBLE BEDROOM • LIVING/DINING ROOM • FITTED KITCHEN • BATHROOM • UN-ALLOCATED OFF STREET PARKING • CONVENIENT FOR AMENITIES • CHAIN FREE • LEASEHOLD • EPC RATING - C

KINGS
SALES LETTINGS MANAGEMENT



Ground Floor



Floor 1

Approximate total area⁽¹⁾
462.83 ft²
43 m²

(1) Excluding balconies and terraces

While every attempt has been made to ensure accuracy, all measurements are approximate, not to scale. This floor plan is for illustrative purposes only.

Calculations were based on RICS IPMS 3C standard. Please note that calculations were adjusted by a third party and therefore may not comply with RICS IPMS 3C.

GIRAFFE360

