



Flat, 10 Ashley Court, Hatfield – AL10 0RW

£175,000 Leasehold

GROUND FLOOR APARTMENT • DIRECT GARDEN ACCESS • TWO BEDROOMS • LOUNGE • NEW KITCHEN • WET ROOM
• RESIDENTS LOUNGE • WARDEN ASSISTED BLOCK • LEASEHOLD • EPC RATING – TBC

KINGS
SALES LETTINGS MANAGEMENT



A very well presented ground floor retirement flat with direct garden access. The property benefits from a brand new fitted kitchen, reception room opening onto its own garden area, two bedrooms, wet room, residents lounge and kitchen, laundry room and on site warden. The development is situated within minutes walk of the town centre and it's abundance of amenities including GP surgeries, pharmacies, cafes and shops.

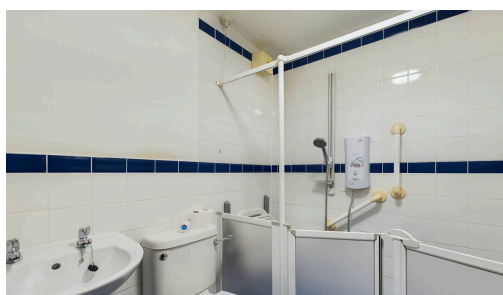
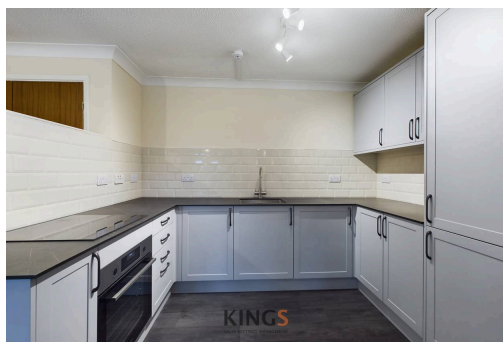


Council Tax band: TBD

Tenure: Leasehold

EPC Energy Efficiency Rating: C

EPC Environmental Impact Rating:
D





Approximate total area⁽¹⁾
569.73 ft²
52.93 m²

(1) Excluding balconies and terraces

While every attempt has been made to ensure accuracy, all measurements are approximate, not to scale. This floor plan is for illustrative purposes only.

Calculations are based on RICS IPMS 3C standard.

GIRAFFE360

