



Maisonette, 33 Wood Common

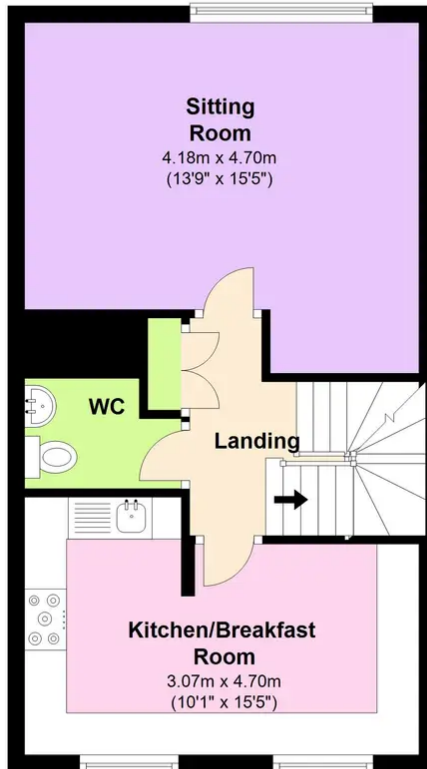
£1,550 pcm Leasehold

MAISONETTE • THREE BEDROOMS • SPACIOUS LIVING ROOM • KITCHEN/DINER • MODERN BATHROOM • SEPARATE W/C • CLOSE TO AMENITIES • UNFURNISHED • AVAILABLE AUGUST • EPC RATING - C

KINGS
SALES LETTINGS MANAGEMENT

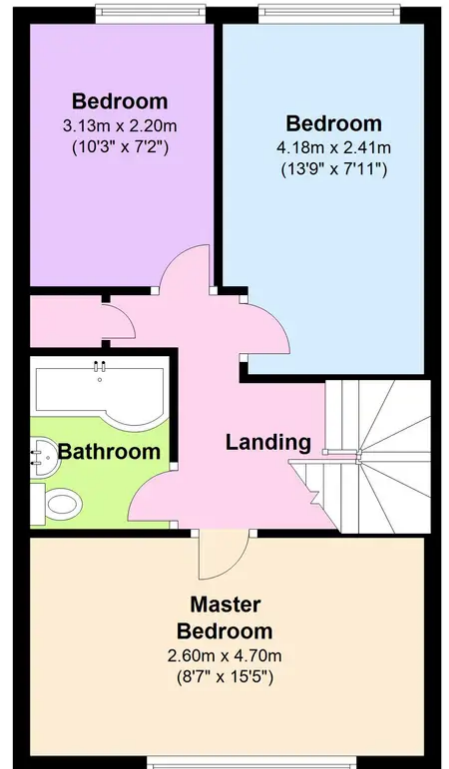
First Floor

Approx. 41.0 sq. metres (441.6 sq. feet)



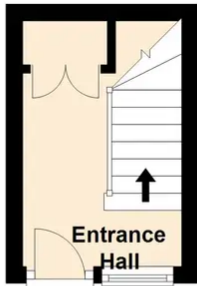
Second Floor

Approx. 41.0 sq. metres (441.6 sq. feet)



Ground Floor

Approx. 5.6 sq. metres (59.8 sq. feet)



Total area: approx. 87.6 sq. metres (942.9 sq. feet)

You can include any text here. The text can be modified upon generating your brochure.

