



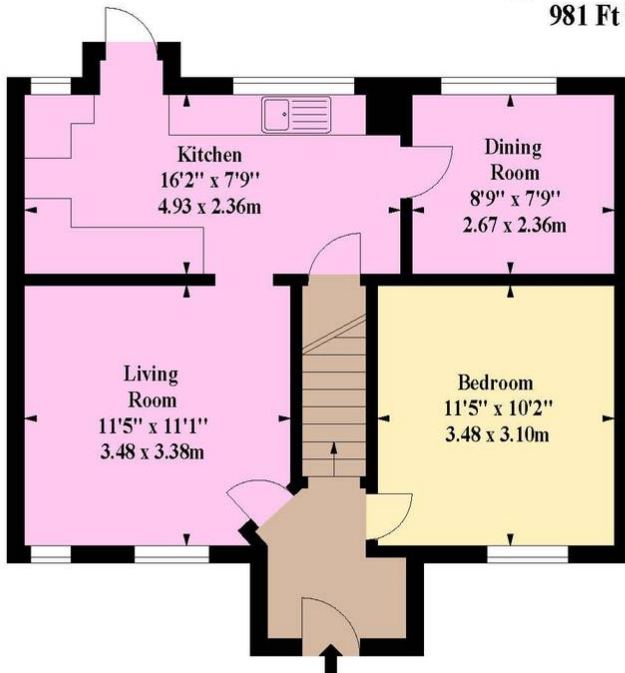
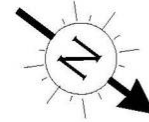
Furzen Crescent, Hatfield

£360,000 Freehold

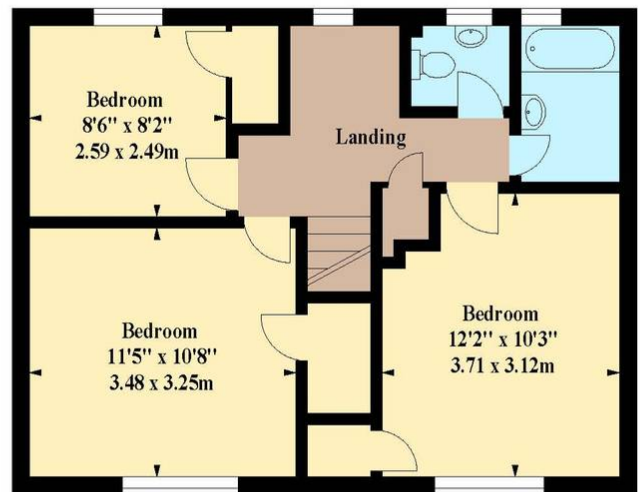
MID TERRACE HOUSE • THREE/FOUR BEDROOMS • MODERN KITCHEN • LIVING ROOM • DINING ROOM/BEDROOM FOUR
• SOUTH WEST GARDEN • POTENTIAL TO EXTEND (STPP) • EPC RATING - C

KINGS
SALES LETTINGS MANAGEMENT

**Furzen Crescent,
Hatfield, AL10**
Approx. Gross Internal Area *
981 Ft² - 91.13 M²



Ground Floor



First Floor

Whilst every attempt has been made to ensure the accuracy of the floor plan contained here, measurements of doors, windows, rooms and any other items are approximate and no responsibility is taken for any error, omission or mis-statement. This plan is for illustrative purposes only and should be used as such by any prospective purchaser. The services, systems and appliances shown have not been tested and no guarantee as to their operability or efficiency can be given

