



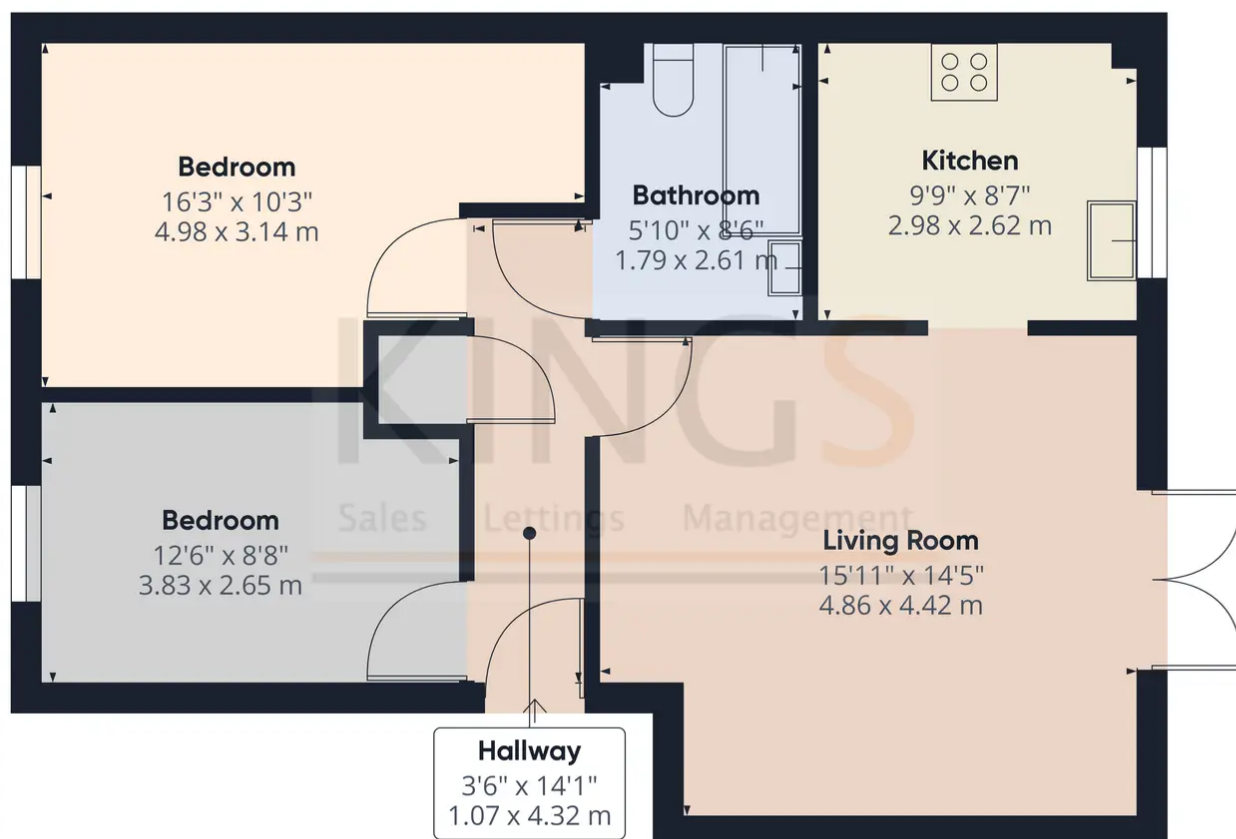
## St. Lukes Court, Hatfield

£135,000 Leasehold

GROUND FLOOR FLAT • TWO DOUBLE BEDROOMS • SPACIOUS LIVING ROOM • SEPARATE KITCHEN • ALLOCATED & VISITOR PARKING • CLOSE TO AMENITIES & TRAIN STATION • SHARED OWNERSHIP • LEASEHOLD • CHAIN FREE • EPC RATING - C

# KINGS

Sales Lettings Management



Approximate total area<sup>(1)</sup>  
674.39 ft<sup>2</sup>  
62.65 m<sup>2</sup>

(1) Excluding balconies and terraces

While every attempt has been made to ensure accuracy, all measurements are approximate, not to scale. This floor plan is for illustrative purposes only.

GIRAFFE360

