



Crawford Road, Hatfield - AL10 0PF

£475,000 Freehold

SEMI DETACHED HOUSE • THREE BEDROOMS • SPACIOUS LIVING ROOM • MODERN KITCHEN • DINING ROOM/SNUG • SOUTH-WEST FACING REAR GARDEN • DRIVEWAY • CLOSE TO STATION • FREEHOLD • EPC RATING - TBC

KINGS

Sales Lettings Management



KINGS
Sales Lettings Management



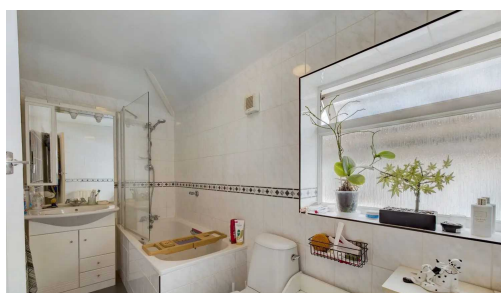
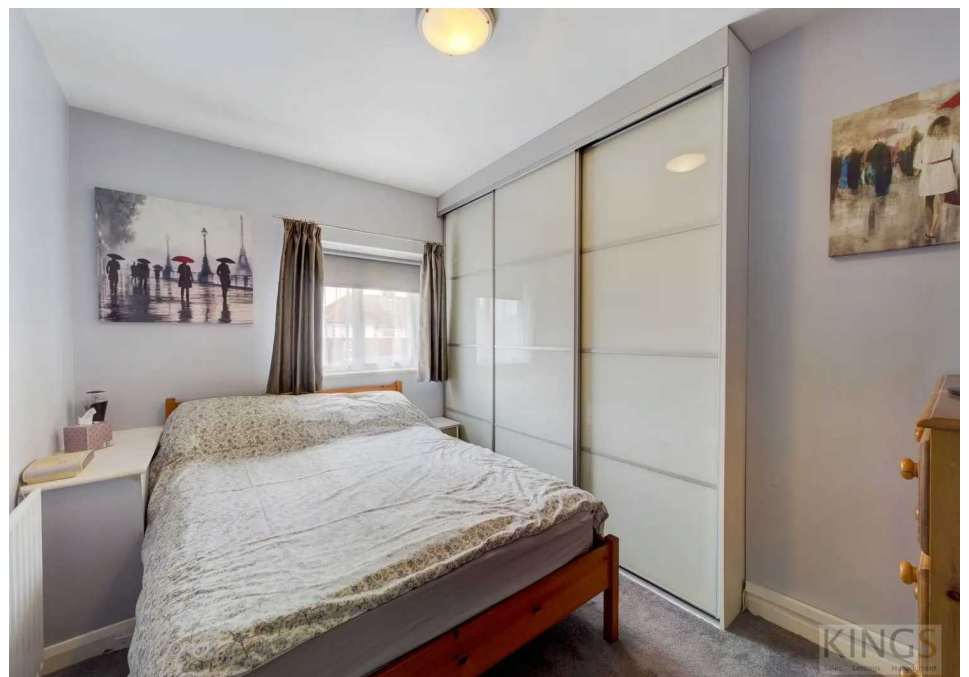
KINGS
Sales Lettings Management

Situated in the desirable area of Birchwood close to many local shops and amenities including Birchwood Primary School and Hatfield Train Station is this well presented three bedroom semi detached house. The ground floor comprises an inviting entrance hall, spacious living room with fireplace, second living room/dining room/snug, modern fitted kitchen with breakfast bar and a utility room with w/c. The first floor features a master bedroom with fitted wardrobes, second double bedroom, third single bedroom and a family bathroom. This freehold property further benefits from a large South-West facing rear garden with patio and laid to lawn areas and a driveway for three cars to the front.



Council Tax band: D

Tenure: Freehold





Ground Floor

Approximate total area⁽¹⁾
933.89 ft²
86.76 m²



Floor 1

(1) Excluding balconies and terraces

While every attempt has been made to ensure accuracy, all measurements are approximate, not to scale. This floor plan is for illustrative purposes only.

GIRAFFE360

