



## 4 Truman House, Park Row, Nottingham, NG1 6GX

- Two Bedroom Apartment
- Private Outside Space
- Allocated Parking Space
- Close to Nottingham City Centre
- Master With En-suite
- Separate Lounge
- • • •





## 4 Truman House, Park Row, Nottingham, NG1 6GX

New to the market a spacious two bedroom flat in the popular Truman House. Truman house is an exceptional building dating back to the 1870's, originally four mansion houses, the building is a fine example of classic Georgian architecture. The property benefits from many original features with the external façade still retained and further enhanced by deep skirting boards, decorative coving recessed lighting. Approx internal area. 1,446 sq ft.

The apartment has wooden flooring through the dining/living space, modern kitchen, carpets in the bedrooms and tiled flooring in the kitchen area. Each bedroom benefits from fitted wardrobes and there is a separate private terrace.

This property is currently tenanted for £1300pcm until Sept 2020.

We have been advised by the current owner of the following:

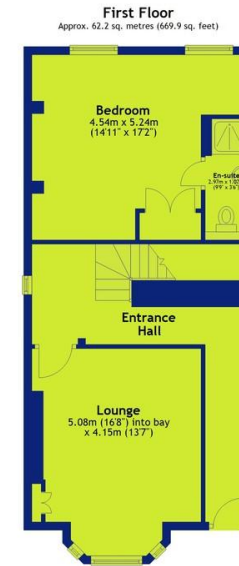
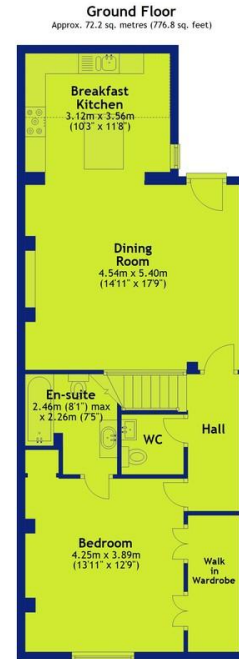
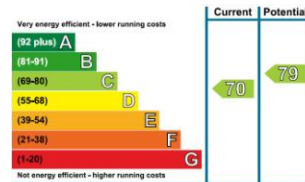
Lease length remaining:

Service charge: £

For more information or to arrange a viewing please contact Rose Simpson or Joe Hargreaves on 0115 8411155.

**Interested? Call: 0115 841 1155**

[www.fhpliving.co.uk](http://www.fhpliving.co.uk)



Total area: approx. 134.4 sq. metres (1446.8 sq. feet)

**Interested? Call 0115 841 1155**

**or click [www.fhpliving.co.uk](http://www.fhpliving.co.uk)**

**23 Bridgford Road | West Bridgford | Nottingham | NG2 6AU**

**1 Weekday Cross | The Lace Market | Nottingham | NG1 2GB**