

Magdala Road

Mapperley Park
Nottingham
NG3 5DF

Guide Price £230,000



Click for further information:-



Location



Gallery



Video



Contact



0115 841 1155



- Desirable Mapperley Park Conservation Area
- Well-presented top floor apartment
- Spacious open-plan lounge/kitchen
- Modern kitchen units & appliances with Central Island unit
- Two double bedrooms both with modern en-suite facilities
- Bright & airy interior
- Off-road parking space
- Easy access to Nottingham city centre with its array of amenities & transport links
- EPC Band C / Council Tax Band C
- Leasehold



0115 841 1155



Location



Gallery



Video



Contact

Magdala Road, [Mapperley Park, Nottingham, NG3 5DF](#)

Key Features

Situated within the sought-after Mapperley Park Conservation Area, this well-presented top floor apartment offers the perfect balance of character and modern living.

Providing easy access to Nottingham's vibrant city centre, with its array of shops, bars, restaurants and excellent transport links, the property is ideally positioned for both professionals and potential investors.

The accommodation is accessed via a communal and private entrance hall and features a spacious 34,3 x 14,9 open-plan lounge/kitchen. The kitchen is fitted with a stylish range of modern units and integrated appliances, complemented by a central island, creating an ideal space for both cooking and entertaining.

There are two well-proportioned bedrooms, each benefiting from modern en-suite facilities, both accessed from the entrance hall.

Outside, the property enjoys the advantage of an off-road parking space and viewing is highly recommended.





0115 841 1155



Location



Gallery



Video



Contact

Magdala Road, Mapperley Park, Nottingham, NG3 5DF



Second Floor

Approx. 100.5 sq. metres (1081.4 sq. feet)



Total area: approx. 100.5 sq. metres (1081.4 sq. feet)



0115 841 1155



Location



Gallery



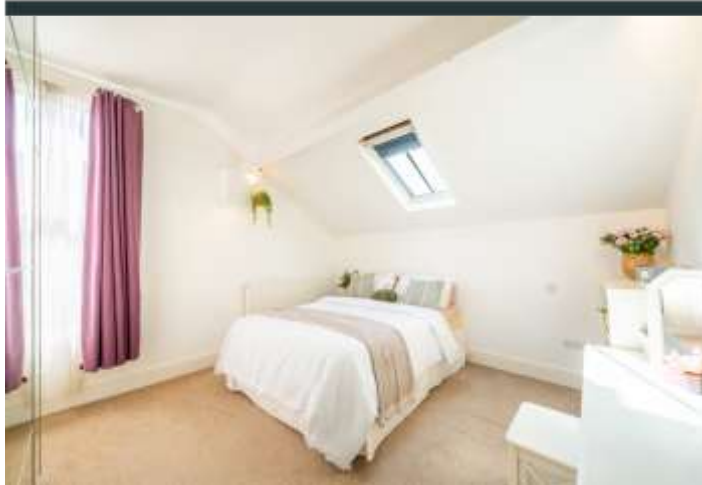
Video



Contact



Magdala Road, Mapperley Park, Nottingham, NG3 5DF



Interested in this home?

Contact the FHP Living Team on 0115 841 1155

23 Bridgford Road
West Bridgford
Nottingham
NG2 6AU

1 Weekday Cross
The Lace Market
Nottingham
NG1 2GB

Score	Energy rating	Current	Potential
92+	A		
81-91	B		
69-80	C	77 C	77 C
55-68	D		
39-54	E		
21-38	F		
1-20	G		

These sales particulars have been prepared by FHP Living on the instruction of the vendor. Services, equipment and fittings mentioned in these particulars have NOT been tested, and as such, no warranties can be given. Prospective purchasers are advised to make their own enquiries regarding such matters. These sales particulars are produced in good faith and are not intended to form part of a contract. Whilst FHP Living have taken care in obtaining internal measurements, they should only be regarded as approximate.

Purchaser information - Under the Protecting Against Money Laundering and the Proceeds of Crime Act 2002, FHP Living require any successful purchasers proceeding with a purchase to provide two forms of identification i.e. passport or photocard driving license and a recent utility bill. This evidence will be required prior to FHP Living instructing solicitors in the purchase or the sale of a property.