

Lenton Road

The Park
Nottingham
NG7 1DU

Offers Over £285,000



Click for further information:-



Location



Gallery



Video



Contact



0115 841 1155



- Located in the prestigious Park Estate,
- Spacious lounge with a large bay window and high ceilings, offering an elegant living environment
- Modern fitted kitchen with integrated appliances and ample storage
- Unique vaulted ceiling study/sitting area perfect as a home office or reading nook
- Finished to a good standard throughout, combining contemporary finishes with original architectural
- Offers over 1,000 sq. ft. of well-designed internal living space.
- Enclosed private terrace ideal for al fresco dining or peaceful outdoor relaxation
- Garage providing off-street parking
- Council Tax Band C/EPC Band D
- Leasehold



0115 841 1155



Location



Gallery



Video



Contact

Lenton Road, The Park, Nottingham, NG7 1DU

Key Features

Situated within the renowned Park Estate-one of Nottingham's most exclusive and historic locations-this beautifully appointed property offers a unique blend of character, comfort, and convenience. Within walking distance of Nottingham Castle, the train station, and the vibrant city centre, it's ideally located for both city living and tranquil retreat.

Boasting over 1,000 sq. ft. of well-designed internal space, the property features a thoughtful layout that combines period charm with modern style.

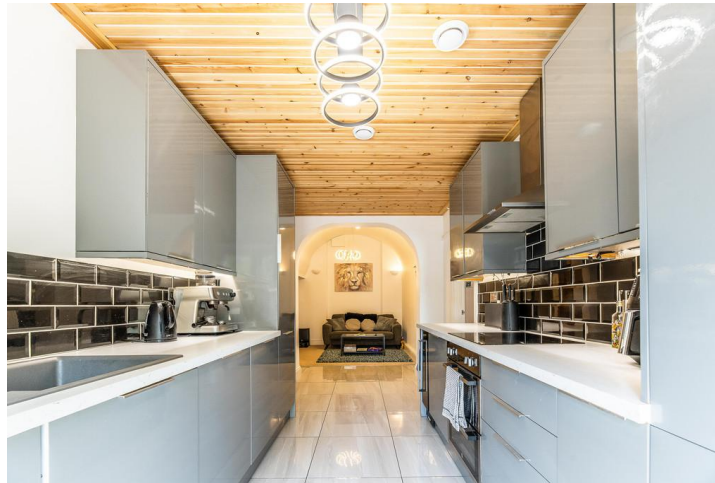
This rare opportunity within The Park offers a superb lifestyle-spacious interiors, secure garage parking, and a location steeped in heritage, all just moments from the heart of Nottingham.

Gated access via Lenton Road leading to an enclosed courtyard with door to the apartment and garage.

A staircase descends to the ground floor living space with access to all rooms.

Lounge with high level ceiling, fireplace and large bay window allowing natural light to flow. A Modern fitted kitchen lies adjacent, offering a range of units and appliances. An Inner hallway allows access to both bedrooms which are filled with natural light.

In addition, there is a stylish vaulted ceiling feature bathroom with modern suite, and a vaulted ceiling study/sitting/reading area which completes the property's living space.





0115 841 1155



Location



Gallery

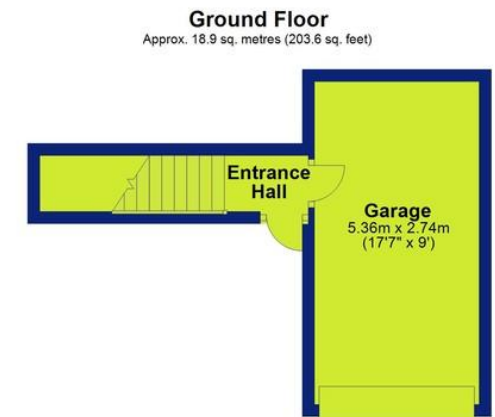


Video



Contact

Lenton Road, The Park, Nottingham, NG7 1DU



Total area: approx. 127.1 sq. metres (1367.8 sq. feet)



0115 841 1155



Location



Gallery



Video



Contact

Lenton Road, The Park, Nottingham, NG7 1DU



Interested in this home?

Contact the FHP Living Team on 0115 841 1155

23 Bridgford Road
West Bridgford
Nottingham
NG2 6AU

1 Weekday Cross
The Lace Market
Nottingham
NG1 2GB

Score	Energy rating	Current	Potential
92+	A		
81-91	B		
69-80	C		79 C
55-68	D	68 D	
39-54	E		
21-38	F		
1-20	G		

These sales particulars have been prepared by FHP Living on the instruction of the vendor. Services, equipment and fittings mentioned in these particulars have NOT been tested, and as such, no warranties can be given. Prospective purchasers are advised to make their own enquiries regarding such matters. These sales particulars are produced in good faith and are not intended to form part of a contract. Whilst FHP Living have taken care in obtaining internal measurements, they should only be regarded as approximate.

Purchaser information - Under the Protecting Against Money Laundering and the Proceeds of Crime Act 2002, FHP Living require any successful purchasers proceeding with a purchase to provide two forms of identification i.e. passport or photocard driving license and a recent utility bill. This evidence will be required prior to FHP Living instructing solicitors in the purchase or the sale of a property.