

Park Heights, The Ropewalk

The Park
Nottingham
NG1 5DT

Guide Price £250,000



Click for further information:-



Location



Gallery



Video



Contact



0115 841 1155



- Period conversion
- Two-bedroom, top floor apartment
- Impressive views
- Modern interior
- Open plan lounge/ kitchen
- Gated parking
- Many features throughout
- Viewing essential!
- Council Tax Band - C
- Tenure - Leasehold



0115 841 1155



Location



Gallery



Video



Contact

The Ropewalk, The Park, Nottingham, NG1 5DT

Key Features

Positioned in an elevated setting adjacent to The Park Estate, one of Nottingham's most exclusive and historic residential areas, within walking distance of Nottingham's vibrant city centre, providing convenient access to shops, dining, cultural attractions, and transport links.

The property itself offers impressive views across The Park estate and beyond and is located on the top-floor, forming part of a period conversion, blending classic architecture with modern interiors.

The open-plan space has been designed for contemporary living with a modern fitted kitchen area offering a range of units, integrated appliances, and luxurious granite work surfaces for a sleek and stylish finish.

The bright and airy lounge area benefits from the elevated position and large windows that enhance natural light.

Two bedrooms are located off the living space, each designed to offer comfort and tranquillity, whilst the stylish shower room has been fitted with modern fixtures, conveniently located adjacent to the bedrooms.

There is also eaves storage, providing practical and discreet additional space.

Outside, there is gated parking for one car offering peace of mind.





0115 841 1155



Location



Gallery



Video



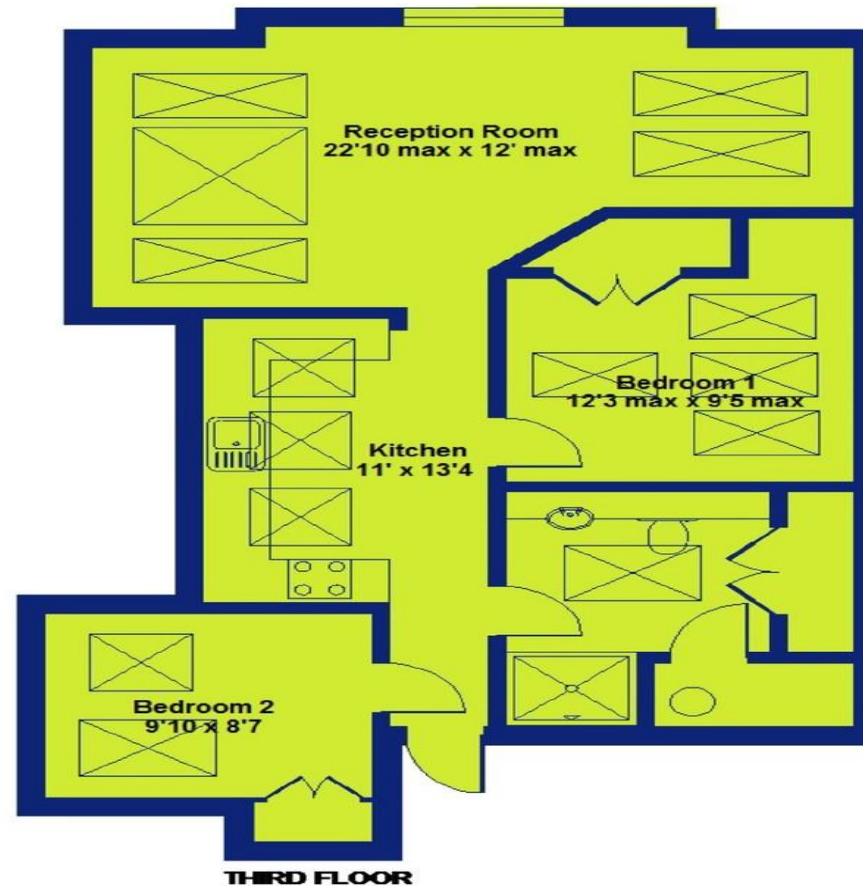
Contact

The Ropewalk, The Park, Nottingham, NG1 5DT



Park Heights , The Ropewalk, Nottingham, NG1 5DT

APPROX. TOTAL GROSS INTERNAL FLOOR AREA 735 SQ FT 68.3 SQ METRES



THIRD FLOOR

Whilst every attempt has been made to ensure the accuracy of the floor plan contained here, measurements of doors, windows and rooms are approximate and no responsibility is taken for any error, omission or misstatement. These plans are for representation purposes only as defined by RICS Code of Measuring Practice and should be used as such by any prospective purchaser. Specifically no guarantee is given on the total square footage of the property if quoted on this plan. Any figure given is for initial guidance only and should not be relied on as a basis of valuation.

Copyright nichecom.co.uk 2014 Produced for FHP REF: 583298



0115 841 1155



Location



Gallery



Video



Contact

The Ropewalk, The Park, Nottingham, NG1 5DT



Interested in this home?

Contact the FHP Living Team on 0115 841 1155

23 Bridgford Road
West Bridgford
Nottingham
NG2 6AU

1 Weekday Cross
The Lace Market
Nottingham
NG1 2GB

Score	Energy rating	Current	Potential
92+	A		
81-91	B		
69-80	C	78 C	79 C
55-68	D		
39-54	E		
21-38	F		
1-20	G		

These sales particulars have been prepared by FHP Living on the instruction of the vendor. Services, equipment and fittings mentioned in these particulars have NOT been tested, and as such, no warranties can be given. Prospective purchasers are advised to make their own enquiries regarding such matters. These sales particulars are produced in good faith and are not intended to form part of a contract. Whilst FHP Living have taken care in obtaining internal measurements, they should only be regarded as approximate.

Purchaser information - Under the Protecting Against Money Laundering and the Proceeds of Crime Act 2002, FHP Living require any successful purchasers proceeding with a purchase to provide two forms of identification i.e. passport or photocard driving license and a recent utility bill. This evidence will be required prior to FHP Living instructing solicitors in the purchase or the sale of a property.